

THE INFORMATION CONTAINED IN THIS DOCUMENT IS PROPRIETARY TO Y-S ELECTRONIC, ANY REPRODUCTION IN PART OR WHOLE WITHOUT PRIOR WRITTEN APPROVAL OR AUTHORIZATION OF Y-S ELECTRONIC IS STRICTLY PROHIBITED.

RoHS COMPLIANT

REVISIONS

REV	ECN NO.	DESCRIPTION	APPROVED BY	DATE

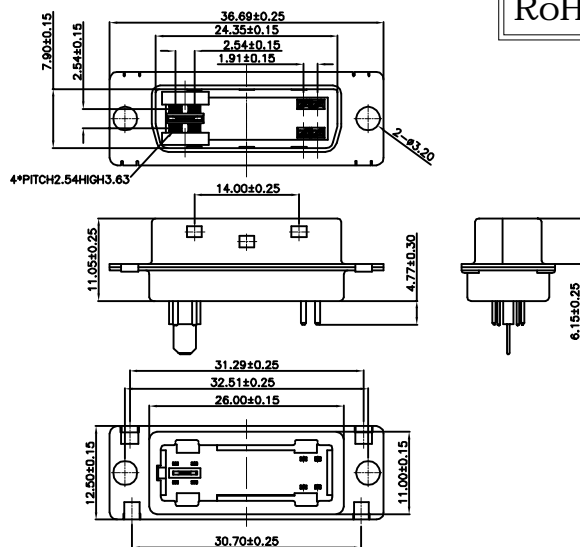
NOTES:

- CONTACT HEIGHT FOR PIN#14 IS .185[4.70]
BALANCE OF CONTACTS .215[5.46]
- ENVIRONMENTAL: TEMPERATURE RANGE -20°C TO +85°C.
- ELECTRICAL:
RATED: 1.5A @ 40V AC (ms)
CONTACT RESISTANCE: 20 MILLIOHMS MAXIMUM
INSULATION RESISTANCE: 1000 MEGOHMS MINIMUM
DIELECTRIC WITHSTANDING VOLTAGE:500V AC (ms)
- MECHANICAL:
MATING FORCE: 10 LB.(4.5KG) MAXIMUM
UNMATING FORCE: 2.2LB.(1KG) MINIMUM,8.8LB.(4KG)MAXIMUM
- MATERIAL:
HOUSING: GLASS FILLED THERMOPLASTIC UL 94V-0
CONTACT: BRASS

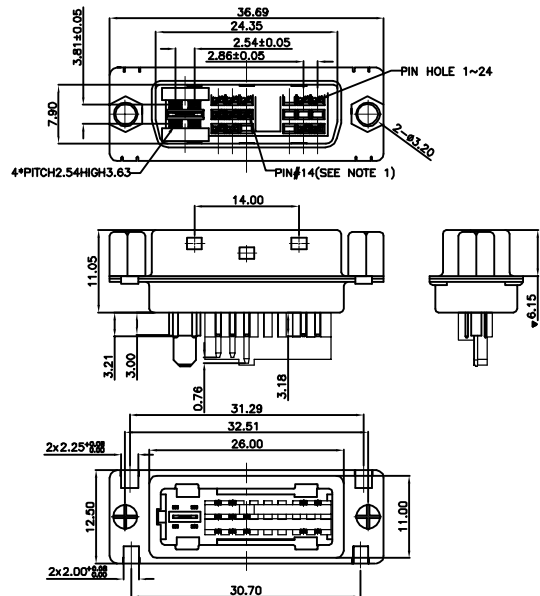
Ordering Information

204 - $\frac{XXX}{a} \frac{X}{b} \frac{X}{c} \frac{X}{d} \frac{X}{e} \frac{X}{f} \frac{X}{g} \frac{X}{h}$

- a. No. Of Pins
240: 24 positions
241: 24 positions + 1
245: 24 positions + 5
181: 18 positions + 1
185: 18 positions + 5
125: 12 positions + 5
045: 4 positions + 5
- b. Contact Type
1: Male
2: Female
c. Contact Direction
1: Straight solder type
2: Right angle type
3: Straight dip type
d. Contact Plating
0: Gold flash selective gold
1: 1u" selective gold on contact
3: 15u" selective gold on contact
4: 30u" selective gold on contact
5: Gold flash full gold
e. Shell Plating
1: Nickel (standard)
2: Tin
3: Gold flash
4: Front gold flash,back tin
5: Nickel(UL & CSA MARK)
6: Tin(UL & CSA MARK)
- f. Insulator Color
1: White
2: Black (standard)
3: White(without envelop)
4: Black (without envelop)
5: Gray
- g. Option Of Clinch Nut
0: Ø3.05mm clear hole
1: Riveted nut(front)
2: Riveted boardlock
3: Riveted nut(Back)
- h. Flange Mounting Option
0: Ø3.05mm clear hole
1: #4-40 threaded hole
2: #4-40 threaded hole with #4-40 unc screwlock installed
3: #4-40 threaded hole with #4-40 unc screwlock bulk-packed



DVI CONNECTOR INTEGRATED DIGITAL/ANALOG 4+5(PLUG)



DVI CONNECTOR INTEGRATED DIGITAL/ANALOG 12+5(PLUG)

DO NOT SCALE DRAWING

DIMENSIONS: □ mm [INCH] □ INCH [mm] ⊠ mm ONLY	CAD GENERATED DRAWING, DO NOT MANUALLY UPDATE DRAWN BY AND DATE JUSTIN XING 06-14-06
UNLESS OTHERWISE SPECIFIED, GENERAL TOLERANCE: DECIMALS X: ±0.38 [0.015] .X: ±0.25 [0.010] .XX: ±0.13 [0.005]	CHECKED BY AND DATE JUSTIN XING 06-14-06 APPROVED BY AND DATE KING CHIU 06-14-06 THIRD ANGLE PROJECTION
MATERIAL	
FINISH	SCALE: 1.5 : 1 SIZE: A3

Y-S ELECTRONIC CO., LTD.
No. 101, Sec. 1, Long-An Street,
Lu-Chu, Taoyuan, Taiwan, R.O.C.
TEL: +886-3-3609819 FAX: +886-3-3609817

TITLE 204 SERIES DVI CONNECTOR MALE	REV A
DRAWING NO. 204-XXX1XXXXXX	FILE NO.
SHEET 1 OF 3	

THE INFORMATION CONTAINED IN THIS DOCUMENT IS PROPRIETARY TO Y-S ELECTRONIC, ANY REPRODUCTION IN PART OR WHOLE WITHOUT PRIOR WRITTEN APPROVAL OR AUTHORIZATION OF Y-S ELECTRONIC IS STRICTLY PROHIBITED.

RoHS COMPLIANT

REVISIONS				
REV	ECN NO.	DESCRIPTION	APPROVED BY	DATE
A				

NOTES:

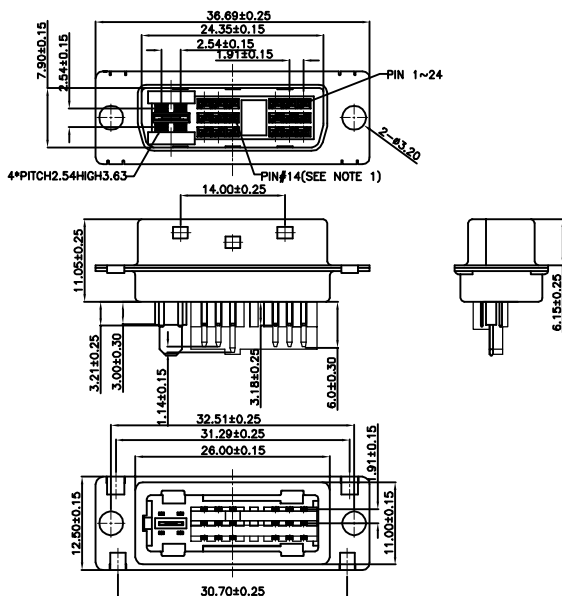
- CONTACT HEIGHT FOR PIN#14 IS .185(.470)
BALANCE OF CONTACTS .215(.546)
- ENVIRONMENTAL: TEMPERATURE RANGE -20°C TO +85°C.
- ELECTRICAL:
RATED: 1.5A @ 40V AC (ms)
CONTACT RESISTANCE: 20 MILLIOHMS MAXIMUM
INSULATION RESISTANCE: 1000 MEGOHMS MINIMUM
DIELECTRIC WITHSTANDING VOLTAGE:500V AC (ms)
- MECHANICAL:
MATING FORCE: 10 L.B.(4.5Kg) MAXIMUM
UNMATING FORCE: 2.2L.B.(1Kg) MINIMUM,8.8L.B.(4Kg)MAXIMUM
- MATERIAL:
HOUSING: GLASS FILLED THERMOPLASTIC UL 94V-0
CONTACT: BRASS

Ordering Information


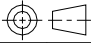
204 - $\frac{XXX}{a} \frac{X}{b} \frac{X}{c} \frac{X}{d} \frac{X}{e} \frac{X}{f} \frac{X}{g} \frac{X}{h}$

- a. No. Of Pins
240: 24 positions
241: 24 positions + 1
245: 24 positions + 5
181: 18 positions + 1
185: 18 positions + 5
125: 12 positions + 5
045: 4 positions + 5
- b. Contact Type
1: Male
2: Female
- c. Contact Direction
1: Straight solder type
2: Right angle type
3: Straight dip type
- d. Contact Plating
0: Gold flash selective gold
1: 1u" selective gold on contact
3: 15u" selective gold on contact
4: 30u" selective gold on contact
5: Gold flash full gold
- e. Shell Plating
1: Nickel (standard)
2: Tin
3: Gold flash
4: Front gold flash,back tin
5: Nickel(UL & CSA MARK)
6: Tin(UL & CSA MARK)
- f. Insulator Color
1: White
2: Black (standard)
3: White(without envelop)
4: Black (without envelop)
5: Gray
- g. Option Of Clinch Nut
0: Ø3.05mm clear hole
1: Riveted nut(front)
2: Riveted boardlock
3: Riveted nut(Back)
- h. Flange Mounting Option
0: Ø3.05mm clear hole
1: #4-40 threaded hole
2: #4-40 threaded hole with #4-40 unc screwlock installed
3: #4-40 threaded hole with #4-40 unc screwlock bulk-packed

DVI CONNECTOR INTEGRATED DIGITAL18+1(PLUG)



DVI CONNECTOR INTEGRATED DIGITAL/ANALOG 18+5(PLUG)

DIMENSIONS: <input type="checkbox"/> MM [INCH] <input type="checkbox"/> INCH [mm] <input checked="" type="checkbox"/> MM ONLY	CAD GENERATED DRAWING, DO NOT MANUALLY UPDATE	 Y-S ELECTRONIC CO., LTD. No. 101, Sec. 1, Long-An Street, Lu-Chu, Taoyuan, Taiwan, R.O.C. TEL: +886-3-3609819 FAX: +886-3-3609817
	UNLESS OTHERWISE SPECIFIED, GENERAL TOLERANCE: DECIMALS X: ±0.38 [0.015] .X: ±0.25 [0.010] .XX: ±0.13 [0.005]	
MATERIAL FINISH	CHECKED BY AND DATE JUSTIN XING 06-14-06	TITLE 204 SERIES DVI CONNECTOR MALE
	APPROVED BY AND DATE KING CHIU 06-14-06	
	THIRD ANGLE PROJECTION 	FILE NO.: SHEET 2 OF 3
	SCALE: 1.5 : 1	SIZE: A3

DO NOT SCALE DRAWING

THE INFORMATION CONTAINED IN THIS DOCUMENT IS PROPRIETARY TO Y-S ELECTRONIC, ANY REPRODUCTION IN PART OR WHOLE WITHOUT PRIOR WRITTEN APPROVAL OR AUTHORIZATION OF Y-S ELECTRONIC IS STRICTLY PROHIBITED.

RoHS COMPLIANT

REVISIONS				
REV	ECN NO.	DESCRIPTION	APPROVED BY	DATE
A				

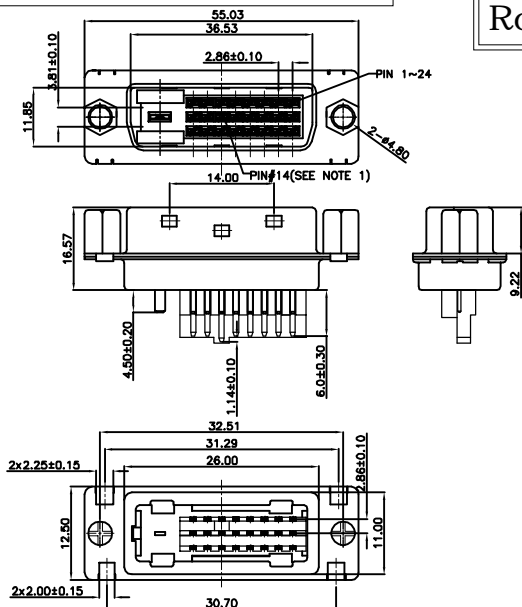
NOTES:

- CONTACT HEIGHT FOR PIN#14 IS .185(4.70)
BALANCE OF CONTACTS .215(5.46)
- ENVIRONMENTAL: TEMPERATURE RANGE -20°C TO +85°C.
- ELECTRICAL:
RATED: 1.5A @ 40V AC (ms)
CONTACT RESISTANCE: 20 MILLIOHMS MAXIMUM
INSULATION RESISTANCE: 1000 MEGOHMS MINIMUM
DIELECTRIC WITHSTANDING VOLTAGE:500V AC (ms)
- MECHANICAL:
MATING FORCE: 10 LB.(4.5Kg) MAXIMUM
UNMATING FORCE: 2.2LB.(1Kg) MINIMUM,8.8LB.(4Kg)MAXIMUM
- MATERIAL:
HOUSING: GLASS FILLED THERMOPLASTIC UL 94V-0
CONTACT: BRASS

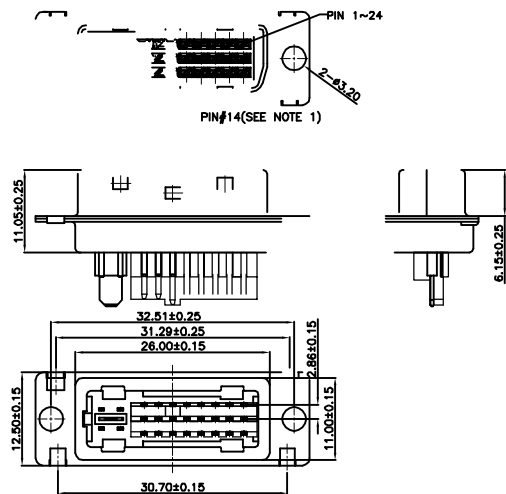
Ordering Information

204 - $\frac{XXX}{a} \frac{X}{b} \frac{X}{c} \frac{X}{d} \frac{X}{e} \frac{X}{f} \frac{X}{g} \frac{X}{h}$

- a. No. Of Pins
240: 24 positions
241: 24 positions + 1
245: 24 positions + 5
181: 18 positions + 1
185: 18 positions + 5
125: 12 positions + 5
045: 4 positions + 5
- b. Contact Type
1: Male
2: Female
- c. Contact Direction
1: Straight solder type
2: Right angle type
3: Straight dip type
- d. Contact Plating
0: Gold flash selective gold
1: 1u" selective gold on contact
3: 15u" selective gold on contact
4: 30u" selective gold on contact
5: Gold flash full gold
- e. Shell Plating
1: Nickel (standard)
2: Tin
3: Gold flash
4: Front gold flash,back tin
5: Nickel(UL & CSA MARK)
6: Tin(UL & CSA MARK)
- f. Insulator Color
1: White
2: Black (standard)
3: White(without envelop)
4: Black (without envelop)
5: Gray
- g. Option Of Clinch Nut
0: Ø3.05mm clear hole
1: Riveted nut(front)
2: Riveted boardlock
3: Riveted nut(Back)
- h. Flange Mounting Option
0: Ø3.05mm clear hole
1: #4-40 threaded hole
2: #4-40 threaded hole with #4-40 unc screwlock installed
3: #4-40 threaded hole with #4-40 unc screwlock bulk-packed


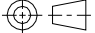


DVI CONNECTOR INTEGRATED DIGITAL 24+1(PLUG)



DVI CONNECTOR INTEGRATED DIGITAL/ANALOG 24+5(PLUG)

DO NOT SCALE DRAWING

DIMENSIONS: <input type="checkbox"/> mm [INCH] <input type="checkbox"/> INCH [mm] <input checked="" type="checkbox"/> mm ONLY	CAD GENERATED DRAWING, DO NOT MANUALLY UPDATE	 Y-S ELECTRONIC CO., LTD. No. 101, Sec. 1, Long-An Street, Lu-Chu, Taoyuan, Taiwan, R.O.C. TEL: +886-3-3609819 FAX: +886-3-3609817
	UNLESS OTHERWISE SPECIFIED, GENERAL TOLERANCE: DECIMALS X: ±0.38 [0.015] .X: ±0.25 [0.010] .XX: ±0.13 [0.005]	
MATERIAL FINISH	CHECKED BY AND DATE JUSTIN XING 06-14-06	TITLE 204 SERIES DVI CONNECTOR MALE
	APPROVED BY AND DATE KING CHIU 06-14-06	
	THIRD ANGLE PROJECTION 	REV A
	SCALE: 1.5 : 1	SIZE: A3
	FILE NO.:	SHEET 3 OF 3

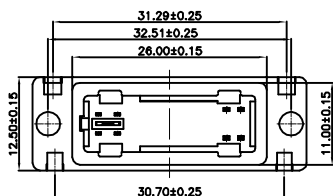
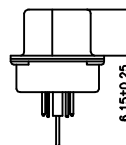
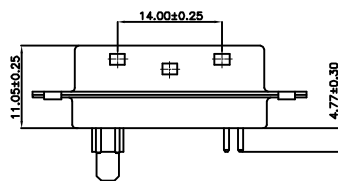
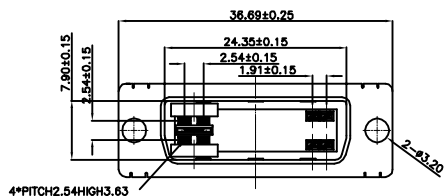
THE INFORMATION CONTAINED IN THIS DOCUMENT IS PROPRIETARY TO Y-S ELECTRONIC, ANY REPRODUCTION IN PART OR WHOLE WITHOUT PRIOR WRITTEN APPROVAL OR AUTHORIZATION OF Y-S ELECTRONIC IS STRICTLY PROHIBITED.

RoHS COMPLIANT

REVISIONS				
REV	ECN NO.	DESCRIPTION	APPROVED BY	DATE
A				

NOTES:

- CONTACT HEIGHT FOR PIN#14 IS .185[4.70]
BALANCE OF CONTACTS .215[5.46]
- ENVIRONMENTAL: TEMPERATURE RANGE -20°C TO +85°C.
- ELECTRICAL:
RATED: 1.5A @ 40V AC (ms)
CONTACT RESISTANCE: 20 MILLIOHMS MAXIMUM
INSULATION RESISTANCE: 1000 MEGOHMS MINIMUM
DIELECTRIC WITHSTANDING VOLTAGE:500V AC (ms)
- MECHANICAL:
MATING FORCE: 10 LB.(4.5Kg) MAXIMUM
UNMATING FORCE: 2.2LB.(1Kg) MINIMUM,8.8LB.(4Kg)MAXIMUM
- MATERIAL:
HOUSING: GLASS FILLED THERMOPLASTIC UL 94V-0
CONTACT: BRASS




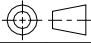
Ordering Information

204 - $\frac{XXX}{a} \frac{X}{b} \frac{X}{c} \frac{X}{d} \frac{X}{e} \frac{X}{f} \frac{X}{g} \frac{X}{h}$

- a. No. Of Pins
 - 240: 24 positions
 - 241: 24 positions + 1
 - 245: 24 positions + 5
 - 181: 18 positions + 1
 - 185: 18 positions + 5
 - 125: 12 positions + 5
 - 045: 4 positions + 5
- b. Contact Type
 - 1: Male
 - 2: Female
- c. Contact Direction
 - 1: Straight solder type
 - 2: Right angle type
 - 3: Straight dip type
- d. Contact Plating
 - 0: Gold flash selective gold
 - 1: 1u" selective gold on contact
 - 3: 15u" selective gold on contact
 - 4: 30u" selective gold on contact
 - 5: Gold flash full gold
- e. Shell Plating
 - 1: Nickel (standard)
 - 2: Tin
 - 3: Gold flash
 - 4: Front gold flash,back tin
 - 5: Nickel(UL & CSA MARK)
 - 6: Tin(UL & CSA MARK)
- f. Insulator Color
 - 1: White
 - 2: Black (standard)
 - 3: White(without envelop)
 - 4: Black (without envelop)
 - 5: Gray
- g. Option Of Clinch Nut
 - 0: Ø3.05mm clear hole
 - 1: Riveted nut(front)
 - 2: Riveted boardlock
 - 3: Riveted nut(Back)
- h. Flange Mounting Option
 - 0: Ø3.05mm clear hole
 - 1: #4-40 threaded hole
 - 2: #4-40 threaded hole with #4-40 unc screwlock installed
 - 3: #4-40 threaded hole with #4-40 unc screwlock bulk-packed

DO NOT SCALE DRAWING

DVI CONNECTOR INTEGRATED DIGITAL/ANALOG 4+5(PHUG)

DIMENSIONS: <input type="checkbox"/> MM [INCH] <input type="checkbox"/> INCH [mm] <input checked="" type="checkbox"/> MM ONLY	CAD GENERATED DRAWING, DO NOT MANUALLY UPDATE	 Y-S ELECTRONIC CO., LTD. No. 101, Sec. 1, Long-An Street, Lu-Chu, Taoyuan, Taiwan, R.O.C. TEL: +886-3-3609819 FAX: +886-3-3609817
	UNLESS OTHERWISE SPECIFIED, GENERAL TOLERANCE: DECIMALS X: ±0.38 [0.015] ANGLES X: ±3° .X ±0.25 [0.010] .X: ±1.0° .XX ±0.13 [0.005]	
MATERIAL	CHECKED BY AND DATE JUSTIN XING 06-14-06	TITLE
FINISH	APPROVED BY AND DATE KING CHIU 06-14-06	204 SERIES DVI CONNECTOR MALE TYPE
	THIRD ANGLE PROJECTION 	DRAWING NO.
	SCALE: 1.5 : 1	204-XXX1XXXXXX
	SIZE: A3	REV A
		FILE NO.: SHEET 1 OF 6

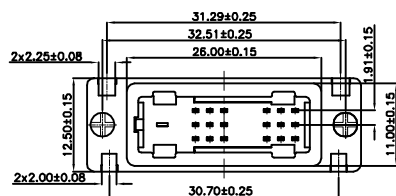
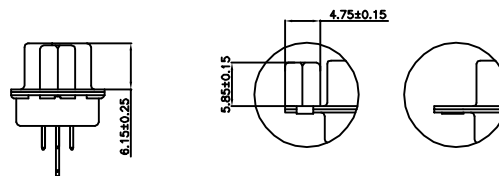
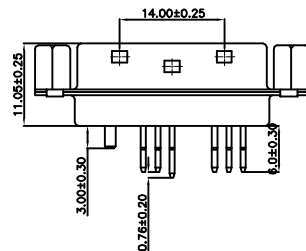
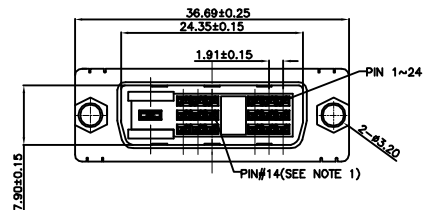
THE INFORMATION CONTAINED IN THIS DOCUMENT IS PROPRIETARY TO Y-S ELECTRONIC, ANY REPRODUCTION IN PART OR WHOLE WITHOUT PRIOR WRITTEN APPROVAL OR AUTHORIZATION OF Y-S ELECTRONIC IS STRICTLY PROHIBITED.

RoHS COMPLIANT

REVISIONS				
REV	ECN NO.	DESCRIPTION	APPROVED BY	DATE
A				

NOTES:

- CONTACT HEIGHT FOR PIN#14 IS .185[4.70]
BALANCE OF CONTACTS .215[5.46]
- ENVIRONMENTAL: TEMPERATURE RANGE -20°C TO +85°C.
- ELECTRICAL:
RATED: 1.5A @ 40V AC (ms)
CONTACT RESISTANCE: 20 MILLIOHMS MAXIMUM
INSULATION RESISTANCE: 1000 MEGOHMS MINIMUM
DIELECTRIC WITHSTANDING VOLTAGE: 500V AC (ms)
- MECHANICAL:
MATING FORCE: 10 LB.(4.5Kg) MAXIMUM
UNMATING FORCE: 2.2LB.(1Kg) MINIMUM, 8.8LB.(4Kg) MAXIMUM
- MATERIAL:
HOUSING: GLASS FILLED THERMOPLASTIC UL 94V-0
CONTACT: BRASS



Ordering Information

204 - $\frac{XXX}{a} \frac{X}{b} \frac{X}{c} \frac{X}{d} \frac{X}{e} \frac{X}{f} \frac{X}{g} \frac{X}{h}$

- a. No. Of Pins
 - 240: 24 positions
 - 241: 24 positions + 1
 - 245: 24 positions + 5
 - 181: 18 positions + 1
 - 185: 18 positions + 5
 - 125: 12 positions + 5
 - 045: 4 positions + 5
- b. Contact Type
 - 1: Male
 - 2: Female
- c. Contact Direction
 - 1: Straight solder type
 - 2: Right angle type
 - 3: Straight dip type
- d. Contact Plating
 - 0: Gold flash selective gold
 - 1: 1u" selective gold on contact
 - 3: 15u" selective gold on contact
 - 4: 30u" selective gold on contact
 - 5: Gold flash full gold
- e. Shell Plating
 - 1: Nickel (standard)
 - 2: Tin
 - 3: Gold flash
 - 4: Front gold flash, back tin
 - 5: Nickel (UL & CSA MARK)
 - 6: Tin (UL & CSA MARK)
- f. Insulator Color
 - 1: White
 - 2: Black (standard)
 - 3: White (without envelop)
 - 4: Black (without envelop)
 - 5: Gray
- g. Option Of Clinch Nut
 - 0: Ø3.05mm clear hole
 - 1: Riveted nut(front)
 - 2: Riveted boardlock
 - 3: Riveted nut(Back)
- h. Flange Mounting Option
 - 0: Ø3.05mm clear hole
 - 1: #4-40 threaded hole
 - 2: #4-40 threaded hole with #4-40 unc screwlock installed
 - 3: #4-40 threaded hole with #4-40 unc screwlock bulk-packed

DO NOT SCALE DRAWING

DVI CONNECTOR INTEGRATED DIGITAL18+1(PLUG)

DIMENSIONS: <input type="checkbox"/> MM [INCH] <input type="checkbox"/> INCH [mm] <input checked="" type="checkbox"/> MM ONLY	CAD GENERATED DRAWING, DO NOT MANUALLY UPDATE	Y-S ELECTRONIC CO., LTD. No. 101, Sec. 1, Long-An Street, Lu-Chu, Taoyuan, Taiwan, R.O.C. TEL: +886-3-3609819 FAX: +886-3-3609817
	UNLESS OTHERWISE SPECIFIED, GENERAL TOLERANCE: DECIMALS X: ±0.38 [0.015] ANGLES X: ±3° .X: ±0.25 [0.010] .X: ±1.0° .XX: ±0.13 [0.005]	
MATERIAL	CHECKED BY AND DATE JUSTIN XING 06-14-06	TITLE
FINISH	APPROVED BY AND DATE KING CHIU 06-14-06	204 SERIES DVI CONNECTOR MALE TYPE
	THIRD ANGLE PROJECTION 	DRAWING NO.
	SCALE: 1.5 : 1 SIZE: A3	204-XXX1XXXXXX
		FILE NO.: SHEET 2 OF 6

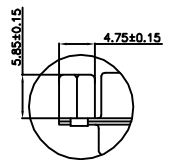
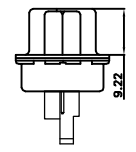
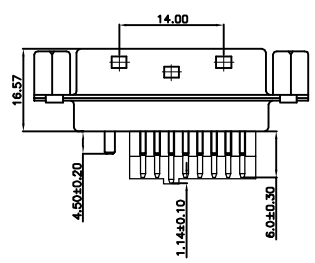
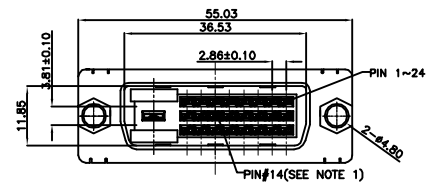
THE INFORMATION CONTAINED IN THIS DOCUMENT IS PROPRIETARY TO Y-S ELECTRONIC, ANY REPRODUCTION IN PART OR WHOLE WITHOUT PRIOR WRITTEN APPROVAL OR AUTHORIZATION OF Y-S ELECTRONIC IS STRICTLY PROHIBITED.

RoHS COMPLIANT

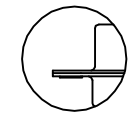
REVISIONS				
REV	ECN NO.	DESCRIPTION	APPROVED BY	DATE
A				

NOTES:

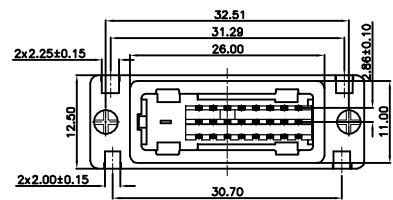
- CONTACT HEIGHT FOR PIN#14 IS .185(.470)
BALANCE OF CONTACTS .215(.546)
- ENVIRONMENTAL: TEMPERATURE RANGE -20°C TO +85°C.
- ELECTRICAL:
RATED: 1.5A @ 40V AC (ms)
CONTACT RESISTANCE: 20 MILLIOHMS MAXIMUM
INSULATION RESISTANCE: 1000 MEGOHMS MINIMUM
DIELECTRIC WITHSTANDING VOLTAGE:500V AC (ms)
- MECHANICAL:
MATING FORCE: 10 LB.(4.5Kg) MAXIMUM
UNMATING FORCE: 2.2LB.(1Kg) MINIMUM,8.8LB.(4Kg)MAXIMUM
- MATERIAL:
HOUSING: GLASS FILLED THERMOPLASTIC UL 94V-0
CONTACT: BRASS



FRONT MOUNTING



STANDARD MOUNTING



Ordering Information

204 - $\frac{XXX}{a} \frac{X}{b} \frac{X}{c} \frac{X}{d} \frac{X}{e} \frac{X}{f} \frac{X}{g} \frac{X}{h}$

- a. No. Of Pins
 - 240: 24 positions
 - 241: 24 positions + 1
 - 245: 24 positions + 5
 - 181: 18 positions + 1
 - 185: 18 positions + 5
 - 125: 12 positions + 5
 - 045: 4 positions + 5
- b. Contact Type
 - 1: Male
 - 2: Female
- c. Contact Direction
 - 1: Straight solder type
 - 2: Right angle type
 - 3: Straight dip type
- d. Contact Plating
 - 0: Gold flash selective gold
 - 1: 1u" selective gold on contact
 - 3: 15u" selective gold on contact
 - 4: 30u" selective gold on contact
 - 5: Gold flash full gold
- e. Shell Plating
 - 1: Nickel (standard)
 - 2: Tin
 - 3: Gold flash
 - 4: Front gold flash,back tin
 - 5: Nickel(UL & CSA MARK)
 - 6: Tin(UL & CSA MARK)
- f. Insulator Color
 - 1: White
 - 2: Black (standard)
 - 3: White(without envelop)
 - 4: Black (without envelop)
 - 5: Gray
- g. Option Of Clinch Nut
 - 0: Ø3.05mm clear hole
 - 1: Riveted nut(front)
 - 2: Riveted boardlock
 - 3: Riveted nut(Back)
- h. Flange Mounting Option
 - 0: Ø3.05mm clear hole
 - 1: #4-40 threaded hole
 - 2: #4-40 threaded hole with #4-40 unc screwlock installed
 - 3: #4-40 threaded hole with #4-40 unc screwlock bulk-packed

DO NOT SCALE DRAWING

DVI CONNECTOR INTEGRATED DIGITAL 24+1(PLUG)

DIMENSIONS: <input type="checkbox"/> mm [INCH] <input type="checkbox"/> INCH [mm] <input checked="" type="checkbox"/> mm ONLY	CAD GENERATED DRAWING, DO NOT MANUALLY UPDATE	Y-S ELECTRONIC CO., LTD. No. 101, Sec. 1, Long-An Street, Lu-Chu, Taoyuan, Taiwan, R.O.C. TEL: +886-3-3609819 FAX: +886-3-3609817	
	UNLESS OTHERWISE SPECIFIED, GENERAL TOLERANCE: DECIMALS X: ±0.38 [0.015] ANGLES X: ±3° .X: ±0.25 [0.010] X: ±1.0° .XX: ±0.13 [0.005]		CHECKED BY AND DATE JUSTIN XING 06-14-06 APPROVED BY AND DATE KING CHIU 06-14-06 THIRD ANGLE PROJECTION
MATERIAL	SCALE: 1.5 : 1 SIZE: A3		DRAWING NO. 204-XXX1XXXXXX REV A
FINISH			FILE NO. SHEET 3 OF 6

THE INFORMATION CONTAINED IN THIS DOCUMENT IS PROPRIETARY TO Y-S ELECTRONIC, ANY REPRODUCTION IN PART OR WHOLE WITHOUT PRIOR WRITTEN APPROVAL OR AUTHORIZATION OF Y-S ELECTRONIC IS STRICTLY PROHIBITED.

RoHS COMPLIANT

REVISIONS				
REV	ECN NO.	DESCRIPTION	APPROVED BY	DATE
A				

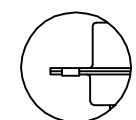
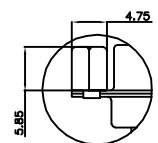
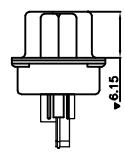
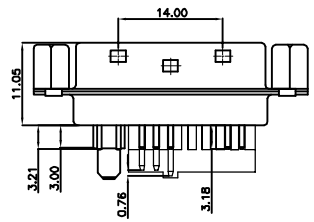
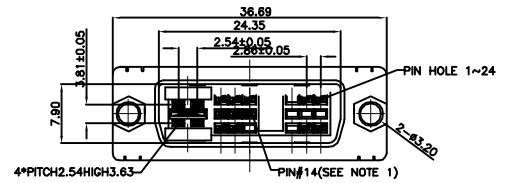
NOTES:

- CONTACT HEIGHT FOR PIN#14 IS .185[4.70]
BALANCE OF CONTACTS .215[5.46]
- ENVIRONMENTAL: TEMPERATURE RANGE -20°C TO +85°C.
- ELECTRICAL:
RATED: 1.5A @ 40V AC (ms)
CONTACT RESISTANCE: 20 MILLIOHMS MAXIMUM
INSULATION RESISTANCE: 1000 MEGOHMS MINIMUM
DIELECTRIC WITHSTANDING VOLTAGE: 500V AC (ms)
- MECHANICAL:
MATING FORCE: 10 LB.(4.5Kg) MAXIMUM
UNMATING FORCE: 2.2LB.(1Kg) MINIMUM, 8.8LB.(4Kg) MAXIMUM
- MATERIAL:
HOUSING: GLASS FILLED THERMOPLASTIC UL 94V-0
CONTACT: BRASS

Ordering Information

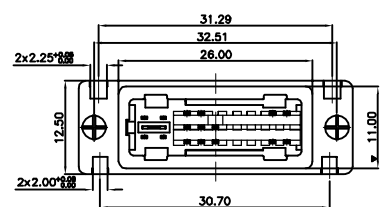
204 - $\frac{XXX}{a} \frac{X}{b} \frac{X}{c} \frac{X}{d} \frac{X}{e} \frac{X}{f} \frac{X}{g} \frac{X}{h}$

- a. No. Of Pins
 - 240: 24 positions
 - 241: 24 positions + 1
 - 245: 24 positions + 5
 - 181: 18 positions + 1
 - 185: 18 positions + 5
 - 125: 12 positions + 5
 - 045: 4 positions + 5
- b. Contact Type
 - 1: Male
 - 2: Female
- c. Contact Direction
 - 1: Straight solder type
 - 2: Right angle type
 - 3: Straight dip type
- d. Contact Plating
 - 0: Gold flash selective gold
 - 1: 1u" selective gold on contact
 - 3: 15u" selective gold on contact
 - 4: 30u" selective gold on contact
 - 5: Gold flash full gold
- e. Shell Plating
 - 1: Nickel (standard)
 - 2: Tin
 - 3: Gold flash
 - 4: Front gold flash back tin
 - 5: Nickel (UL & CSA MARK)
 - 6: Tin (UL & CSA MARK)
- f. Insulator Color
 - 1: White
 - 2: Black (standard)
 - 3: White (without envelop)
 - 4: Black (without envelop)
 - 5: Gray
- g. Option Of Clinch Nut
 - 0: Ø3.05mm clear hole
 - 1: Riveted nut(front)
 - 2: Riveted boardlock
 - 3: Riveted nut(Back)
- h. Flange Mounting Option
 - 0: Ø3.05mm clear hole
 - 1: #4-40 threaded hole
 - 2: #4-40 threaded hole with #4-40 unc screwlock installed
 - 3: #4-40 threaded hole with #4-40 unc screwlock bulk-packed



FRONT MOUNTING

STANDARD MOUNTING



DVI CONNECTOR INTEGRATED DIGITAL/ANALOG 12+5(PLUG)

DO NOT SCALE DRAWING

DIMENSIONS: <input type="checkbox"/> MM [INCH] <input type="checkbox"/> INCH [mm] <input checked="" type="checkbox"/> MM ONLY	CAD GENERATED DRAWING, DO NOT MANUALLY UPDATE	Y-S ELECTRONIC CO., LTD. No. 101, Sec. 1, Long-An Street, Lu-Chu, Taoyuan, Taiwan, R.O.C. TEL: +886-3-3609819 FAX: +886-3-3609817	
	UNLESS OTHERWISE SPECIFIED, GENERAL TOLERANCE: DECIMALS ANGLES X: ±0.38 [0.015] X*: ±3° .X: ±0.25 [0.010] .X*: ±1.0° .XX: ±0.13 [0.005]		DRAWN BY AND DATE JUSTIN XING 06-14-06 CHECKED BY AND DATE JUSTIN XING 06-14-06 APPROVED BY AND DATE KING CHIU 06-14-06 THIRD ANGLE PROJECTION
MATERIAL		DRAWING NO.	REV
FINISH		SCALE: 1.5 : 1 SIZE: A3	204-XXX1XXXXXX
FILE NO.:		SHEET 4 OF 6	

THE INFORMATION CONTAINED IN THIS DOCUMENT IS PROPRIETARY TO Y-S ELECTRONIC, ANY REPRODUCTION IN PART OR WHOLE WITHOUT PRIOR WRITTEN APPROVAL OR AUTHORIZATION OF Y-S ELECTRONIC IS STRICTLY PROHIBITED.

RoHS COMPLIANT

REVISIONS				
REV	ECN NO.	DESCRIPTION	APPROVED BY	DATE
A				

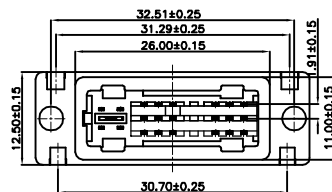
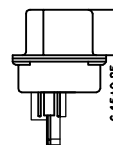
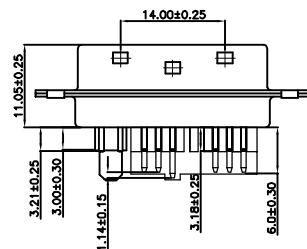
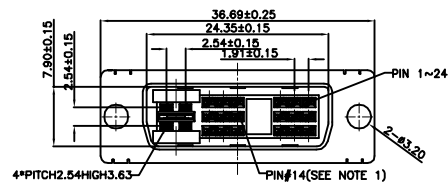
NOTES:

- CONTACT HEIGHT FOR PIN#14 IS .185[4.70]
BALANCE OF CONTACTS .215[5.46]
- ENVIRONMENTAL: TEMPERATURE RANGE -20°C TO +85°C.
- ELECTRICAL:
RATED: 1.5A @ 40V AC (ms)
CONTACT RESISTANCE: 20 MILLIOHMS MAXIMUM
INSULATION RESISTANCE: 1000 MEGOHMS MINIMUM
DIELECTRIC WITHSTANDING VOLTAGE:500V AC (ms)
- MECHANICAL:
MATING FORCE: 10 LB.(4.5Kg) MAXIMUM
UNMATING FORCE: 2.2LB.(1Kg) MINIMUM,8.8LB.(4Kg)MAXIMUM
- MATERIAL:
HOUSING: GLASS FILLED THERMOPLASTIC UL 94V-0
CONTACT: BRASS

Ordering Information

204 - $\frac{XXX}{a} \frac{X}{b} \frac{X}{c} \frac{X}{d} \frac{X}{e} \frac{X}{f} \frac{X}{g} \frac{X}{h}$

- a. No. Of Pins
240: 24 positions
241: 24 positions + 1
245: 24 positions + 5
181: 18 positions + 1
185: 18 positions + 5
125: 12 positions + 5
045: 4 positions + 5
- b. Contact Type
1: Male
2: Female
- c. Contact Direction
1: Straight solder type
2: Right angle type
3: Straight dip type
- d. Contact Plating
0: Gold flash selective gold
1: 1u" selective gold on contact
3: 15u" selective gold on contact
4: 30u" selective gold on contact
5: Gold flash full gold
- e. Shell Plating
1: Nickel (standard)
2: Tin
3: Gold flash
4: Front gold flash,back tin
5: Nickel(UL & CSA MARK)
6: Tin(UL & CSA MARK)
- f. Insulator Color
1: White
2: Black (standard)
3: White(without envelop)
4: Black (without envelop)
5: Gray
- g. Option Of Clinch Nut
0: Ø3.05mm clear hole
1: Riveted nut(front)
2: Riveted boattlock
3: Riveted nut(Back)
- h. Flange Mounting Option
0: Ø3.05mm clear hole
1: #4-40 threaded hole
2: #4-40 threaded hole with #4-40 unc screwlock installed
3: #4-40 threaded hole with #4-40 unc screwlock bulk-packed



DVI CONNECTOR INTEGRATED DIGITAL/ANALOG 18+5(PHUG)

DO NOT SCALE DRAWING

DIMENSIONS: <input type="checkbox"/> MM [INCH] <input type="checkbox"/> INCH [mm] <input checked="" type="checkbox"/> MM ONLY	CAD GENERATED DRAWING, DO NOT MANUALLY UPDATE	Y-S ELECTRONIC CO., LTD. No. 101, Sec. 1, Long-An Street, Lu-Chu, Taoyuan, Taiwan, R.O.C. TEL: +886-3-3609819 FAX: +886-3-3609817	
	UNLESS OTHERWISE SPECIFIED, GENERAL TOLERANCE: DECIMALS X: ±0.38 [0.015] ANGLES .X: ±0.25 [0.010] X: ±3° .XX: ±0.13 [0.005] .X: ±1.0°		DRAWN BY AND DATE JUSTIN XING 06-14-06 CHECKED BY AND DATE JUSTIN XING 06-14-06 APPROVED BY AND DATE KING CHIU 06-14-06 THIRD ANGLE PROJECTION
MATERIAL		DRAWING NO. 204-XXX1XXXXXX	REV A
FINISH	SCALE: 1.5 : 1	SIZE: A3	FILE NO.: SHEET 5 OF 6

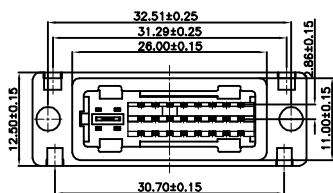
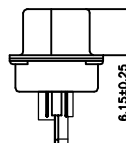
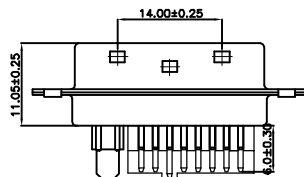
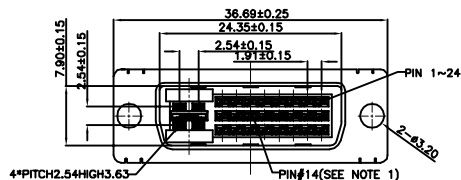
THE INFORMATION CONTAINED IN THIS DOCUMENT IS PROPRIETARY TO Y-S ELECTRONIC, ANY REPRODUCTION IN PART OR WHOLE WITHOUT PRIOR WRITTEN APPROVAL OR AUTHORIZATION OF Y-S ELECTRONIC IS STRICTLY PROHIBITED.

RoHS COMPLIANT

REVISIONS				
REV	ECN NO.	DESCRIPTION	APPROVED BY	DATE
A				

NOTES:

- CONTACT HEIGHT FOR PIN#14 IS .185[4.70]
BALANCE OF CONTACTS .215[5.46]
- ENVIRONMENTAL: TEMPERATURE RANGE -20°C TO +85°C.
- ELECTRICAL:
RATED: 1.5A @ 40V AC (ms)
CONTACT RESISTANCE: 20 MILLIOHMS MAXIMUM
INSULATION RESISTANCE: 1000 MEGOHMS MINIMUM
DIELECTRIC WITHSTANDING VOLTAGE:500V AC (ms)
- MECHANICAL:
MATING FORCE: 10 LB.(4.5Kg) MAXIMUM
UNMATING FORCE: 2.2LB.(1Kg) MINIMUM,8.8LB.(4Kg)MAXIMUM
- MATERIAL:
HOUSING: GLASS FILLED THERMOPLASTIC UL 94V-0
CONTACT: BRASS




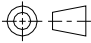
Ordering Information

204 - $\frac{XXX}{a} \frac{X}{b} \frac{X}{c} \frac{X}{d} \frac{X}{e} \frac{X}{f} \frac{X}{g} \frac{X}{h}$

- a. No. Of Pins
 - 240: 24 positions
 - 241: 24 positions + 1
 - 245: 24 positions + 5
 - 181: 18 positions + 1
 - 185: 18 positions + 5
 - 125: 12 positions + 5
 - 045: 4 positions + 5
- b. Contact Type
 - 1: Male
 - 2: Female
- c. Contact Direction
 - 1: Straight solder type
 - 2: Right angle type
 - 3: Straight dip type
- d. Contact Plating
 - 0: Gold flash selective gold
 - 1: 1u" selective gold on contact
 - 3: 15u" selective gold on contact
 - 4: 30u" selective gold on contact
 - 5: Gold flash full gold
- e. Shell Plating
 - 1: Nickel (standard)
 - 2: Tin
 - 3: Gold flash
 - 4: Front gold flash,back tin
 - 5: Nickel(UL & CSA MARK)
 - 6: Tin(UL & CSA MARK)
- f. Insulator Color
 - 1: White
 - 2: Black (standard)
 - 3: White(without envelop)
 - 4: Black (without envelop)
 - 5: Gray
- g. Option Of Clinch Nut
 - 0: Ø3.05mm clear hole
 - 1: Riveted nut(front)
 - 2: Riveted boardlock
 - 3: Riveted nut(Back)
- h. Flange Mounting Option
 - 0: Ø3.05mm clear hole
 - 1: #4-40 threaded hole
 - 2: #4-40 threaded hole with #4-40 unc screwlock installed
 - 3: #4-40 threaded hole with #4-40 unc screwlock bulk-packed

DO NOT SCALE DRAWING

DVI CONNECTOR INTEGRATED DIGITAL/ANALOG 24+5(PUG)

DIMENSIONS: <input type="checkbox"/> MM [INCH] <input type="checkbox"/> INCH [mm] <input checked="" type="checkbox"/> MM ONLY	CAD GENERATED DRAWING, DO NOT MANUALLY UPDATE	 Y-S ELECTRONIC CO., LTD. No. 101, Sec. 1, Long-An Street, Lu-Chu, Taoyuan, Taiwan, R.O.C. TEL: +886-3-3609819 FAX: +886-3-3609817
	UNLESS OTHERWISE SPECIFIED, GENERAL TOLERANCE: DECIMALS X: ±0.38 [0.015] ANGLES X: ±3° .X: ±0.25 [0.010] .X: ±1.0° .XX: ±0.13 [0.005]	
MATERIAL	CHECKED BY AND DATE JUSTIN XING 06-14-06	TITLE
FINISH	APPROVED BY AND DATE KING CHIU 06-14-06	204 SERIES DVI CONNECTOR MALE TYPE
	THIRD ANGLE PROJECTION 	DRAWING NO.
	SCALE: 1.5 : 1	204-XXX1XXXXXX
	SIZE: A3	REV A
		FILE NO.: SHEET 6 OF 6

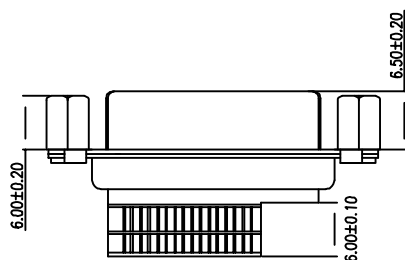
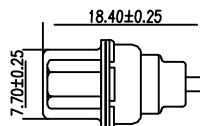
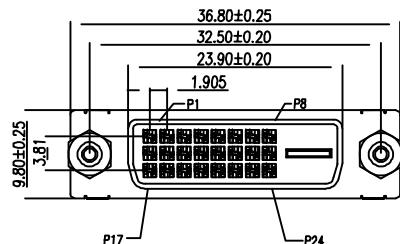
THE INFORMATION CONTAINED IN THIS DOCUMENT IS PROPRIETARY TO Y-S ELECTRONIC, ANY REPRODUCTION IN PART OR WHOLE WITHOUT PRIOR WRITTEN APPROVAL OR AUTHORIZATION OF Y-S ELECTRONIC IS STRICTLY PROHIBITED.

RoHS COMPLIANT

REVISIONS				
REV	ECN NO.	DESCRIPTION	APPROVED BY	DATE

NOTES:

- CONTACT HEIGHT FOR PIN#14 IS .185[4.70]
BALANCE OF CONTACTS .215[5.46]
- ENVIRONMENTAL: TEMPERATURE RANGE -20°C TO +85°C.
- ELECTRICAL:
RATED: 1.5A @ 40V AC (ms)
CONTACT RESISTANCE: 20 MILLIOHMS MAXIMUM
INSULATION RESISTANCE: 1000 MEGOHMS MINIMUM
DIELECTRIC WITHSTANDING VOLTAGE:500V AC (ms)
- MATERIAL:
HOUSING: GLASS FILLED THERMOPLASTIC UL 94V-0
CONTACT: PHOSPOR BRONZE




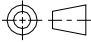
Ordering Information

204 - $\frac{XXX}{a} \frac{X}{b} \frac{X}{c} \frac{X}{d} \frac{X}{e} \frac{X}{f} \frac{X}{g} \frac{X}{h}$

- a. No. Of Pins
240: 24 positions
241: 24 positions + 1
245: 24 positions + 5
181: 18 positions + 1
185: 18 positions + 5
125: 12 positions + 5
045: 4 positions + 5
- b. Contact Type
1: Male
2: Female
- c. Contact Direction
1: Straight solder type
2: Right angle type
3: Straight dip type
- d. Contact Plating
0: Gold flash selective gold
1: 1u" selective gold on contact
3: 15u" selective gold on contact
4: 30u" selective gold on contact
5: Gold flash full gold
- e. Shell Plating
1: Nickel (standard)
2: Tin
3: Gold flash
4: Front gold flash,back tin
5: Nickel(UL & CSA MARK)
6: Tin(UL & CSA MARK)
- f. Insulator Color
1: White
2: Black (standard)
3: White(without envelop)
4: Black (without envelop)
5: Gray
- g. Option Of Clinch Nut
0: Ø3.05mm clear hole
1: Riveted nut(front)
2: Riveted boardlock
3: Riveted nut(Back)
- h. Flange Mounting Option
0: Ø3.05mm clear hole
1: #4-40 threaded hole
2: #4-40 threaded hole with #4-40 unc screwlock installed
3: #4-40 threaded hole with #4-40 unc screwlock bulk-packed

DVI CONNECTOR FEMALE 24+1(PLUG) SOLDER TYPE

DO NOT SCALE DRAWING

DIMENSIONS: <input type="checkbox"/> mm [INCH] <input type="checkbox"/> INCH [mm] <input checked="" type="checkbox"/> mm ONLY	CAD GENERATED DRAWING, DO NOT MANUALLY UPDATE	 Y-S ELECTRONIC CO., LTD. No. 101, Sec. 1, Long-An Street, Lu-Chu, Taoyuan, Taiwan, R.O.C. TEL: +886-3-3609819 FAX: +886-3-3609817	
	UNLESS OTHERWISE SPECIFIED, GENERAL TOLERANCE: DECIMALS X: ±0.38 [0.015] ANGLES X: ±3° .X ±0.25 [0.010] .X: ±1.0° .XX ±0.13 [0.005]		CHECKED BY AND DATE JUSTIN XING 06-14-06
MATERIAL	APPROVED BY AND DATE KING CHIU 06-14-06	DRAWING NO. 204-2412XXXXXX	REV A
FINISH	THIRD ANGLE PROJECTION 	FILE NO.:	SHEET 6 OF 6
SCALE: 1.5 : 1	SIZE: A3	SHEET 6 OF 6	