

THE INFORMATION CONTAINED IN THIS DOCUMENT IS PROPRIETARY TO Y-S ELECTRONIC, ANY REPRODUCTION IN PART OR WHOLE WITHOUT PRIOR WRITTEN APPROVAL OR AUTHORIZATION OF Y-S ELECTRONIC IS STRICTLY PROHIBITED.

RoHS COMPLIANT

| REVISIONS | | | | |
|-----------|---------|-------------|-------------|------|
| REV | ECN NO. | DESCRIPTION | APPROVED BY | DATE |
| B | | | | |

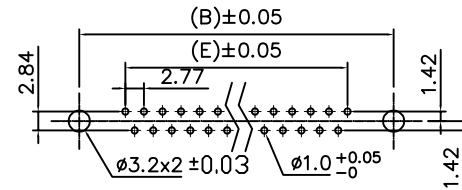
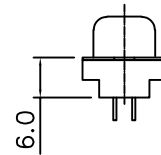
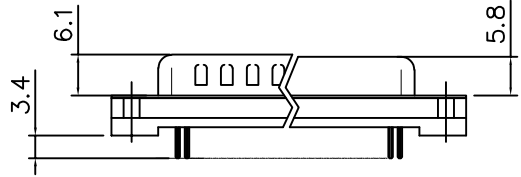
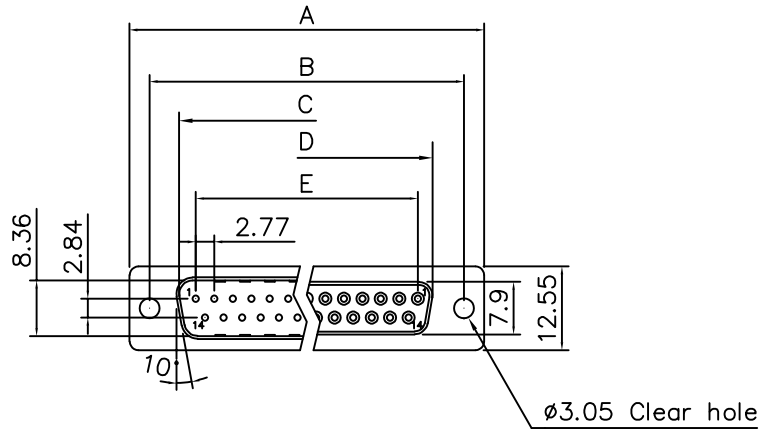
Product Specification

Material

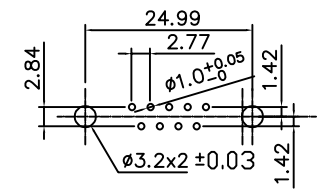
Insulator :Glass-Filled Thermoplastic PBT,UL94V-0 rated
 Contact :Brass
 Shell : Steel, 60u" Nickel Over 50u" min Copper
 Clinch Nut : Brass, Nickel Plated
 Boardlock : Brass, Tin Plated
 Screwlock : Steel, Nickel Plated

Electrical

Contact Resistance :20 milliohms
 Insulation Resistance :1000 megohms at 500 VDC
 Dielectric Withstanding Voltage :
 1000 VAC/rms 60Hz for 1 minute
 Current Rating :3 AMP
 Volatge Rating :250 VAC/rms 60Hz
 Operation Temperature : -25°C to +85°C




Recomended PCB Layout
9~37PIN



Recomended PCB Layout
9PIN

Dimensions

| Positions | A | B | C | D | E |
|-----------|-------|-------|-------|-------|-------|
| 9 | 30.81 | 24.99 | 16.92 | 16.33 | 11.08 |
| 15 | 39.20 | 33.30 | 25.25 | 24.70 | 19.39 |
| 25 | 53.05 | 47.04 | 38.96 | 38.40 | 33.24 |
| 37 | 69.40 | 63.50 | 55.42 | 54.80 | 49.86 |

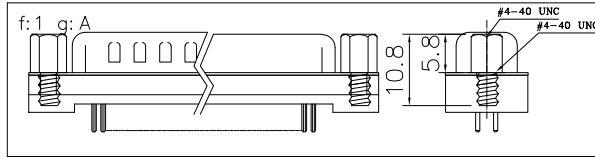
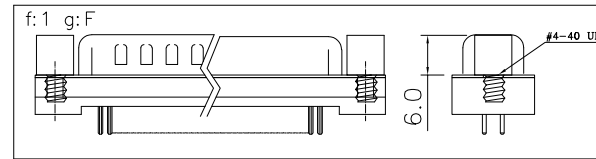
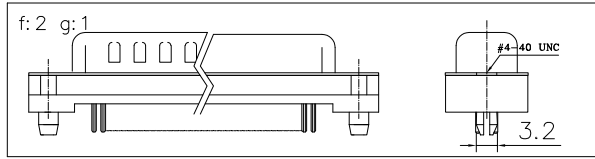
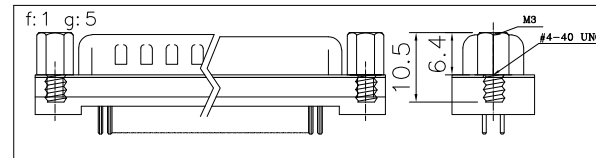
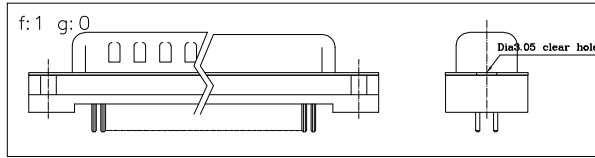
| | | | | |
|--|---|---|---|---|
| DIMENSIONS: <input type="checkbox"/> mm [INCH] <input type="checkbox"/> INCH [mm] <input checked="" type="checkbox"/> mm ONLY | CAD GENERATED DRAWING, DO NOT MANUALLY UPDATE DRAWN BY AND DATE JUSTIN XING 05-26-06 |  Y-S ELECTRONIC CO., LTD. No. 101, Sec. 1, Long-An Street, Lu-Chu, Taoyuan, Taiwan, R.O.C. TEL: +886-3-3609819 FAX: +886-3-3609817 | | |
| | UNLESS OTHERWISE SPECIFIED, GENERAL TOLERANCE: DECIMALS ANGLES .X ±0.38 [0.015] X° ±3° .XX ±0.25 [0.010] .X° ±1.0° .XXX ±0.13 [0.005] | | CHECKED BY AND DATE JUSTIN XING 05-26-06 APPROVED BY AND DATE KING CHIU 05-26-06 THIRD ANGLE PROJECTION | TITLE 192 SERIES D-SUB STRAIGHT TYPE W/O METAL REAR SHELL |
| MATERIAL FINISH | SCALE: 1 : 1 | SIZE: A3 | DRAWING NO. 192-XXXXXXXX | REV B |
| FILE NO.: | | SHEET 1 OF 3 | | |

DO NOT SCALE DRAWING

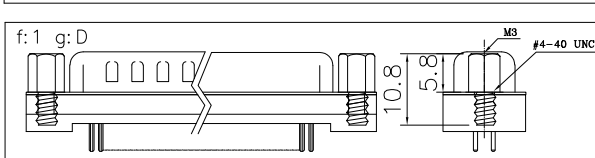
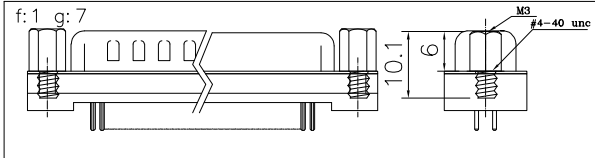
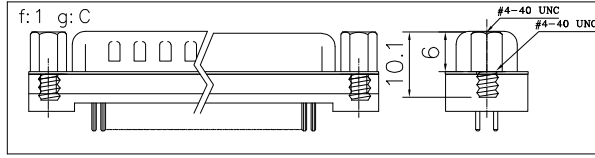
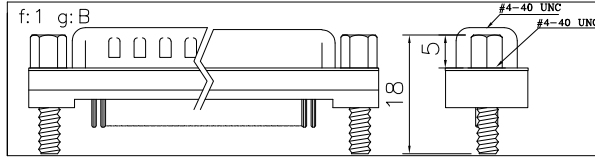
THE INFORMATION CONTAINED IN THIS DOCUMENT IS PROPRIETARY TO Y-S ELECTRONIC, ANY REPRODUCTION IN PART OR WHOLE WITHOUT PRIOR WRITTEN APPROVAL OR AUTHORIZATION OF Y-S ELECTRONIC IS STRICTLY PROHIBITED.

RoHS COMPLIANT

| REVISIONS | | | | |
|-----------|---------|-------------|-------------|------|
| REV | ECN NO. | DESCRIPTION | APPROVED BY | DATE |
| | | | | |



CONSULT SALES OR
FACTORY FOR OTHER
MOUNTING STYLE OPTIONS



| | |
|--|------------------------------------|
| DIMENSIONS: | |
| <input type="checkbox"/> mm [INCH] | <input type="checkbox"/> INCH [mm] |
| <input checked="" type="checkbox"/> mm ONLY | |
| UNLESS OTHERWISE SPECIFIED, GENERAL TOLERANCE: | |
| DECIMALS | ANGLES |
| .X ±0.38 [0.015] | X° ±3° |
| .X ±0.25 [0.010] | .X° ±1.0° |
| .XX ±0.13 [0.005] | |
| MATERIAL | |
| FINISH | |

| | |
|---|----------|
| CAD GENERATED DRAWING, DO NOT MANUALLY UPDATE | |
| DRAWN BY AND DATE JUSTIN XING 05-26-06 | |
| CHECKED BY AND DATE JUSTIN XING 05-26-06 | |
| APPROVED BY AND DATE KING CHIU 05-26-06 | |
| THIRD ANGLE PROJECTION | |
| | |
| SCALE: 1:1 | SIZE: A3 |

| | | |
|-------------|--|--|
| | Y-S ELECTRONIC CO., LTD. | |
| | No. 101, Sec. 1, Long-An Street, Lu-Chu, Taoyuan, Taiwan, R.O.C. TEL: +886-3-3609819 FAX: +886-3-3609817 | |
| TITLE | 192 SERIES D-SUB DIP STRAIGHT TYPE HIGH PROFILE | |
| DRAWING NO. | 192-XXXXXXXX | |
| FILE NO.: | SHEET 3 OF 3 | |

DO NOT SCALE DRAWING

1 2 3 4 5 6 7 8

THE INFORMATION CONTAINED IN THIS DOCUMENT IS PROPRIETARY TO Y-S ELECTRONIC, ANY REPRODUCTION IN PART OR WHOLE WITHOUT PRIOR WRITTEN APPROVAL OR AUTHORIZATION OF Y-S ELECTRONIC IS STRICTLY PROHIBITED.

RoHS COMPLIANT


| REVISIONS | | | | |
|-----------|---------|-------------|-------------|------|
| REV | ECN NO. | DESCRIPTION | APPROVED BY | DATE |
| | | | | |

Ordering Information

192 - $\frac{XX}{a} \frac{XX}{b} \frac{X}{c} \frac{X}{d} \frac{X}{e} \frac{X}{f} \frac{X}{g}$

- a. No. Of Contacts:
 09: 09 positions
 15: 15 positions
 25: 25 positions
 37: 37 positions
- b. Contact Type
 1: Male(3.4mm) 3: Male(3.7mm)
 2: Female(3.4mm) 4: Female(3.7mm)
- c. Contact Plating
 0: Gold flash selective gold
 1:15u" selective gold on contact
 2:30u" selective gold on contact
 3: G/F Matte pure tin
- d.Shell plating :
 0.Cr⁺³ yellow chrome
 1.Nickel(standard)
 2.Tin
 3.Cr⁺⁶yellow chrome
 4.Gold flash
 5.Special tin
 6.Tin tab shell,
 7.Tin , ul logo
 8.Nickel , ul&csa logo
- e.Insulator Color
 1:Black
 2:Black(high temperature)
- f.Riveting Options :
 1.Nut rivet:4.5*2.9*6.0mm
 2.Standoff+2 prong boardlockØ3.2
 3.Standoff+2 prong boardlockØ3.0
 4.Standoff+2 prong boardlockØ3.1
- 5.Front rivet round nut,6.0mm
 6.Standoff+4 prong boardlockØ3.15(quadrangle)
 7.Standoff+2 prong boardlockØ3.15(quadrangle)
 8.Front rivet round nut,6.9mm
 9.Front rivet round nut,6.5mm
 A.Standoff+4 prong boardlockØ3.25(quadrangle)
 B.Standoff+4 prong boardlockØ3.20(hexagon)
 C.Standoff+4prong boardlock & Six rivet type(Six shape)
 D.Standoff+4prong boardlock & Six rivet type(Four shape)(3.25~3.30mm)
 E.Standoff+4prong boardlock & Six rivet type(Four shape)(3.15~3.20mm)
 F.Front rivet six nut,5.8mm
- g.Flange Mounting Option :
 0:Ø3.05mm clear hole
 1:#4-40 threaded hole
 2:#4-40 threaded hole with #4-40 unc(6.4*10.5mm)screwlock installed
 3:#4-40 threaded hole with #4-40 unc(6.4*10.5mm)screwlock buld-packed
 4:M3 threaded hole
 5:#4-40 threaded hole with M3(6.4*10.5mm)screwlock installed
 6:#4-40 threaded hole with M3(6.4*10.5mm)screwlock buld-packed
 7:#4-40 threaded hole with M3(6.0*10.1mm)screwlock installed
 8:#4-40 threaded hole with #4-40 unc(5.0*9.0mm) round "-" font screwlock installed
 9:#4-40 threaded hole with #4-40 unc(5.8*10.0mm)screwlock installed
 A:#4-40 threaded hole with #4-40 unc(5.8*10.8mm)screwlock installed
 B:#4-40 threaded hole with #4-40 unc(5.0*18.0mm)screwlock installed
 C:#4-40 threaded hole with #4-40 unc(6.0*10.1mm)screwlock installed
 D:#4-40 threaded hole with M3(5.8*10.0mm)screwlock installed
 E:#4-40 threaded hole with #4-40 unc(6.0*10.1mm)single(anigh #1pin)screwlock installed
 F:#4-40 threaded hole with #4-40 unc(6.0*10.1mm) round screwlock installed
 G:#4-40 threaded hole with #4-40 unc(5.0*9.0mm)screwlock installed
 H:#4-40 threaded hole with M3(5.8*10.0mm)screwlock buld-packed
 I:#4-40 threaded hole with #4-40 unc(6.4*10.5mm)single(anigh #1pin)screwlock installed
 J:#4-40 threaded hole with #4-40 unc(4.5*5.0*9.0mm) round "-" font screwlock installed
 K:#4-40 threaded hole with #4-40 unc(4.5*6.4*10.5mm) round "-" font screwlock installed
 S:#4-40 threaded hole with #4-40 unc(6.2*10.2mm)single(anigh #1pin)screwlock installed
 T:#4-40 threaded hole with#4-40 unc(5.0*9.0mm)screwlock buld-packed

DO NOT SCALE DRAWING

| | | |
|--|--|---|
| DIMENSIONS: <input type="checkbox"/> $\frac{mm}{[INCH]}$ <input type="checkbox"/> $\frac{INCH}{[mm]}$ <input checked="" type="checkbox"/> $\frac{mm}{[ONLY]}$ | CAD GENERATED DRAWING, DO NOT MANUALLY UPDATE DRAWN BY AND DATE JUSTIN XING 07-20-06 |  Y-S ELECTRONIC CO., LTD. No. 101, Sec. 1, Long-An Street, Lu-Chu, Taoyuan, Taiwan, R.O.C. TEL: +886-3-3609819 FAX: +886-3-3609817 |
| | UNLESS OTHERWISE SPECIFIED, GENERAL TOLERANCE: DECIMALS ANGLES X. ±0.38 [0.015] X° ±3° .X ±0.25 [0.010] .X° ±1.0° .XX ±0.13 [0.005] | |
| MATERIAL FINISH | SCALE: 1 : 1 SIZE: A3 | DRAWING NO. 192-XXXXXXXX FILE NO.: SHEET 1 OF 1 |