

THE INFORMATION CONTAINED IN THIS DOCUMENT IS PROPRIETARY TO Y-S ELECTRONIC. ANY REPRODUCTION IN PART OR WHOLE WITHOUT PRIOR WRITTEN APPROVAL OR AUTHORIZATION OF Y-S ELECTRONIC IS STRICTLY PROHIBITED.

ROHS COMPLIANT

REV.	DESCRIPTION	ECN NO.	DWN.	CHK.	APVD.	DATE
A			Xie	Zheng	ZHOU	2016.09.09
B	修正貼紙		Xie	Zheng	ZHOU	2016.09.28
C	英文SPECIFICATION修正為SPECIFICATION		fan	xie	ZHOU	2017.05.12

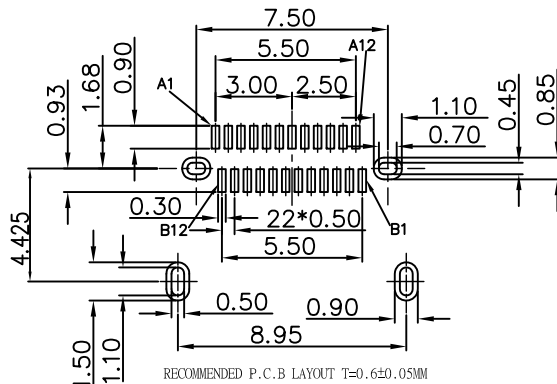
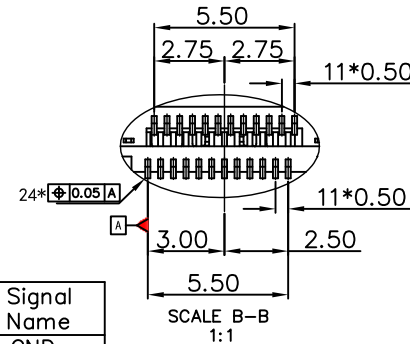
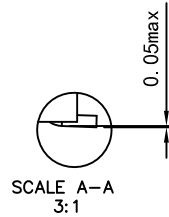
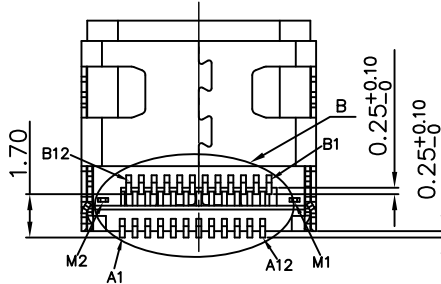
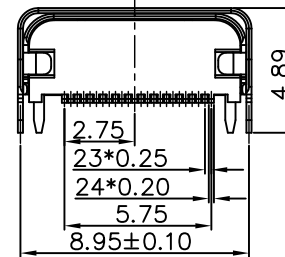
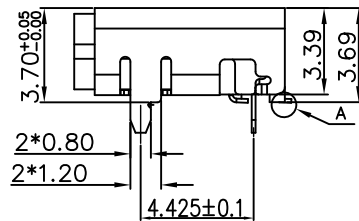
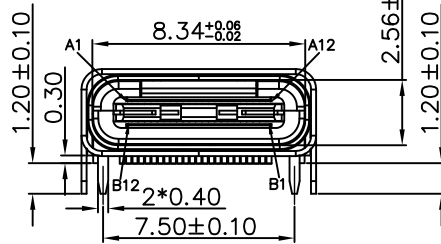
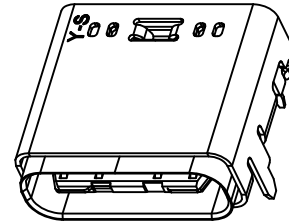
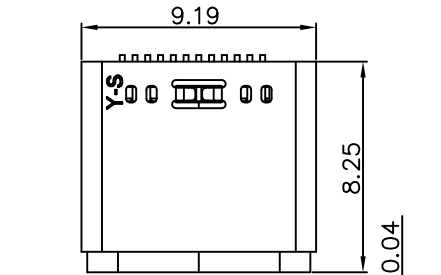
PRODUCT SPECIFICATION

Material:
 PLASTIC:Glass-Filled Thermoplastic high temperature LCP
 G/F 30% color:BLACK
 SHELL: SUS 304 ,T=0.20MM.
 CONTACT: Phosphor Bronze, T=0.15MM.
 EMC PAD: SUS 304, T=0.15MM.
 MID-PLATE: SUS 304, T=0.15MM.
 PLATING:
 SHELL:HOOK PLATING 80u" Ni.
 TERMINAL:30u" Min Gold on contact area,2u" Min Gold on solder tails,base Nickel: 80u" .
 See drawing
 STANDARD DATA
 Rating current:5.0A for VBUS (i.e.,pins A4,A9,B4,B9)
 1.25A for Vconn and GND (i.e.,pins B5,A1,A12,B1,B12)
 0.25A for all the other contacts
 ELECTRICAL
 Insulator resistance: 100M ohms Min
 Withstanding voltage: 100 VAC / minute
 Contact resistance: 40 m ohms Max
 MECHANICAL
 Mating force: 5~20N.
 Unmating force: 8~20N.
 Durability: 10000 cycles Min.

Ordering Information

184j - XX X X X X X
 a b c d e f

- a. No. Of Pins
24: 24 positions
- b. Contact Type
1: Male
2: Female
- c. Contact Plating
0: Gold flash selective gold
1: 5u" selective gold over 50u" nickel
2: 15u" selective gold over 50u" nickel
3: 30u" selective gold over 50u" nickel
- d. Shell Type
1: Nickel
- e. Insulator Color
1: Black (LCP)
- f. Contact Type(Signal Pin)
1: SMT TYPE(Sink type)
2: Edge Type
3: Waveless Type
4: SMT Type (Two-Row Type)



PIN	Signal Name	PIN	Signal Name
A1	GND	M2	GND
A2	SSTXp1	B12	GND
A3	SSTXn1	B11	SSRXp1
A4	VBUS	B10	SSRXn1
A5	CC1	B9	VBUS
A6	Dp1	B8	SBU2
A7	Dn1	B7	Dn2
A8	SBU1	B6	Dp2
A9	VBUS	B5	CC2
A10	SSRXn2	B4	VBUS
A11	SSRXp2	B3	SSTXn2
A12	GND	B2	SSTXp2
		B1	GND
		M1	GND

DIMENSIONS:

mm [INCH] INCH [mm] mm ONLY

UNLESS OTHERWISE SPECIFIED, GENERAL TOLERANCE:
 DECIMALS ANGLES
 X. ±0.38 [0.015] X° ±3°
 .X ±0.25 [0.010] .X° ±1.0°
 .XX ±0.13 [0.005]

MATERIAL:

FINISH:

CAD GENERATED DRAWING, DO NOT MANUALLY UPDATE

DRAWN BY AND DATE
STEVEN 2016.03.02

CHECKED BY AND DATE
XIE 2016.03.02

APPROVED BY AND DATE
ZHOU 2016.03.02

THIRD ANGLE PROJECTION



SCALE:
1 : 1

SIZE: A3



TITLE
184J SERIES
USB 3.1 TYPE C SMT TYPE

DRAWING NO. 184J-2423114-SS	REV C
SHEET 1 OF 5	

DO NOT SCALE DRAWING