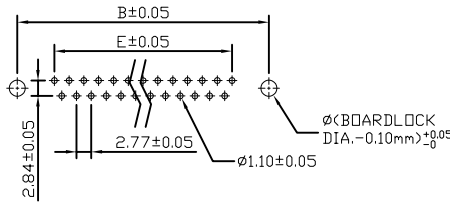
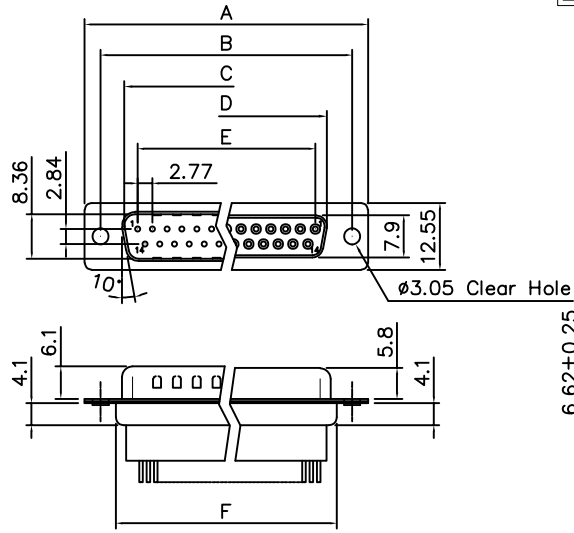


THE INFORMATION CONTAINED IN THIS DOCUMENT IS PROPRIETARY TO Y-S ELECTRONIC, ANY REPRODUCTION IN PART OR WHOLE WITHOUT PRIOR WRITTEN APPROVAL OR AUTHORIZATION OF Y-S ELECTRONIC IS STRICTLY PROHIBITED.

RoHS COMPLIANT

REVISIONS				
REV	ECN NO.	DESCRIPTION	APPROVED BY	DATE



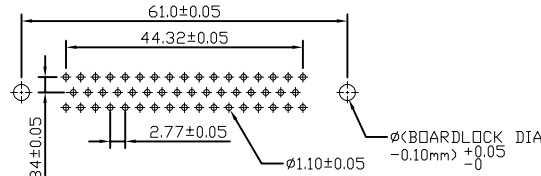
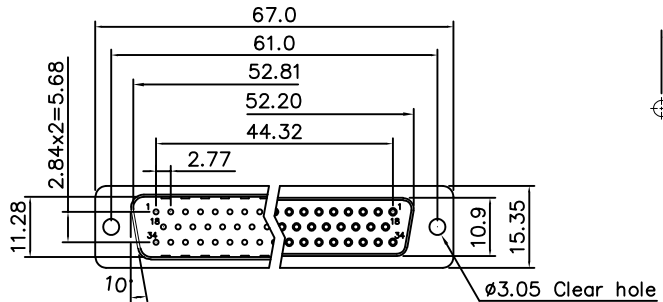
RECOMMENDED PCB LAYOUT

Product Specification
Material
 Insulator :Glass-Filled Thermoplastic PBT,UL94V-0 rated
 Contact :Brass
 Front shell : Steel, 60u" Nickel Over 50u" min Copper
 Back shell : Steel, 100u" Tin Over 50u" min Copper
 Clinch Nut : Brass, Nickel Plated
 Boardlock : Brass, Tin Plated
 Screwlock : Steel, Nickel Plated

Electrical
 Contact Resistance :20 milliohms
 Insulation Resistance :1000 magohms at 500 VDC
 Dielectric Withstanding Voltage :
 1000 VAC/rms 60Hz for 1 minute
 Current Rating :3 AMP
 Volatge Rating :250 VAC/rms 60Hz
 Operation Temperature : -25°C to +85°C

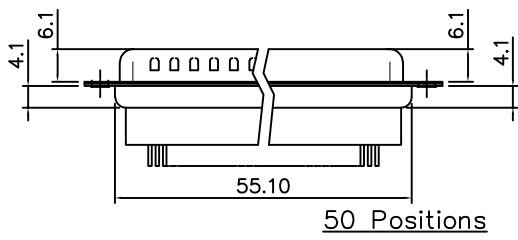
Dimensions

Positions	A	B	C	D	E	F
9	30.81	24.99	16.92	16.33	11.08	19.20
15	39.20	33.30	25.25	24.70	19.39	27.70
25	53.05	47.04	38.96	38.40	33.24	41.10
37	69.40	63.50	55.42	54.80	49.86	57.30

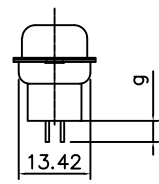


RECOMMENDED PCB LAYOUT

DO NOT SCALE DRAWING



50 Positions

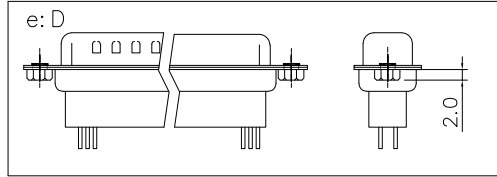
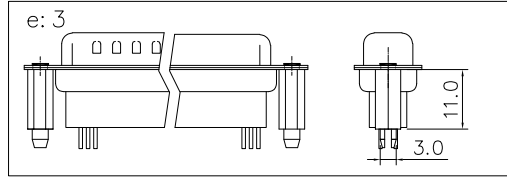
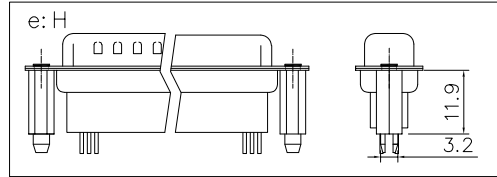
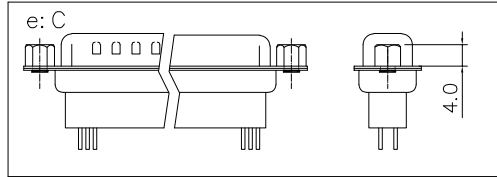
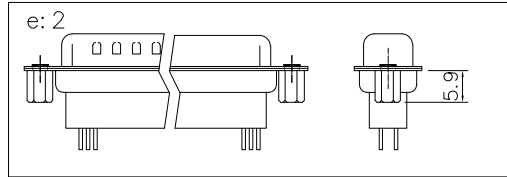
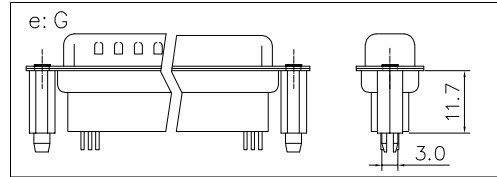
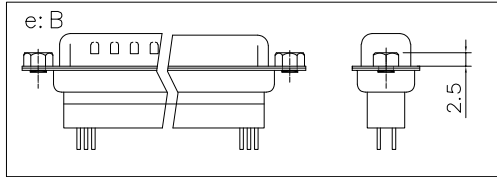
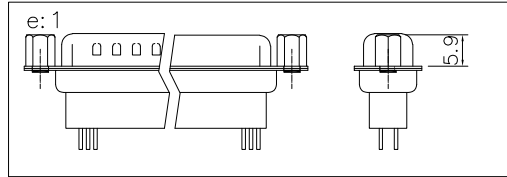
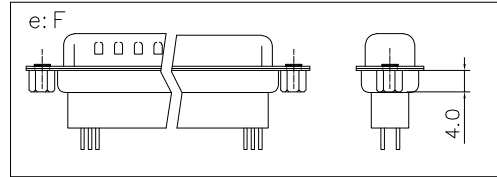
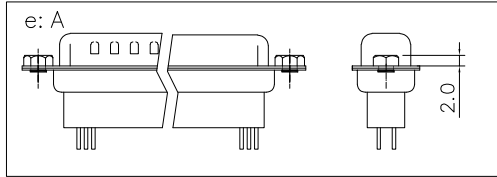
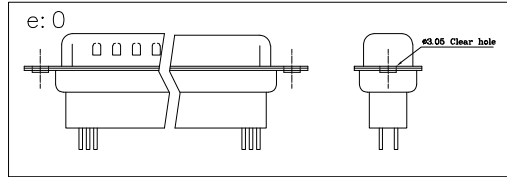


DIMENSIONS: <input type="checkbox"/> mm [INCH] <input type="checkbox"/> INCH [mm] <input checked="" type="checkbox"/> mm ONLY	CAD GENERATED DRAWING, DO NOT MANUALLY UPDATE	
	UNLESS OTHERWISE SPECIFIED, GENERAL TOLERANCE: DECIMALS ANGLES .X ±0.38 [0.015] X* ±3° .XX ±0.25 [0.010] .X* ±1.0° .XX ±0.13 [0.005]	
MATERIAL	CHECKED BY AND DATE JUSTIN XING 07-03-06	TITLE 155 SERIES D-SUB HIGH PROFILE STRAIGHT TYPE
FINISH	APPROVED BY AND DATE KING CHIU 07-03-06	DRAWING NO. 155-XXXXXXXXXX
SCALE: 1 : 1	SIZE: A3	REV A
FILE NO.:		SHEET 1 OF 3

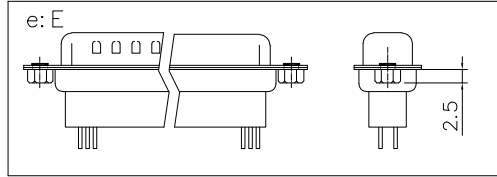
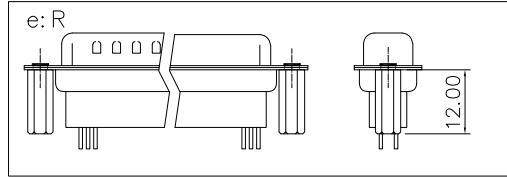
THE INFORMATION CONTAINED IN THIS DOCUMENT IS PROPRIETARY TO Y-S ELECTRONIC, ANY REPRODUCTION IN PART OR WHOLE WITHOUT PRIOR WRITTEN APPROVAL OR AUTHORIZATION OF Y-S ELECTRONIC IS STRICTLY PROHIBITED.

RoHS COMPLIANT

REVISIONS				
REV	ECN NO.	DESCRIPTION	APPROVED BY	DATE




CONSULT SALES OR
FACTORY FOR OTHER
MOUNTING STYLE OPTIONS



DIMENSIONS:	
<input type="checkbox"/> mm [INCH]	<input type="checkbox"/> INCH [mm]
<input checked="" type="checkbox"/> mm ONLY	
UNLESS OTHERWISE SPECIFIED, GENERAL TOLERANCE:	
DECIMALS	ANGLES
.X ±0.38 [0.015]	X° ±3°
.X ±0.25 [0.010]	.X° ±1.0°
.XX ±0.13 [0.005]	
MATERIAL	
FINISH	

CAD GENERATED DRAWING, DO NOT MANUALLY UPDATE
DRAWN BY AND DATE JUSTIN XING 07-03-06
CHECKED BY AND DATE JUSTIN XING 07-03-06
APPROVED BY AND DATE KING CHIU 07-03-06
THIRD ANGLE PROJECTION
SCALE: 1 : 1
SIZE: A3

 Y-S ELECTRONIC CO., LTD. No. 101, Sec. 1, Long-An Street, Lu-Chu, Taoyuan, Taiwan, R.O.C. TEL: +886-3-3609819 FAX: +886-3-3609817	TITLE 155 SERIES D-SUB HIGH PROFILE STRAIGHT TYPE	
	DRAWING NO. 155-XXXXXXXXXX	REV A
FILE NO.:	SHEET 3 OF 3	

DO NOT SCALE DRAWING

THE INFORMATION CONTAINED IN THIS DOCUMENT IS PROPRIETARY TO Y-S ELECTRONIC, ANY REPRODUCTION IN PART OR WHOLE WITHOUT PRIOR WRITTEN APPROVAL OR AUTHORIZATION OF Y-S ELECTRONIC IS STRICTLY PROHIBITED.

RoHS COMPLIANT

Ordering Information

155 - $\frac{XX}{a}$ $\frac{X}{b}$ $\frac{X}{c}$ $\frac{X}{d}$ $\frac{X}{e}$ $\frac{X}{f}$ $\frac{X}{g}$ $\frac{X}{h}$

REVISIONS				
REV	ECN NO.	DESCRIPTION	APPROVED BY	DATE

a. No. Of Contacts:

- 09: 09 positions
- 15: 15 positions
- 25: 25 positions
- 37: 37 positions
- 50: 50 positions

b. Gender

- 1: Male 3: Male(Add height Black plastic)
- 2: Female

c. Contact Plating

- 0:Gold flash selective gold
- 1:5u" selective gold on contact
- 2:10u" selective gold on contact
- 3:15u" selective gold on contact
- 4:30u" selective gold on contact
- 5:50u" selective gold on contact
- 6:Full gold flash

d. Shell plating :

- 0. Cr⁺³yellow chrome
- 1. Nickel(standard)
- 2. Tin
- 3. Cr⁺⁶yellow chrome
- 4. Gold flash
- 5. Tin, dimple
- 6. Special tin
- 7. Tin(With Y-S Logo)
- 8. Cut edge shell Ni
- 9. Special Nickel

e. Rivet Options :

- 0: ϕ 3.05mm clear hole
- 1:Front rivet 5.9mm
- 2:Rear rivet, 5.9mm
- 3:Boardlock+2 prong11.0*3.0mm
- 4:Boardlock+4 prong11.0*3.0mm
- 5:Boardlock+2 prong14.2*3.0mm
- 6:Boardlock+2 prong10.9*3.2mm
- 7:Boardlock+2 prong10.0*3.0mm
- 8:Boardlock+2 prong11.1*3.2mm
- A:Front rivet, 2.0mm
- B:Front rivet, 2.5mm
- C:Front rivet, 4.0mm
- D:Rear rivet, 2.0mm
- E:Rear rivet, 2.5mm
- F:Rear rivet, 4.0mm
- G:Boardlock+2 prong11.7*3.0mm
- H:Boardlock+2 prong11.9*3.2mm
- I:Boardlock+2 prong13.5*3.0mm
- J:Boardlock+2 prong14.5*3.0mm
- K:Boardlock+2 prong10.0*3.2mm
- L:Boardlock+2 prong10.6*3.2mm
- M:Boardlock+2 prong12.7*3.0mm
- N:Rear rivet, 12.7mm
- O:Boardlock+2 prong 12.7*3.2mm
- P:Boardlock+2 prong15.0*3.2mm
- Q:Boardlock+2 prong9.6*3.2mm
- R:Rear rivet, 12.0mm
- S:Rear rivet, 14.0mm
- T:Boardlock+2 prong 6x3.2mm
- U:Boardlock+2 prong 12.0x3.2mm
- V:Economical type
- W:Boardlock+2 prong 12.33x3.5mm

f. Flange Mounting Option :

- 0: ϕ 3.05mm clear hole
- 1:#4-40 threaded hole
- 2:#4-40 threaded hole with #4-40 unc(5.0*10.0mm)screwlock installed
- 3:#4-40 threaded hole with #4-40 unc(5*10mm)screwlock bulk-packed
- 4:M3 threaded hole
- 5:#4-40 threaded hole with M3(5*10mm)screwlock installed
- 6:M2.6 threaded hole
- 7:#4-40 threaded hole with M2.6(5*10mm)screwlock installed
- 8:#4-40 threaded hole with #4-40 unc(5.8*10.8mm)screwlock installed
- 9:#4-40 insert(not through)
- A:#4-40 threaded hole with M3(5.8*10.8mm)screwlock installed
- B:#4-40 threaded hole with #4-40 unc(4.8*10.8mm)screwlock installed
- C:#4-40 threaded hole with #4-40 unc(5.8*10.8mm)"-font screwlock installed
- D:#4-40 threaded hole with #4-40 unc(4.8*11.8mm)screwlock installed


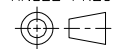
g. Contact Type :

- 1:Stamped pin:5.4mm
- 2:Machined pin:5.4mm
- 3:Stamped pin:3.6mm
- 4:Stamped pin:7.2mm
- 5:Stamped pin:4.0mm(male)
- 6:Machined pin:3.8mm
- 7:Stamped pin:2.8mm
- 8:Stamped pin:3.0mm

h. Ferrite :

- 0. Without ferrite
- 1. With ferrite

DO NOT SCALE DRAWING

DIMENSIONS: <input type="checkbox"/> mm [INCH] <input type="checkbox"/> INCH [mm] <input checked="" type="checkbox"/> mm ONLY	CAD GENERATED DRAWING, DO NOT MANUALLY UPDATE DRAWN BY AND DATE JUSTIN XING 07-20-06	 Y-S ELECTRONIC CO., LTD. No. 101, Sec. 1, Long-An Street, Lu-Chu, Taoyuan, Taiwan, R.O.C. TEL: +886-3-3609819 FAX: +886-3-3609817
	CHECKED BY AND DATE JUSTIN XING 07-20-06	
UNLESS OTHERWISE SPECIFIED, GENERAL TOLERANCE: DECIMALS ANGLES .X ±0.38 [0.015] X° ±3° .X ±0.25 [0.010] .X° ±1.0° .XX ±0.13 [0.005]	APPROVED BY AND DATE KING CHIU 07-20-06	TITLE 155 SERIES D-SUB HIGH PROFILE STRAIGHT TYPE
MATERIAL	THIRD ANGLE PROJECTION 	DRAWING NO. 155-XXXXXXXXXX
FINISH	SCALE: 1 : 1	SIZE: A3
FILE NO.:		SHEET 1 OF 1