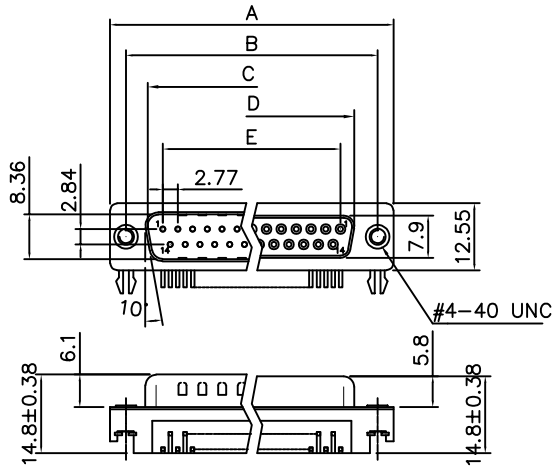


THE INFORMATION CONTAINED IN THIS DOCUMENT IS PROPRIETARY TO Y-S ELECTRONIC, ANY REPRODUCTION IN PART OR WHOLE WITHOUT PRIOR WRITTEN APPROVAL OR AUTHORIZATION OF Y-S ELECTRONIC IS STRICTLY PROHIBITED.

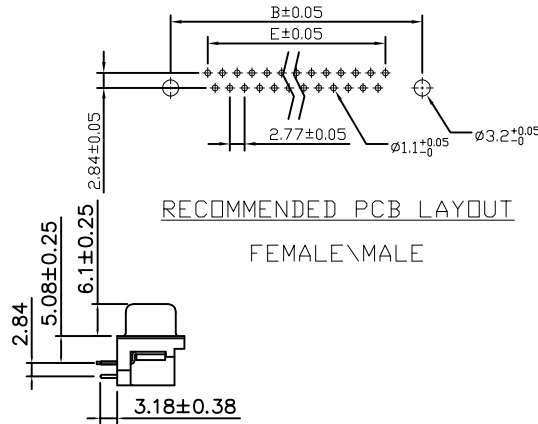
RoHS COMPLIANT

REVISIONS				
REV	ECN NO.	DESCRIPTION	APPROVED BY	DATE
A				



5.08mm Footprint

Positions	A	B	C	D	E
9	30.81	24.99	16.92	16.33	11.08
15	39.20	33.30	25.25	24.70	19.39
25	53.05	47.04	38.96	38.40	33.24
37	69.40	63.50	55.42	54.80	49.86



RECOMMENDED PCB LAYOUT
FEMALE\MALE

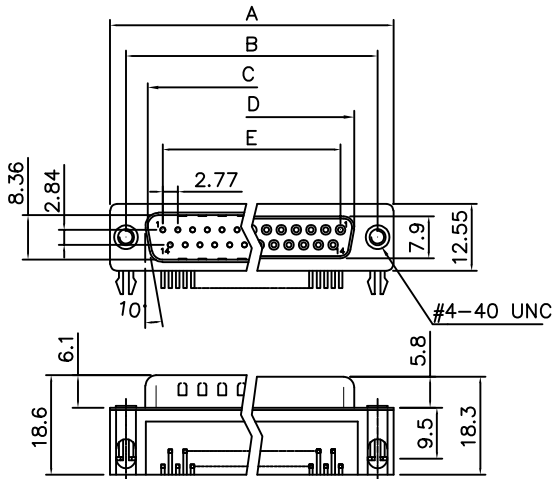
Product Specification

Material

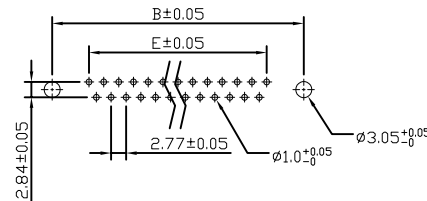
Insulator : Glass-Filled Thermoplastic PBT, UL94V-0
 Contact : Brass
 Shell : Steel, 60u" Nickel Over 50u" min Copper
 Clinch Nut : Brass, Nickel Plated.
 Boardlock : Steel, Tin Plated.
 Screwlock : Steel, Nickel Plated.

Electrical

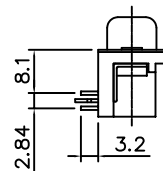
Contact Resistance : 20 milliohms
 Insulation Resistance : 1000 megohms at 500 VDC
 Dielectric Withstanding Voltage : 1000 VAC/rms 60Hz for 1 minute
 Current Rating : 3 AMP
 Voltage Rating : 250 VAC/rms 60Hz
 Operation Temperature : -25°C to +85°C



7.2mm Footprint



RECOMMENDED PCB LAYOUT



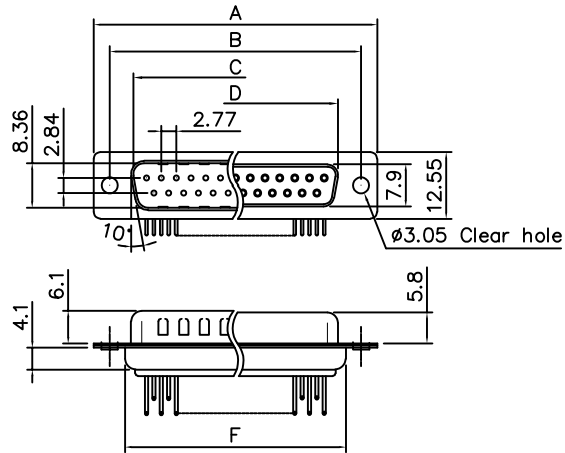
DIMENSIONS: <input type="checkbox"/> mm [INCH] <input type="checkbox"/> INCH [mm] <input checked="" type="checkbox"/> mm ONLY	CAD GENERATED DRAWING, DO NOT MANUALLY UPDATE DRAWN BY AND DATE JUSTIN XING 12-19-05	
	UNLESS OTHERWISE SPECIFIED, GENERAL TOLERANCE: DECIMALS ANGLES .X ±0.38 [0.015] X* ±3° .XX ±0.25 [0.010] .X* ±1.0° .XX ±0.13 [0.005]	
MATERIAL FINISH	SCALE: 1 : 1	SIZE: A3
DRAWING NO. 107-XXXXXXXXXXXX		REV A
FILE NO.:		SHEET 1 OF 6

DO NOT SCALE DRAWING

THE INFORMATION CONTAINED IN THIS DOCUMENT IS PROPRIETARY TO Y-S ELECTRONIC, ANY REPRODUCTION IN PART OR WHOLE WITHOUT PRIOR WRITTEN APPROVAL OR AUTHORIZATION OF Y-S ELECTRONIC IS STRICTLY PROHIBITED.

RoHS COMPLIANT

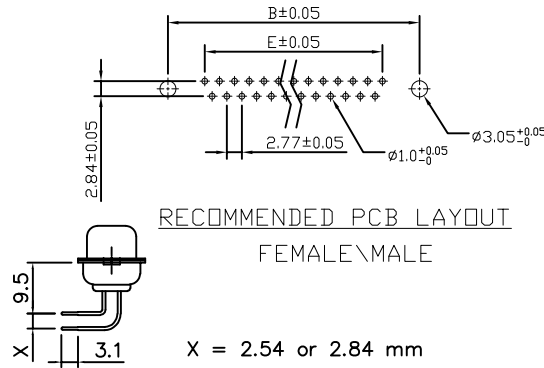
REVISIONS				
REV	ECN NO.	DESCRIPTION	APPROVED BY	DATE
A				



9.4mm Footprint Machined Pin (W/O Rear Cover)

Dimensions

Positions	A	B	C	D	E	F
9	30.81	24.99	16.92	16.33	11.08	19.20
15	39.20	33.30	25.25	24.70	19.39	27.70
25	53.05	47.04	38.96	38.40	33.24	41.10
37	69.40	63.50	55.42	54.80	49.86	57.30



RECOMMENDED PCB LAYOUT
FEMALE\MALE

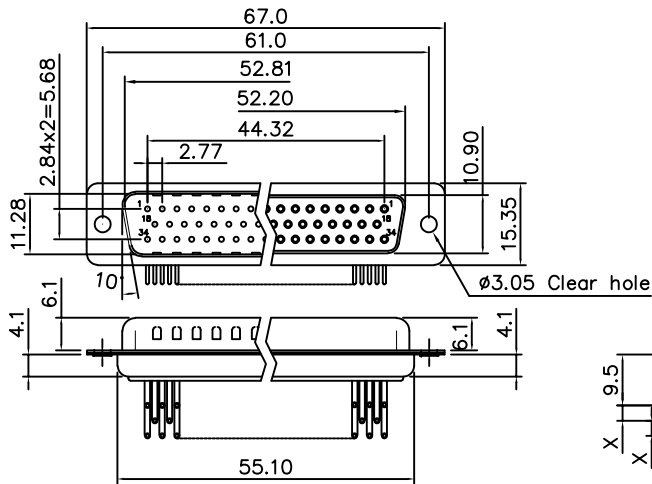
Product Specification

Material

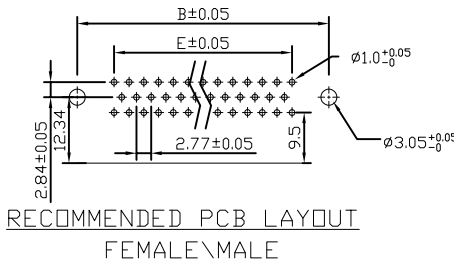
Insulator : Glass-Filled Thermoplastic PBT, UL94V-0
 Contact : Brass
 Shell : Steel, 60u" Nickel Over 50u" min Copper
 Clinch Nut : Brass, Nickel Plated.
 Boardlock : Steel, Tin Plated.
 Screwlock : Steel, Nickel Plated.

Electrical

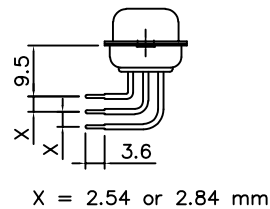
Contact Resistance : 20 milliohms
 Insulation Resistance : 1000 magohms at 500 VDC
 Dielectric Withstanding Voltage : 1000 VAC/rms 60Hz for 1 minute
 Current Rating : 3 AMP
 Volatge Rating : 250 VAC/rms 60Hz
 Operation Temperature : -25°C to +85°C



50 Positions Machined Pin (W/O Rear Cover)



RECOMMENDED PCB LAYOUT
FEMALE\MALE



X = 2.54 or 2.84 mm

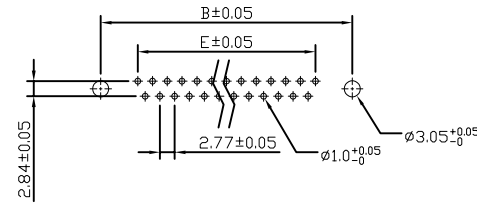
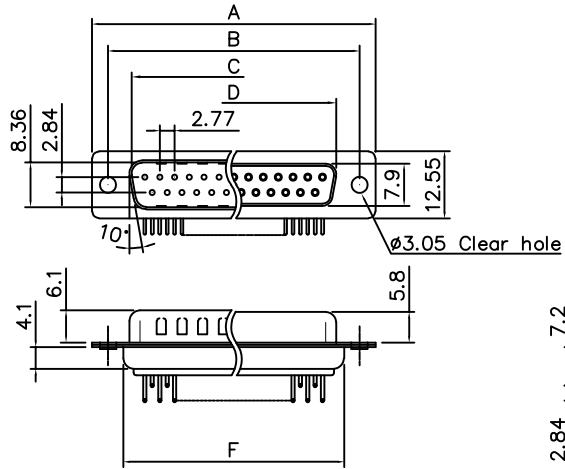
DIMENSIONS: <input type="checkbox"/> mm [INCH] <input type="checkbox"/> INCH [mm] <input checked="" type="checkbox"/> mm ONLY	CAD GENERATED DRAWING, DO NOT MANUALLY UPDATE DRAWN BY AND DATE JUSTIN XING 12-19-05	
	UNLESS OTHERWISE SPECIFIED, GENERAL TOLERANCE: DECIMALS ANGLES .X ±0.38 [0.015] X* ±3° .X ±0.25 [0.010] .X* ±1.0° .XX ±0.13 [0.005]	
MATERIAL FINISH	THIRD ANGLE PROJECTION 	DRAWING NO. 107-XXXXXXXXXXXX
SCALE: 1 : 1	SIZE: A3	REV A
FILE NO.:		SHEET 4 OF 6

DO NOT SCALE DRAWING

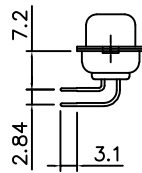
THE INFORMATION CONTAINED IN THIS DOCUMENT IS PROPRIETARY TO Y-S ELECTRONIC, ANY REPRODUCTION IN PART OR WHOLE WITHOUT PRIOR WRITTEN APPROVAL OR AUTHORIZATION OF Y-S ELECTRONIC IS STRICTLY PROHIBITED.

RoHS COMPLIANT

REVISIONS				
REV	ECN NO.	DESCRIPTION	APPROVED BY	DATE
A				



RECOMMENDED PCB LAYOUT
FEMALE\MALE



Product Specification

Material

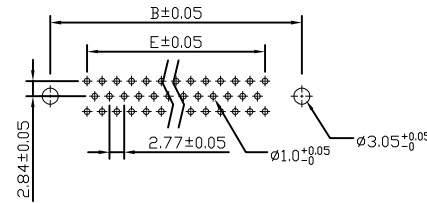
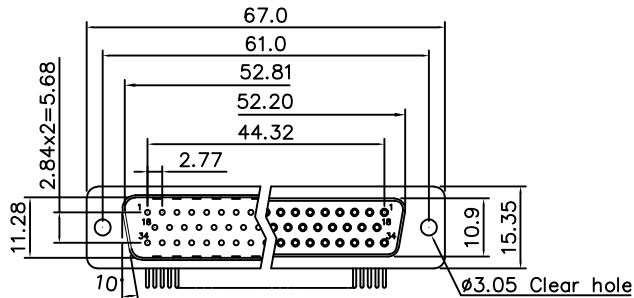
Insulator : Glass-Filled Thermoplastic PBT, UL94V-0
 Contact : Brass
 Shell : Steel, 60u" Nickel Over 50u" min Copper
 Clinch Nut : Brass, Nickel Plated.
 Boardlock : Steel, Tin Plated.
 Screwlock : Steel, Nickel Plated.

Electrical

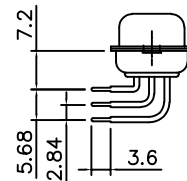
Contact Resistance : 20 milliohms
 Insulation Resistance : 1000 megohms at 500 VDC
 Dielectric Withstanding Voltage : 1000 VAC/rms 60Hz for 1 minute
 Current Rating : 3 AMP
 Voltage Rating : 250 VAC/rms 60Hz
 Operation Temperature : -25°C to +85°C

Dimensions 7.2mm Footprint Machined Pin (W/O Rear Cover)

Positions	A	B	C	D	E	F
9	30.81	24.99	16.92	16.33	11.08	19.20
15	39.20	33.30	25.25	24.70	19.39	27.70
25	53.05	47.04	38.96	38.40	33.24	41.10
37	69.40	63.50	55.42	54.80	49.86	57.30



RECOMMENDED PCB LAYOUT
FEMALE\MALE



50 Positions Machined Pin (W/O Rear Cover)

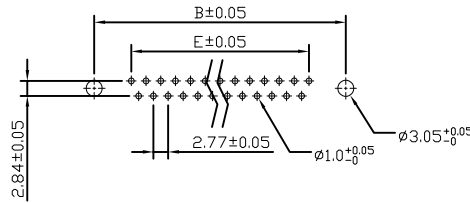
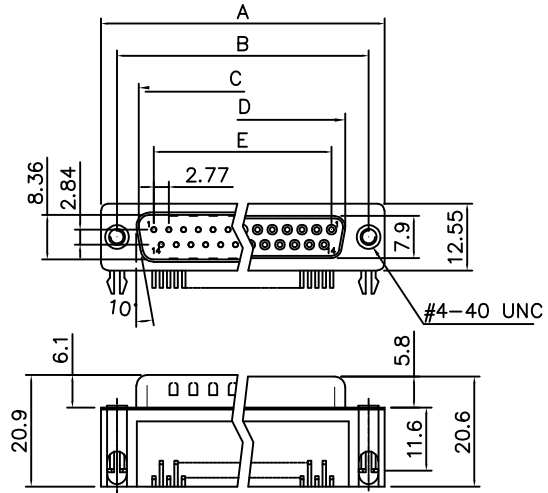
DIMENSIONS: <input type="checkbox"/> mm [INCH] <input type="checkbox"/> INCH [mm] <input checked="" type="checkbox"/> mm ONLY	CAD GENERATED DRAWING, DO NOT MANUALLY UPDATE DRAWN BY AND DATE JUSTIN XING 12-19-05	No. 101, Sec. 1, Long-An Street, Lu-Chu, Taoyuan, Taiwan, R.O.C. TEL: +886-3-3609819 FAX: +886-3-3609817		
	UNLESS OTHERWISE SPECIFIED, GENERAL TOLERANCE: DECIMALS ANGLES .X ±0.38 [0.015] X* ±3° .XX ±0.25 [0.010] .X* ±1.0° .XX ±0.13 [0.005]		CHECKED BY AND DATE JUSTIN XING 12-19-05 APPROVED BY AND DATE KING CHIU 12-19-05 THIRD ANGLE PROJECTION	TITLE 107 SERIES D-SUB RIGHT ANGLE TYPE
MATERIAL FINISH	SCALE: 1 : 1	SIZE: A3	DRAWING NO. 107-XXXXXXXXXXXX	REV A
FILE NO.:			SHEET 3 OF 6	

DO NOT SCALE DRAWING

THE INFORMATION CONTAINED IN THIS DOCUMENT IS PROPRIETARY TO Y-S ELECTRONIC. ANY REPRODUCTION IN PART OR WHOLE WITHOUT PRIOR WRITTEN APPROVAL OR AUTHORIZATION OF Y-S ELECTRONIC IS STRICTLY PROHIBITED.

RoHS COMPLIANT

REVISIONS				
REV	ECN NO.	DESCRIPTION	APPROVED BY	DATE
A				



RECOMMENDED PCB LAYOUT
FEMALE\MALE

Product Specification

Material

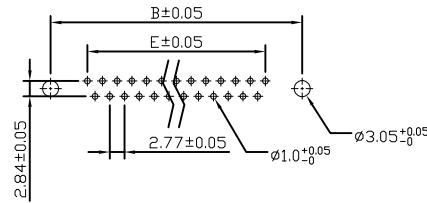
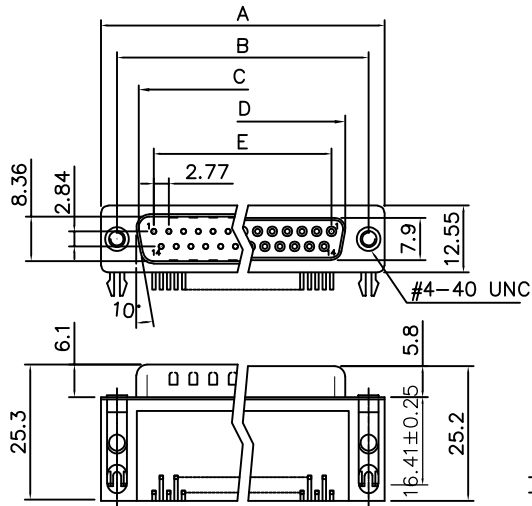
- Insulator : Glass-Filled Thermoplastic PBT, UL94V-0
- Contact : Brass
- Shell : Steel, 60u" Nickel Over 50u" min Copper
- Clinch Nut : Brass, Nickel Plated.
- Boardlock : Steel, Tin Plated.
- Screwlock : Steel, Nickel Plated.

Electrical

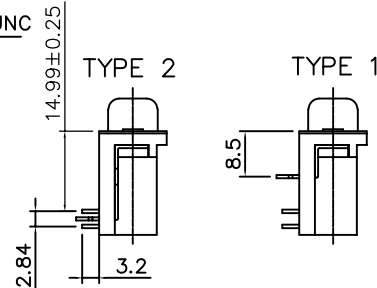
- Contact Resistance : 20 milliohms
- Insulation Resistance : 1000 magohms at 500 VDC
- Dielectric Withstanding Voltage : 1000 VAC/rms 60Hz for 1 minute
- Current Rating : 3 AMP
- Volatge Rating : 250 VAC/rms 60Hz
- Operation Temperature : -25°C to +85°C

9.4mm Footprint

Dimensions					
Positions	A	B	C	D	E
9	30.81	24.99	16.92	16.33	11.08
15	39.20	33.30	25.25	24.70	19.39
25	53.05	47.04	38.96	38.40	33.24
37	69.40	63.50	55.42	54.80	49.86



RECOMMENDED PCB LAYOUT



13.84mm Footprint

DIMENSIONS: <input type="checkbox"/> mm [INCH] <input type="checkbox"/> INCH [mm] <input checked="" type="checkbox"/> mm ONLY		
UNLESS OTHERWISE SPECIFIED, GENERAL TOLERANCE: DECIMALS ANGLES .X ±0.38 [0.015] X° ±3° .X ±0.25 [0.010] .X° ±1.0° .XX ±0.13 [0.005]		
CAD GENERATED DRAWING, DO NOT MANUALLY UPDATE DRAWN BY AND DATE JUSTIN XING 12-19-05		TITLE 107 SERIES D-SUB, RIGHT ANGLE TYPE
CHECKED BY AND DATE JUSTIN XING 12-19-05 APPROVED BY AND DATE KING CHIU 12-19-05		
MATERIAL FINISH		DRAWING NO. 107-XXXXXXXXXX
THIRD ANGLE PROJECTION 		REV A
SCALE: 1 : 1 SIZE: A3		FILE NO.: SHEET 2 OF 6

DO NOT SCALE DRAWING

THE INFORMATION CONTAINED IN THIS DOCUMENT IS PROPRIETARY TO Y-S ELECTRONIC, ANY REPRODUCTION IN PART OR WHOLE WITHOUT PRIOR WRITTEN APPROVAL OR AUTHORIZATION OF Y-S ELECTRONIC IS STRICTLY PROHIBITED.

RoHS COMPLIANT

Ordering Information

107 - $\frac{XX}{a}$ $\frac{X}{b}$ $\frac{X}{c}$ $\frac{X}{d}$ $\frac{X}{e}$ $\frac{X}{f}$ $\frac{X}{g}$ $\frac{X}{h}$ $\frac{X}{i}$ $\frac{X}{j}$

REVISIONS				
REV	ECN NO.	DESCRIPTION	APPROVED BY	DATE

a. No. Of Contacts:

- 09: 09 positions
- 15: 15 positions
- 25: 25 positions
- 37: 37 positions
- 50: 50 positions

b. Contact Type

- 1: Male 3: Male(reverse direction)
- 2: Female 4: Female(reverse direction)
- 6: Female(3.5mm)
- 8: Female(4.0mm)

c. Contact Plating

- 0. Gold flash selective gold
- 1. 5u"selective gold on contact
- 2. 10u"selective gold on contact
- 3. 15u"selective gold on contact
- 4. 30u"selective gold on contact
- 5. 50u"selective gold on contact
- 6. Gold flash full gold
- 7: Gold flash selective gold add plating
- 8: Full tin
- 9. Matte tin
- A. 30u"selective gold on contact;matte tin
- B. 15u"gold flash full gold
- C. 15u"selective gold on contact;matte tin
- D. Gold flash full gold 50u"

d. Shell plating :

- 0. Cr³⁺yellow chrome
- 1. Nickel(standard)
- 2. Tin
- 3. Cr⁶⁺yellow chrome
- 4. Gold flash
- 5. Tin, not dimple
- 6. Cr⁶⁺yellow chrome, dimple
- 7. Special tin, dimple
- 8. Cr³⁺yellow chrome, dimple
- 9. Matte tin
- A. Nickel plated(With Y-S Logo)
- B. Tin plated(With Y-S Logo)
- C. Nickel(Stainless steel SUS304)
- D. Nickel(Stainless steel SUS303)
- E. Special Ni, dimple
- F. Special Ni, dimple(Continuous 24 hours salt spray)
- G. Special Ni, dimple(Continuous 48 hours salt spray)

e. Insulator Color

- 1:Blue 9:PC99 Purple
- 2:Black A:Black W/O halogen
- 3:White B:BLUE 322C
- 4:Gray C:PCC99 Green 322C
- 5:Green
- 6:Black(high temperature)
- 7:PC99 red
- 8:PC99 yellow

f. Rivet Options :

- 0:None
- 1:Grounding Strap #4-40 threaded on panel
- 2:Grounding Strap #4-40 threaded on PCB&panel
- 3:Grounding Hook Boardlock+2 prong(Tin)
- 4:Grounding Hook Boardlock+4 prong
- 5:Grounding Strap, M3
- 6:Grounding Strap, clear hole
- 7:Plastic, Grounding Strap+Grounding Hook Boardlock 2 prong
- 8:Plastic, L-shaped bracket(suspend machined pin)
- 9:Grounding Strap full include(13.84mm)
- A:Grounding Strap half include(13.84mm)
- B:Grounding Strap full include(7.2mm)
- C:Grounding Hook Boardlock+2 prong(matte tin)
- D:Grounding Hook Boardlock+4 prong(matte tin)
- E:Rear rivet, 4.0mm
- F:L-shaped bracket+Boardlock+2 prong
- G:Front rivet, 5.9mm
- H:Front rivet, 4.0mm

g. Flange Mounting Option :

- 0: \varnothing 3.05mm clear hole
- 1: #4-40 threaded hole

- 2: #4-40 threaded hole with #4-40 unc(4.8*11.8mm)screwlock installed
- 3: #4-40 threaded hole with #4-40 unc(4.8*11.8mm)screwlock bulk-packed
- 4: M3 threaded hole
- 5: #4-40 threaded hole with M3(4.8*11.8mm)screwlock installed
- 6: M2.6 threaded hole
- 7: #4-40 threaded hole with M2.6(4.8*11.8mm)screwlock installed
- 8: #4-40 threaded hole with screw locking type #4-40 unc(4.80*11.80mm)
- 9: Front hex rivet, 5.9mm (#4-40 unc), pattern
- A: #4-40 threaded hole with pan head screw(cross slot) screwlock installed
- B: #4-40 threaded hole with #4-40 unc(6.2*11.8mm)screwlock installed
- C: #4-40 threaded hole with M2.6(5.8*11.8mm)screwlock installed
- D: #4-40 threaded hole with M3(4.8*11.8mm)screwlock installed+flat washer
- E: #4-40 threaded hole with M3(5.0*13.0mm)screwlock installed
- F: #4-40 threaded hole with M2.6(5.8*11.8mm)screwlock installed
- G: #4-40 threaded hole with #4-40 unc(5.8*10.8mm)screwlock installed
- H: M3 boardlock
- I: #4-40 threaded hole with #4-40 unc(5.8*11.8mm)screwlock installed
- J: #4-40 threaded hole with #4-40 unc(4.8*11.8mm)screwlock installed+flat washer
- K: Front hex rivet, 5.9mm(M3)
- L: #4-40 threaded hole with screw locking type M3(5.8*11.8mm)
- M: Front round rivet, #4-40 unc, pattern
- N: #4-40 unc boardlock installed
- O: #4-40 threaded hole with #4-40 unc(5.8*11.8mm)screwlock bulk-packed
- P: Front hex rivet(5.0mm), M3
- Q: #4-40 threaded hole with screw locking type M3(5.8*10.8mm)
- R: #4-40 threaded hole with screw locking type #4-40 unc(5.8*11.8mm)
- S: Front nuts #4-40unc with round "-" font #4-40 unc(6.1*11.94mm)screwlock installed
- T: #4-40 threaded hole with round "-" font #4-40 unc(5.0*10.5mm)screwlock installed
- U: #4-40 threaded hole with screw locking type with round "-" font #4-40 unc(6.1*11.94mm)
- V: #4-40 threaded hole with #4-40 unc(3.9*10.57mm)screwlock installed
- W: #4-40 threaded hole with #4-40 unc(4.2*10.7mm)screwlock installed
- X: #4-40 threaded hole with #4-40 unc(5.8*13.0mm)screwlock installed
- Y: #4-40 threaded hole with #4-40 unc(5.0*10.0mm)screwlock installed
- Z: #4-40 threaded hole with round "-" font #4-40 unc(5.8x10.8mm)screwlock installed

h. Contact Type :

- 1: Stamped Pin
- 2: Machined Pin
- 3: Machined Pin(with shaped plastic)
- 4: Stamped Pin(Phosor Bronze)
- 5: Machined Pin(with L type bracket)


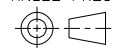
i. Ferrite Options :

- 0: Without Ferrite
- 1: With Ferrite

j. Footprint :

- 1: 7.2mm footprint
- 2: 9.4mm footprint
- 3: 13.84mm footprint Type 1 (plastic long Type, Boardlock 7.2mm)
- 4: 13.84mm footprint Type 2 (plastic long Type)
- 5: 5.08mm footprint
- 6: 3.0mm footprint
- 7: 13.84mm footprint Typ 3 (plastic short Type, Boardlock 7.2mm)
- 8: 13.48mm footprint

DO NOT SCALE DRAWING

DIMENSIONS: <input type="checkbox"/> mm [INCH] <input type="checkbox"/> INCH [mm] <input checked="" type="checkbox"/> mm ONLY		CAD GENERATED DRAWING, DO NOT MANUALLY UPDATE DRAWN BY AND DATE JUSTIN XING 07-20-06		 Y-S ELECTRONIC CO., LTD.	
UNLESS OTHERWISE SPECIFIED, GENERAL TOLERANCE: DECIMALS ANGLES X. ±0.38 [0.015] X* ±3° .X ±0.25 [0.010] .X* ±1.0° .XX ±0.13 [0.005]		CHECKED BY AND DATE JUSTIN XING 07-20-06 APPROVED BY AND DATE KING CHIU 07-20-06 THIRD ANGLE PROJECTION			
MATERIAL				DRAWING NO.	
FINISH		SCALE: 1:1		SIZE: A3	
FILE NO.:				SHEET 1 OF 1	



TITLE
107 SERIES
D-SUB RIGHT ANGLE TYPE

DRAWING NO.
107-XXXXXXXXXX

REV
A

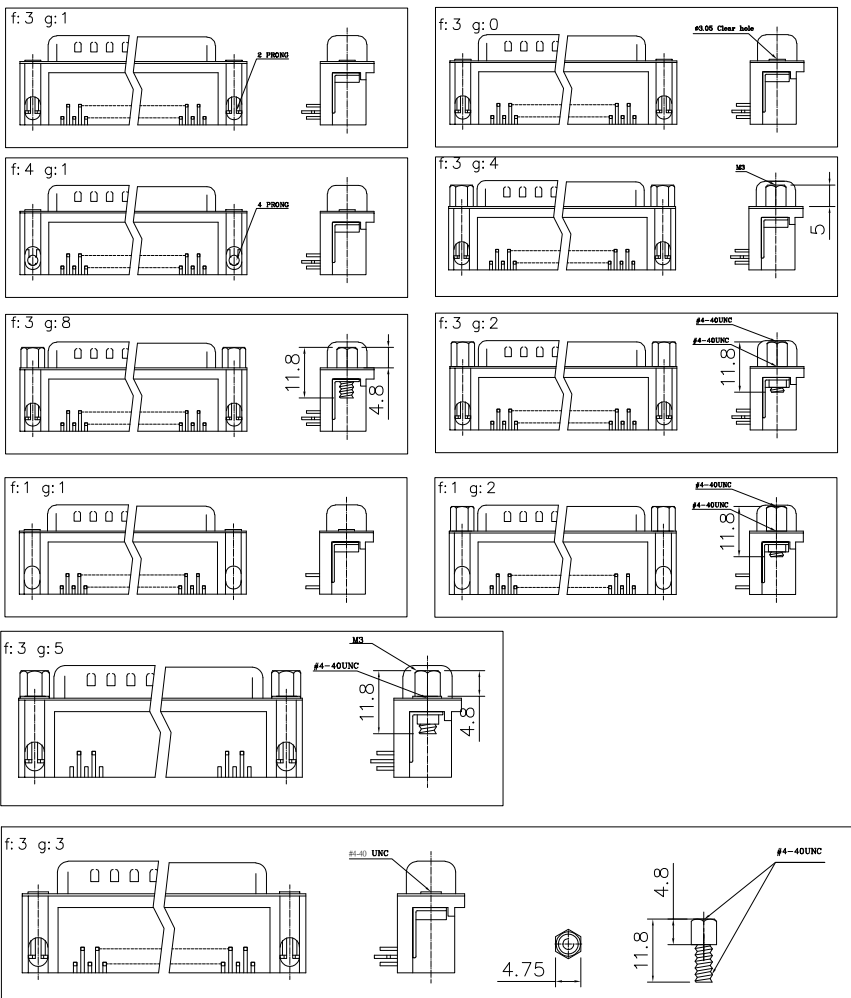
FILE NO.:

SHEET 1 OF 1

THE INFORMATION CONTAINED IN THIS DOCUMENT IS PROPRIETARY TO Y-S ELECTRONIC, ANY REPRODUCTION IN PART OR WHOLE WITHOUT PRIOR WRITTEN APPROVAL OR AUTHORIZATION OF Y-S ELECTRONIC IS STRICTLY PROHIBITED.

RoHS COMPLIANT

REVISIONS				
REV	ECN NO.	DESCRIPTION	APPROVED BY	DATE



DO NOT SCALE DRAWING

DIMENSIONS: <input type="checkbox"/> mm [INCH] <input type="checkbox"/> INCH [mm] <input checked="" type="checkbox"/> mm ONLY	CAD GENERATED DRAWING, DO NOT MANUALLY UPDATE		
	DRAWN BY AND DATE JUSTIN XING 12-19-05		CHECKED BY AND DATE JUSTIN XING 12-19-05
UNLESS OTHERWISE SPECIFIED, GENERAL TOLERANCE: DECIMALS ANGLES .X ±0.38 [0.015] X* ±3° .XX ±0.25 [0.010] .X* ±1.0° .XX ±0.13 [0.005]	APPROVED BY AND DATE KING CHIU 12-19-05	DRAWING NO. 107-XXXXXXXXXXXX	REV A
MATERIAL	THIRD ANGLE PROJECTION 	FILE NO.:	SHEET 6 OF 6
FINISH	SCALE: 1 : 1	SIZE: A3	