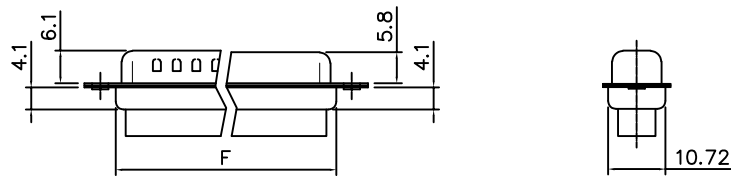
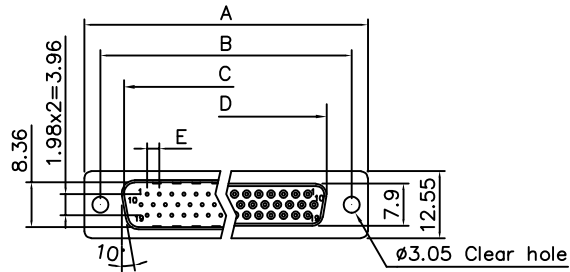


THE INFORMATION CONTAINED IN THIS DOCUMENT IS PROPRIETARY TO Y-S ELECTRONIC, ANY REPRODUCTION IN PART OR WHOLE WITHOUT PRIOR WRITTEN APPROVAL OR AUTHORIZATION OF Y-S ELECTRONIC IS STRICTLY PROHIBITED.

RoHS COMPLIANT

REVISIONS				
REV	ECN NO.	DESCRIPTION	APPROVED BY	DATE



Product Specification

Material

Insulator : Glass-Filled Thermoplastic PBT, UL94V-0  
 Front shell : Steel, 60u" Nickel Over 50u" min Copper  
 Back shell : Steel, 100u" Tin Over 50u" min Copper

Clinch Nut : Brass, Nickel Plated

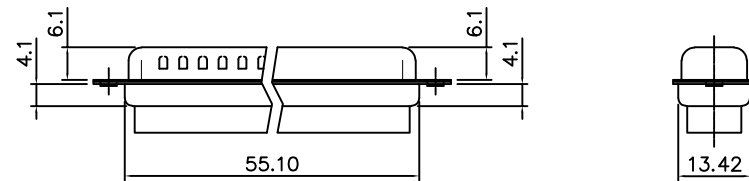
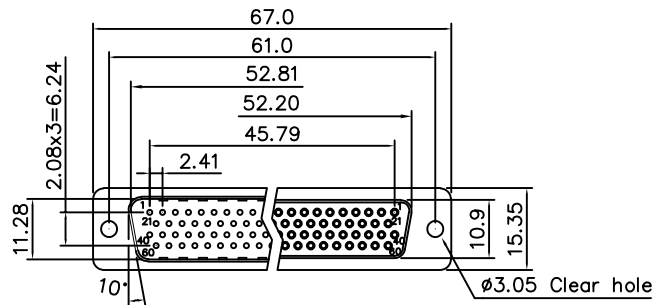
Screwlock : Steel, Nickel Plated

Electrical

Insulation Resistance :1000  
 megohms at 500 VDC  
 Dielectric Withstanding Voltage :  
 1000 VAC/rms 60Hz for 1 minute  
 Operation Temperature : -25°C to +85°C

DIMENSION TABLE

POSITIONS	A	B	C	D	E	F
15	30.81	24.99	16.92	16.33	2.29	19.20
26	39.20	33.30	25.25	24.70	2.29	27.70
44	53.05	47.04	38.96	38.40	2.29	41.10
62	69.40	63.50	55.42	54.80	2.41	57.30



78 Positions

DIMENSIONS: <input type="checkbox"/> mm [INCH] <input type="checkbox"/> INCH [mm] <input checked="" type="checkbox"/> mm ONLY	CAD GENERATED DRAWING, DO NOT MANUALLY UPDATE DRAWN BY AND DATE JUSTIN XING 07-03-06			
	UNLESS OTHERWISE SPECIFIED, GENERAL TOLERANCE: DECIMALS      ANGLES .X    ±0.38 [0.015]    X*    ±3° .XX   ±0.25 [0.010]    .X*   ±1.0° .XX   ±0.13 [0.005]		CHECKED BY AND DATE JUSTIN XING 07-03-06 APPROVED BY AND DATE KING CHIU 07-03-06 THIRD ANGLE PROJECTION 	TITLE 106 SERIES D-SUB H.D. CRIMP TYPE
MATERIAL FINISH	SCALE: 1 : 1	SIZE: A3	DRAWING NO. 106-XXXXXXX	REV A
FILE NO.:		SHEET 1 OF 3		

DO NOT SCALE DRAWING

1 2 3 4 5 6 7 8

THE INFORMATION CONTAINED IN THIS DOCUMENT IS PROPRIETARY TO Y-S ELECTRONIC, ANY REPRODUCTION IN PART OR WHOLE WITHOUT PRIOR WRITTEN APPROVAL OR AUTHORIZATION OF Y-S ELECTRONIC IS STRICTLY PROHIBITED.

**RoHS COMPLIANT**

REVISIONS				
REV	ECN NO.	DESCRIPTION	APPROVED BY	DATE

Ordering Information

106 -  $\frac{XX}{a}$   $\frac{X}{b}$   $\frac{X}{c}$   $\frac{X}{d}$   $\frac{X}{e}$   $\frac{X}{f}$

a. No. Of Pins

- 15: 15 positions
- 26: 26 positions
- 44: 44 positions
- 62: 62 positions
- 78: 78 positions

b. Contact Type:

- 1: Male    3: Male (phosphor bronze)
- 2: Female    4: Female (phosphor bronze)

d. Shell plating :

- 0. Cr<sup>+3</sup> yellow chrome
- 1. Nickel (standard)
- 2. Tin
- 3. Cr<sup>+6</sup> yellow chrome
- 4. Tin dimple
- 5. Cr<sup>+6</sup> yellow chrome, dimple
- 6. Tin tab shell  $\phi$ 4.0
- 7. Special tin, dimple
- 8. Tin tab shell, dimple
- 9. Cr<sup>+3</sup> yellow chrome, dimple
- A. Nickel dimple
- B. Special, Fornt Nickel back tin
- C. Special Ni, Back&front shell

d. Position of Clinch Nut :

- 0:  $\phi$ 3.05mm clear hole
- 1: Front rivet 5.9mm
- 2: Rear rivet, 5.9mm
- 3: Standoff+2 prong boardlock(6.0\*3.2mm)
- A: Front rivet, 2.0mm
- B: Front rivet, 2.5mm
- C: Front rivet, 4.0mm
- D: Rear rivet, 2.0mm
- E: Rear rivet, 2.5mm
- F: Rear rivet, 4.0mm
- G: Front rivet, 5.0mm


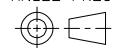
e. Flange Mounting Option :

- 0:  $\phi$ 3.05mm clear hole
- 1: #4-40 threaded hole
- 2: #4-40 threaded hole with #4-40 unc(5\*10mm)screwlock installed
- 3: #4-40 threaded hole with #4-40 unc(5\*10mm)screwlock buld-packed
- 4: M3 threaded hole
- 5: #4-40 threaded hole with M3(5\*10mm)screwlock installed
- 6: M2.6 threaded hole
- 7: #4-40 threaded hole with M2.6(5.8\*10.8mm)screwlock installed
- 8: #4-40 threaded hole with #4-40 unc(5.8\*10.8mm)screwlock installed
- 9: #4-40 threaded hole with M3(5.8\*10.8mm)screwlock installed

f. Pin Removal Options

- X: Pin #9 removed
- Y: Pin #4 and #9 removed
- Z: Pin #4, #9 and #11 removed
- B: Pin #4, #5, #9, removed

DO NOT SCALE DRAWING

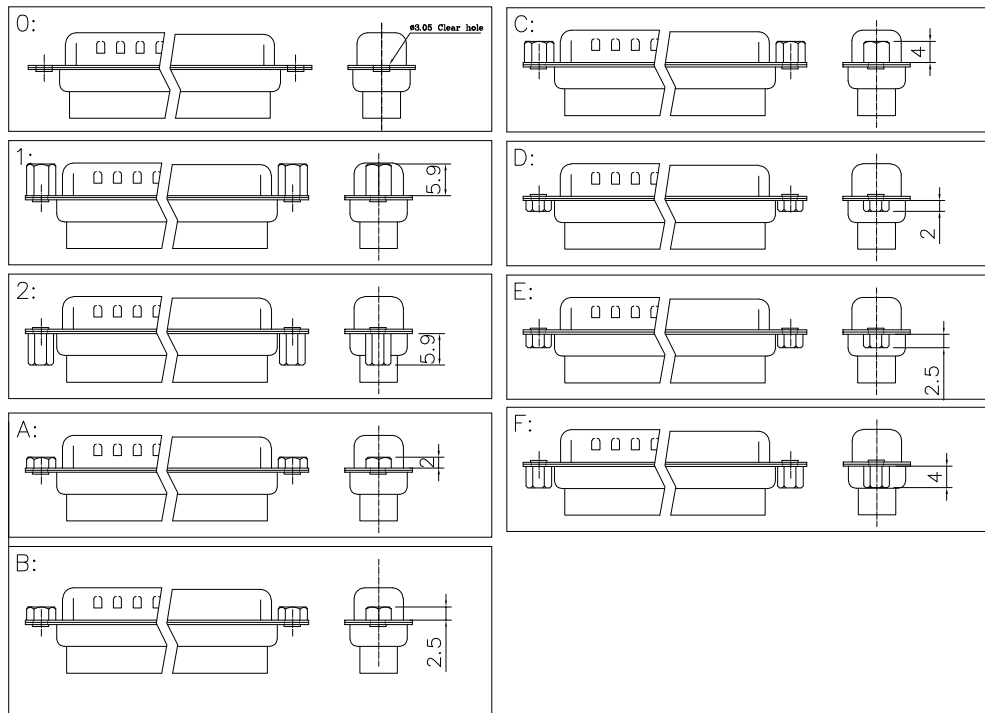
DIMENSIONS: <input type="checkbox"/> $\frac{mm}{[INCH]}$ <input type="checkbox"/> $\frac{INCH}{[mm]}$ <input checked="" type="checkbox"/> $\frac{mm}{ONLY}$		CAD GENERATED DRAWING, DO NOT MANUALLY UPDATE DRAWN BY AND DATE JUSTIN XING 17-20-06		 <b>Y-S ELECTRONIC CO., LTD.</b>	
UNLESS OTHERWISE SPECIFIED, GENERAL TOLERANCE: DECIMALS                      ANGLES .X $\pm 0.38$ [0.015]                      X* $\pm 3^\circ$ .X $\pm 0.25$ [0.010]                      .X* $\pm 1.0^\circ$ .XX $\pm 0.13$ [0.005]		CHECKED BY AND DATE JUSTIN XING 07-20-06 APPROVED BY AND DATE KING CHIU 07-20-06 THIRD ANGLE PROJECTION 		TITLE 106 SERIES D-SUB H.D. CRIMP TYPE	
MATERIAL		SCALE: 1 : 1		DRAWING NO. 106-XXXXXXX	
FINISH		SIZE: A3		REV A	
FILE NO.:				SHEET 1 OF 1	

THE INFORMATION CONTAINED IN THIS DOCUMENT IS PROPRIETARY TO Y-S ELECTRONIC, ANY REPRODUCTION IN PART OR WHOLE WITHOUT PRIOR WRITTEN APPROVAL OR AUTHORIZATION OF Y-S ELECTRONIC IS STRICTLY PROHIBITED.

RoHS COMPLIANT

REVISIONS				
REV	ECN NO.	DESCRIPTION	APPROVED BY	DATE

d: Position of Clinch Nut



DO NOT SCALE DRAWING

DIMENSIONS: <input type="checkbox"/> mm [INCH] <input type="checkbox"/> INCH [mm] <input checked="" type="checkbox"/> mm ONLY		CAD GENERATED DRAWING, DO NOT MANUALLY UPDATE			
UNLESS OTHERWISE SPECIFIED, GENERAL TOLERANCE: DECIMALS                      ANGLES .X   ±0.38 [0.015]            X*   ±3° .X   ±0.25 [0.010]            .X*   ±1.0° .XX ±0.13 [0.005]		DRAWN BY AND DATE JUSTIN XING 07-03-06			
MATERIAL		CHECKED BY AND DATE JUSTIN XING 07-03-06		DRAWING NO. 106-XXXXXXX	
FINISH		APPROVED BY AND DATE KING CHIU 07-03-06		REV A	
THIRD ANGLE PROJECTION 		SCALE: 1 : 1		SIZE: A3	
FILE NO.:				SHEET 3 OF 3	