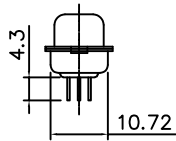
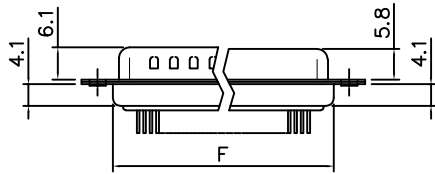
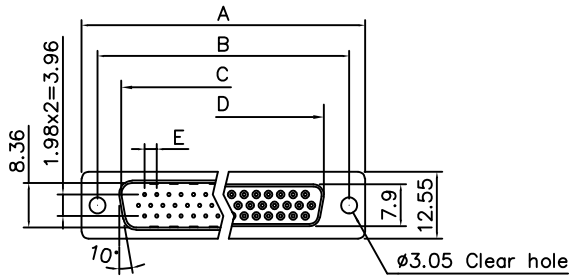


THE INFORMATION CONTAINED IN THIS DOCUMENT IS PROPRIETARY TO Y-S ELECTRONIC, ANY REPRODUCTION IN PART OR WHOLE WITHOUT PRIOR WRITTEN APPROVAL OR AUTHORIZATION OF Y-S ELECTRONIC IS STRICTLY PROHIBITED.

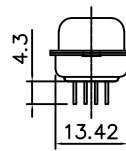
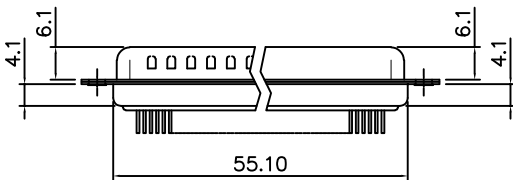
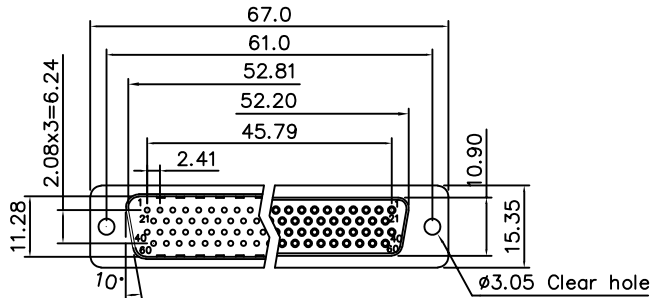
RoHS COMPLIANT

REVISIONS				
REV	ECN NO.	DESCRIPTION	APPROVED BY	DATE



DIMENSION TABLE

POSITIONS	A	B	C	D	E	F
15	30.81	24.99	16.92	16.33	2.29	19.20
26	39.20	33.30	25.25	24.70	2.29	27.70
44	53.05	47.04	38.96	38.40	2.29	41.10
62	69.40	63.50	55.42	54.80	2.41	57.30



78 Positions

Product Specification


Material

Insulator : Glass-Filled Thermoplastic PBT, UL94V-0
 Contact : Brass
 Front shell : Steel, 60u" Nickel Over 50u" min Copper
 Back shell : Steel, 100u" Tin Over 50u" min Copper
 Clinch Nut : Brass, Nickel Plated
 Boardlock : Brass, Tin Plated
 Screwlock : Steel, Nickel Plated

Electrical

Contact Resistance : 20 milliohms
 Insulation Resistance : 1000 megohms at 500 VDC
 Dielectric Withstanding Voltage : 1000 VAC/rms 60Hz for 1 minute
 Current Rating : 3 AMP
 Voltage Rating : 250 VAC/rms 60Hz
 Operation Temperature : -25°C to +85°C

DO NOT SCALE DRAWING

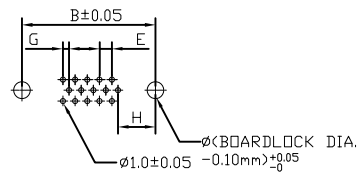
DIMENSIONS: <input type="checkbox"/> mm [INCH] <input type="checkbox"/> INCH [mm] <input checked="" type="checkbox"/> mm ONLY	CAD GENERATED DRAWING, DO NOT MANUALLY UPDATE DRAWN BY AND DATE JUSTIN XING 07-03-06	 Y-S ELECTRONIC CO., LTD. No. 101, Sec. 1, Long-An Street, Lu-Chu, Taoyuan, Taiwan, R.O.C. TEL: +886-3-3609819 FAX: +886-3-3609817
	UNLESS OTHERWISE SPECIFIED, GENERAL TOLERANCE: DECIMALS ANGLES .X ±0.38 [0.015] X° ±3° .X ±0.25 [0.010] .X° ±1.0° .XX ±0.13 [0.005]	
MATERIAL FINISH	SCALE: 1 : 1 SIZE: A3	DRAWING NO. 105-XXXXXXXXXX REV A
FILE NO.:		SHEET 1 OF 4

THE INFORMATION CONTAINED IN THIS DOCUMENT IS PROPRIETARY TO Y-S ELECTRONIC, ANY REPRODUCTION IN PART OR WHOLE WITHOUT PRIOR WRITTEN APPROVAL OR AUTHORIZATION OF Y-S ELECTRONIC IS STRICTLY PROHIBITED.

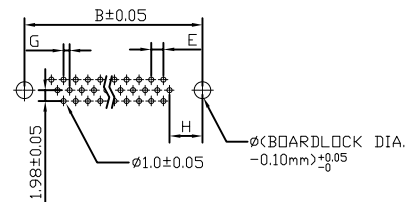
RoHS COMPLIANT

REVISIONS				
REV	ECN NO.	DESCRIPTION	APPROVED BY	DATE

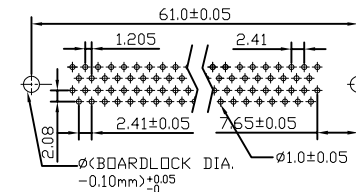
P.C.B LAYOUT PATTERN



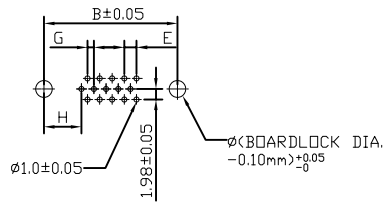
15 POSITION FEMALE



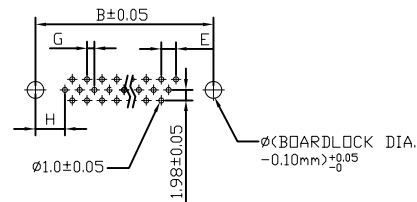
26,44,62 POSITION FEMALE



78 POSITION MALE/FEMALE




15 POSITION MALE



26,44,62 POSITION MALE

Positions	G	H
15M/F	1.145	7.04
26M/F	1.145	6.88
44M/F	1.145	6.88
62M/F	1.205	7.00

DO NOT SCALE DRAWING

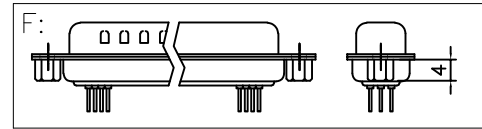
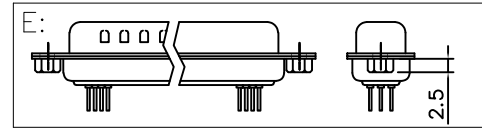
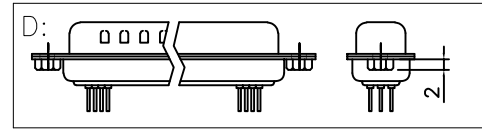
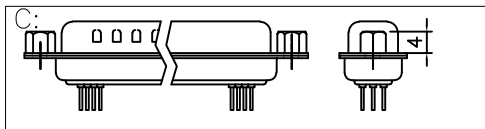
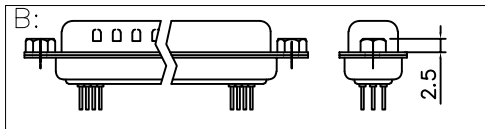
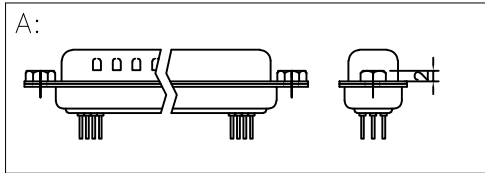
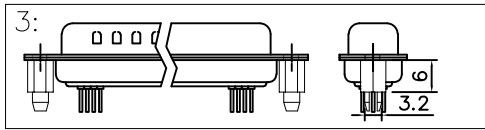
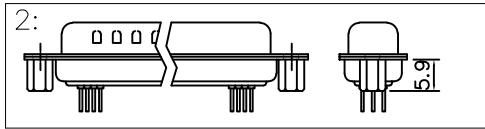
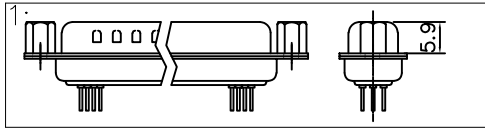
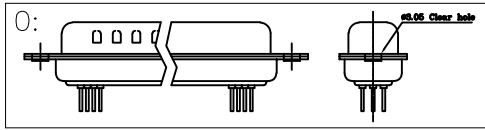
DIMENSIONS: <input type="checkbox"/> mm [INCH] <input type="checkbox"/> INCH [mm] <input checked="" type="checkbox"/> mm ONLY	CAD GENERATED DRAWING, DO NOT MANUALLY UPDATE	 Y-S ELECTRONIC CO., LTD. No. 101, Sec. 1, Long-An Street, Lu-Chu, Taoyuan, Taiwan, R.O.C. TEL: +886-3-3609819 FAX: +886-3-3609817
	UNLESS OTHERWISE SPECIFIED, GENERAL TOLERANCE: DECIMALS ANGLES .X ±0.38 [0.015] X° ±3° .X ±0.25 [0.010] .X° ±1.0° .XX ±0.13 [0.005]	
MATERIAL FINISH	SCALE: 1 : 1 SIZE: A3	DRAWING NO. 105-XXXXXXXXXX REV A
FILE NO.:		SHEET 4 OF 4

THE INFORMATION CONTAINED IN THIS DOCUMENT IS PROPRIETARY TO Y-S ELECTRONIC, ANY REPRODUCTION IN PART OR WHOLE WITHOUT PRIOR WRITTEN APPROVAL OR AUTHORIZATION OF Y-S ELECTRONIC IS STRICTLY PROHIBITED.


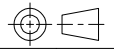
RoHS COMPLIANT

REV	ECN NO.	DESCRIPTION	APPROVED BY	DATE

f: Position of Clinch Nut



DO NOT SCALE DRAWING

DIMENSIONS: <input type="checkbox"/> mm [INCH] <input type="checkbox"/> INCH [mm] <input checked="" type="checkbox"/> mm ONLY	CAD GENERATED DRAWING, DO NOT MANUALLY UPDATE DRAWN BY AND DATE JUSTIN XING 07-03-06	 Y-S ELECTRONIC CO., LTD. No. 101, Sec. 1, Long-An Street, Lu-Chu, Taoyuan, Taiwan, R.O.C. TEL: +886-3-3609819 FAX: +886-3-3609817	
	UNLESS OTHERWISE SPECIFIED, GENERAL TOLERANCE: DECIMALS ANGLES .X ±0.38 [0.015] X° ±3° .X ±0.25 [0.010] .X° ±1.0° .XX ±0.13 [0.005]		CHECKED BY AND DATE JUSTIN XING 07-03-06 APPROVED BY AND DATE KING CHIU 07-03-06 THIRD ANGLE PROJECTION 
MATERIAL FINISH	SCALE: 1 : 1 SIZE: A3	DRAWING NO. 105-XXXXXXXXXX	REV A
FILE NO.:		SHEET 3 OF 4	

1 THE INFORMATION CONTAINED IN THIS DOCUMENT IS PROPRIETARY TO Y-S ELECTRONIC, ANY REPRODUCTION IN PART OR WHOLE WITHOUT PRIOR WRITTEN APPROVAL OR AUTHORIZATION OF Y-S ELECTRONIC IS STRICTLY PROHIBITED.

2 **RoHS COMPLIANT**

REVISIONS				
REV	ECN NO.	DESCRIPTION	APPROVED BY	DATE

3 **Ordering Information**

4 105 - $\frac{XX}{a}$ $\frac{X}{b}$ $\frac{X}{c}$ $\frac{X}{d}$ $\frac{X}{e}$ $\frac{X}{f}$ $\frac{X}{g}$ $\frac{X}{h}$ $\frac{X}{i}$

5 a. No. Of Contacts:

- 15: 15 positions
- 26: 26 positions
- 44: 44 positions
- 62: 62 positions
- 78: 78 positions

b. Contact Type

- 1: Male 3: Male (phosphor bronze)
- 2: Female 4: Female (phosphor bronze)

c. Contact Plating

- 0: Gold flash selective gold(standard)
- 1: 5u" selective gold on contact
- 2: 10u" selective gold on contact
- 3: 15u" selective gold on contact
- 4: 30u" selective gold on contact
- 5: 50u" selective gold on contact
- 6: Full gold flash
- 7: 8u" gold flash full gold
- 8: Full tin
- 9: matte tin selective gold
- A: 30u"matte tin selective gold
- B: 15u"matte tin selective gold
- C: 2.5 μ inch min gold over 12 μ inch Pd-Ni
- D: 2.5 μ inch min gold over 28 μ inch Pd-Ni
- E: 15u" gold flash full gold

d. Shell plating :

- 0. Cr⁺³yellow chrome
- 1. Nickel(standard)
- 2. Tin
- 3. Cr⁺⁶yellow chrome
- 4. Gold flash
- 5. Tin, not dimple
- 6. Cr⁺⁶yellow chrome, dimple
- 7. Tin tab shell dimple
- 8. Special tin, dimple
- 9. Cr⁺³yellow chrome, dimple
- A. Matte tin
- B. tin, L Type
- C. Tin(With Y-S Logo)
- D. Nickel(With Y-S Logo)
- E. Special tin Cutting edges (With Y-S Logo)
- F. Front Shell Ni Cutting edges (With Y-S Logo)

e. Insulator Color

- 1: Blue
- 2: Black
- 3: White
- 4: Gray
- 5: PC99 blue
- 6: Black square
- 7: PC99 blue
- 8: PC99 green
- 9: PC99 yellow
- A: Black(high temperature)
- B: Blue(high temperature)

f. Position of Clinch Nut :

- 0: Ø3.05mm clear hole
- 1: Front rivet, 5.9mm
- 2: Rear rivet, 5.9mm
- 3: Rivet+2 prong boardlock6.0*3.2mm
- 4: Single rivet(front rivet, 5.9mm)
- 5: Rivet+4 prong boardlock6.0*3.2mm
- 6: Rivet+2 prong boardlock6.0*3.2mm ("-" font chimb)
- 7: Rivet+2 prong boardlock7.7*3.2mm ("-" font chimb)
- A: Front rivet, 2.0mm
- B: Front rivet, 2.5mm
- C: Front rivet, 4.0mm
- D: Rear rivet, 2.0mm
- E: Rear rivet, 2.5mm
- F: Rear rivet, 4.0mm
- G: Rivet+2 prong boardlock6.0*3.0mm
- H: Rivet+2 prong boardlock6.0*3.3mm
- I: Rivet+2 prong boardlock7.3*3.2mm
- J: Rear rivet, 3.5mm
- K: Rivet+2 prong boardlock6.6*3.2mm
- L: Rivet+2 prong boardlock7.0*3.2mm
- M: Rivet+2 prong boardlock5.0*3.2mm
- N: Rivet+2 prong boardlock6.0*3.85mm
- O: Rivet Shell of cutting 4 edges
- p: Ni Rivet+2 prong boardlock6.0*3.2mm
- Q: Rivet+2 prong boardlock6.2*3.2mm
- R: Rivet+2 prong boardlock6.3*3.2mm
- S: Rear rivet, 5.0mm

g. Flange Mounting Option :

- 0: Ø3.05mm clear hole
- 1: #4-40 threaded hole
- 2: #4-40 threaded hole with #4-40 unc(5*10mm)screwlock installed
- 3: #4-40 threaded hole with #4-40 unc(5*10mm)screwlock bulk-packed
- 4: M3 threaded hole
- 5: #4-40 threaded hole with M3(5*10mm)screwlock installed
- 6: M2.6 threaded hole
- 7: #4-40 threaded hole with M2.6(5*10mm)screwlock installed
- 8: #4-40 insert(half hole)
- A: #4-40 threaded hole +2 prong boardlock screw:4.75*13.0mm screwlock installed
- B: #4-40 threaded hole with #4-40 unc(5.8*10.8mm)screwlock installed
- C: #4-40 threaded hole with M3(5.8*10.8mm)screwlock installed
- D: #4-40 threaded hole with #4-40 unc(5.5*10.0mm)screwlock installed
- E: #4-40 threaded hole with #4-40 unc(5.8*10.8mm)"-" font screwlock bulk-packed
- F: #4-40 threaded hole with #4-40 unc(5.8*10.8mm)"-" font screwlock installed
- G: #4-40 threaded hole with #4-40 unc(4.8*8.5mm)screwlock bulk-packed
- H: #4-40 threaded hole with #4-40 unc(5.8*10.8mm)screwlock bulk-packed
- I: #4-40 threaded hole with #4-40 unc(6.0*10.5mm)screwlock installed
- J: #4-40 threaded hole with #4-40 unc(6.1*11.8mm)screwlock installed
- K: #4-40 threaded hole with round #4-40 unc(6.2*11.8mm)screwlock installed
- L: #4-40 threaded hole with #4-40 unc(6.0*10.1mm)screwlock installed


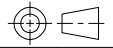
h. Contact Type :

- 0: Machined pin: 8.0mm
- 1: Stamped pin: 4.3mm
- 2: Machined pin: 5.0mm
- 3: Stamped short pin: 3.2mm
- 4: Stamped short pin: 2.4mm
- 5: Machined pin: 11.2mm
- 6: Stamped pin: 4.1mm
- 7: Machined pin: 13.0mm
- H: Stamped pin: 4.3mm; contacts installed in positions 17, 18, 19, 20, 25, 26, 27, 28, 39&40PIN only
- Z: Stamped pin: 4.3mm; 44pin: wanting 13, 28, 42pin
- Y: Mix pin: 4.3mm; 26pin: wanting 5, 6, 7, 8, 9, 14, 23, 24, 25, 26pin

i. Ferrite :

- 0. Without ferrite
- 1. With ferrite

DO NOT SCALE DRAWING

DIMENSIONS: <input type="checkbox"/> MM [INCH] <input type="checkbox"/> INCH [mm] <input checked="" type="checkbox"/> MM ONLY	CAD GENERATED DRAWING, DO NOT MANUALLY UPDATE DRAWN BY AND DATE JUSTIN XING 17-20-06	 Y-S ELECTRONIC CO., LTD. No. 101, Sec. 1, Long-An Street, Lu-Chu, Taoyuan, Taiwan, R.O.C. TEL: +886-3-3609819 FAX: +886-3-3609817
	CHECKED BY AND DATE JUSTIN XING 07-20-06	
UNLESS OTHERWISE SPECIFIED, GENERAL TOLERANCE: DECIMALS ANGLES X: ±0.38 [0.015] X*: ±3° .X ±0.25 [0.010] .X*: ±1.0° .XX ±0.13 [0.005]	APPROVED BY AND DATE KING CHIU 07-20-06	TITLE 105 SERIES D-SUB HD DIP STRAIGHT TYPE
MATERIAL FINISH	THIRD ANGLE PROJECTION 	DRAWING NO. 105-XXXXXXXXXX
SCALE: 1 : 1	SIZE: A3	REV A
FILE NO.:		SHEET 1 OF 1