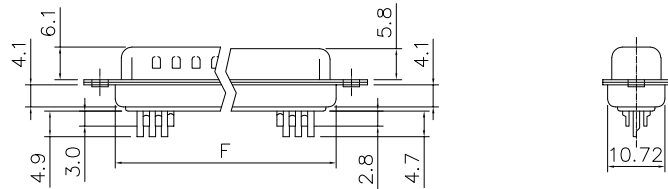
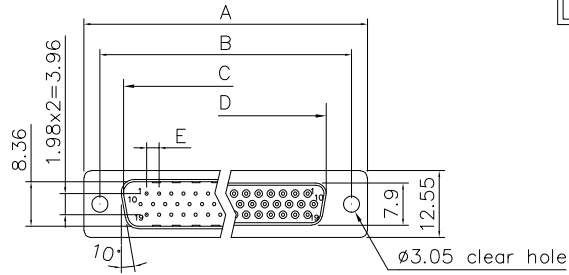


THE INFORMATION CONTAINED IN THIS DOCUMENT IS PROPRIETARY TO Y-S ELECTRONIC, ANY REPRODUCTION IN PART OR WHOLE WITHOUT PRIOR WRITTEN APPROVAL OR AUTHORIZATION OF Y-S ELECTRONIC IS STRICTLY PROHIBITED.

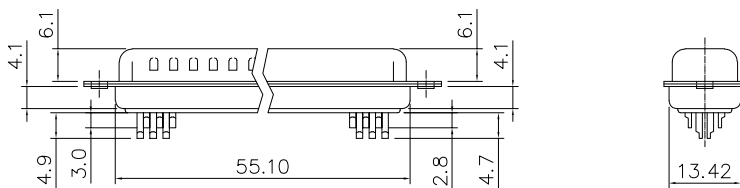
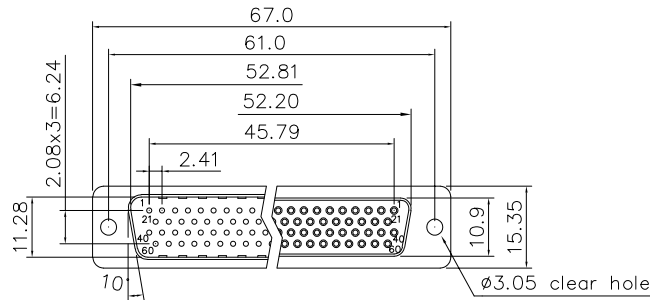
RoHS COMPLIANT

REVISIONS				
REV	ECN NO.	DESCRIPTION	APPROVED BY	DATE
A				



DIMENSION TABLE

POSITIONS	A	B	C	D	E	F
15	30.81	24.99	16.92	16.33	2.29	19.20
26	39.20	33.30	25.25	24.70	2.29	27.70
44	53.05	47.04	38.96	38.40	2.29	41.10
62	69.40	63.50	55.42	54.80	2.41	57.30



Product Specification

Material

Insulator : Glass-Filled Thermoplastic PBT, UL94V-0
 Contact : Brass
 Front shell : Steel, 60u" Nickel Over 50u" min Copper
 Back shell : Steel, 100u" Tin Over 50u" min Copper
 Clinch Nut : Brass, Nickel Plated
 Screwlock : Steel, Nickel Plated

Electrical

Contact Resistance : 20 milliohms
 Insulation Resistance : 1000 megohms at 500 VDC
 Dielectric Withstanding Voltage : 500 VAC/rms 60Hz for 1 minute
 Current Rating : 3 AMP
 Voltage Rating : 250 VAC/rms 60Hz
 Operation Temperature : -25°C to +85°C

DO NOT SCALE DRAWING

DIMENSIONS: <input type="checkbox"/> mm [INCH] <input type="checkbox"/> INCH [mm] <input checked="" type="checkbox"/> mm ONLY	CAD GENERATED DRAWING, DO NOT MANUALLY UPDATE	
	DRAWN BY AND DATE JUSTIN XING 10-20-05	
UNLESS OTHERWISE SPECIFIED, GENERAL TOLERANCE: DECIMALS ANGLES .X ±0.38 [0.015] X* ±3° .X ±0.25 [0.010] .X* ±1.0° .XX ±0.13 [0.005]	CHECKED BY AND DATE JUSTIN XING 10-20-05 APPROVED BY AND DATE KING CHIU 10-20-05	DRAWING NO. 104-XXXXXXXXXXXXX
MATERIAL	THIRD ANGLE PROJECTION 	REV A
FINISH	SCALE: 1 : 1	SIZE: A3
FILE NO.:		SHEET 1 OF 3

THE INFORMATION CONTAINED IN THIS DOCUMENT IS PROPRIETARY TO Y-S ELECTRONIC, ANY REPRODUCTION IN PART OR WHOLE WITHOUT PRIOR WRITTEN APPROVAL OR AUTHORIZATION OF Y-S ELECTRONIC IS STRICTLY PROHIBITED.

RoHS COMPLIANT

Ordering Information

104 - $\frac{XX}{a} \frac{X}{b} \frac{X}{c} \frac{X}{d} \frac{X}{e} \frac{X}{f} \frac{X}{g} \frac{X}{h} \frac{X}{i} \frac{X}{j} \frac{X}{k}$

REVISIONS				
REV	ECN NO.	DESCRIPTION	APPROVED BY	DATE

a. No. Of Contacts:

- 15: 15 positions
- 26: 26 positions
- 44: 44 positions
- 62: 62 positions
- 78: 78 positions

b. Contact type

- 1: Male 3: Male (phosphor bronze)
- 2: Female 4: Female (phosphor bronze)

c. Contact Plating

- 0: Gold flash selective gold(standard)
- 1: 5u" selective gold on contact
- 2: 10u" selective gold on contact
- 3: 15u" selective gold on contact
- 4: 30u" selective gold on contact
- 5: 50u" selective gold on contact
- 6: Gold flash full gold
- 7: Full tin
- 8: 2.5 μ inch min gold over 12 μ inch Pd-Ni
- 9: 2.5 μ inch min gold over 28 μ inch Pd-Ni

d. Shell plating :

- 0. Cr⁺³yellow chrome E. Nickel, UL logo
- 1. Nickel(standard) G. Front gold back Tin
- 2. Tin H: All Nickel
- 3. Cr⁺⁶yellow chrome i: front Ni, back tin, YS LOGO
- 4. Gold flash J: Special Ni, Back&front shell
- 5. Tin, not dimple
- 6. Cr⁺⁶yellow chrome, dimple
- 7. Tin tab shell dimple
- 8. Special tin, dimple
- 9. Cr yellow⁺³chrome, dimple
- A. Nickel, UL&CSA logo
- B. Nickel, prevent gander
- C. Nickel, with dimple
- D. Special, Fort Nickel back tin

e. Insulator Color

- 1: Blue 6: PC99 green
- 2: Black 7: PC99 yellow
- 3: White 8: Purple
- 4: Gray 9: Black(high temperature)
- 5: PC99 blue A: Black(Halogen-free)

f. Position of Clinch Nut :

0.03.05mm clear hole

- 1. Front rivet, 5.9mm
- 2. Rear rivet, 5.9mm
- 3. Rivet+2 prong boardlock 6.0*3.2mm
- A: Front rivet, 2.0mm
- B: Front rivet, 2.5mm
- C: Front rivet, 4.0mm
- D: Rear rivet, 2.0mm
- E: Rear rivet, 2.5mm
- F: Rear rivet, 4.0mm
- G: Front rivet, 5.0mm
- H: Rear rivet, 5.0mm

g. Flange Mounting Option :

0: 03.05mm clear hole

- 1: #4-40 threaded hole
- 2: #4-40 threaded hole with #4-40 unc(5*10mm)screwlock installed
- 3: #4-40 threaded hole with #4-40 unc(5*10mm)screwlock buld-packed
- 4: M3 threaded hole
- 5: #4-40 threaded hole with M3(5*10mm)screwlock installed
- 6: M2.6 threaded hole
- 7: #4-40 threaded hole with M2.6(5*10mm)screwlock installed
- 8: #4-40 insert(not through:4.75*7.50mm)
- A: #4-40 threaded hole with #4-40 unc(5.8*10.8mm)screwlock installed
- B: #4-40 threaded hole with M3(5.8*10.8mm)screwlock installed

h. Contact Type

- 1: Stamped Pin
- 2: Machined Pin
- 3: Stamped Pin, same height
- 4: Termianl same height, big edge cap same small edge cap sameness orientation

i. Ferrite :

- 0. Without ferrite
- 1. With ferrite


j. Insulator type

- N: Economical type

k. Pin Removal Options

- X: Pin #9 removed
- Y: Pin #4 and #9 removed
- Z: Pin #4, #9 and #11 removed
- B: Pin #17, #18, #38, #39 and #59 removed
- W: Pin #9, 12, 15 removed
- V: Pin #5, #9, #12, #15 removed
- U: Pin #5, 9 removed
- M: Pin #4, 5, 9 removed
- L: Pin #4 removed
- P: Pin #4, 11 removed
- O: Pin #3, 7, 11, 12, 17, 20, 21, 25 removed
- Q: Pin #10-18 removed
- R: Pin #4, 5, 9, 11, 12, 15 removed

DO NOT SCALE DRAWING

DIMENSIONS: <input type="checkbox"/> mm [INCH] <input type="checkbox"/> INCH [mm] <input checked="" type="checkbox"/> mm ONLY	CAD GENERATED DRAWING, DO NOT MANUALLY UPDATE DRAWN BY AND DATE JUSTIN XING 07-20-06	 Y-S ELECTRONIC CO., LTD. No. 101, Sec. 1, Long-An Street, Lu-Chu, Taoyuan, Taiwan, R.O.C. TEL: +886-3-3609819 FAX: +886-3-3609817
	UNLESS OTHERWISE SPECIFIED, GENERAL TOLERANCE: DECIMALS ANGLES X. ±0.38 [0.015] X* ±3° .X ±0.25 [0.010] .X* ±1.0° .XX ±0.13 [0.005]	
MATERIAL	SCALE: 1 : 1	SIZE: A3
FINISH	DRAWING NO. 104-XXXXXXXXXXXXX	
	FILE NO.:	SHEET 1 OF 1

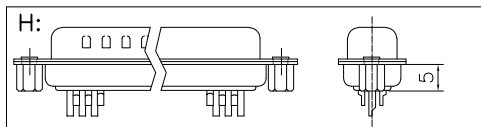
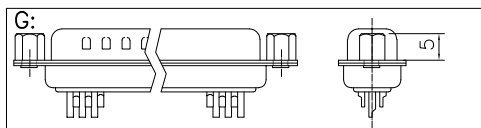
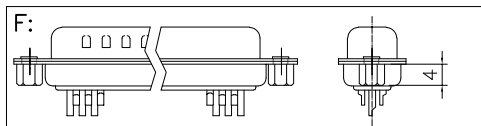
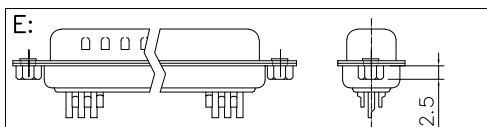
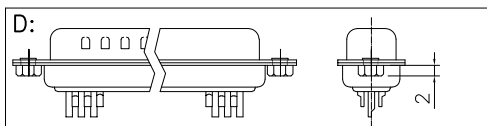
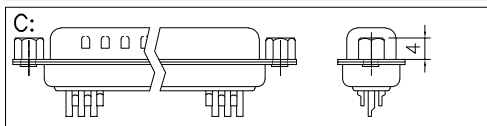
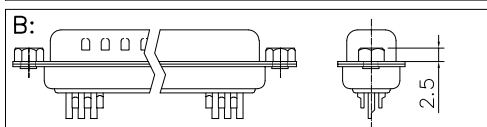
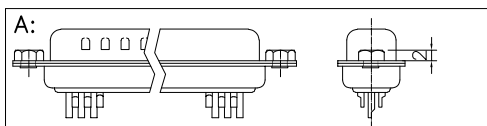
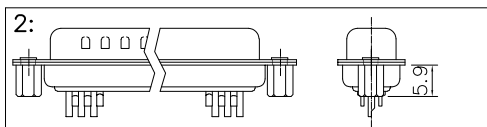
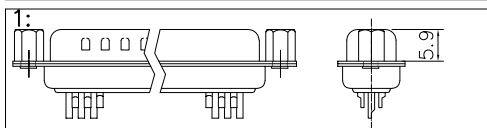
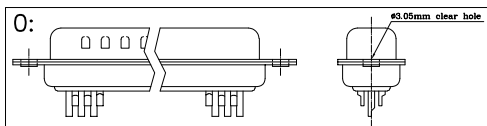
REV
A

THE INFORMATION CONTAINED IN THIS DOCUMENT IS PROPRIETARY TO Y-S ELECTRONIC, ANY REPRODUCTION IN PART OR WHOLE WITHOUT PRIOR WRITTEN APPROVAL OR AUTHORIZATION OF Y-S ELECTRONIC IS STRICTLY PROHIBITED.

RoHS COMPLIANT

REVISIONS				
REV	ECN NO.	DESCRIPTION	APPROVED BY	DATE
A				

f: Positon of Clinch Nut



CONSULT SALES OR
FACTORY FOR OTHER
MOUNTING STYLE OPTIONS

DO NOT SCALE DRAWING

DIMENSIONS: <input type="checkbox"/> mm [INCH] <input type="checkbox"/> INCH [mm] <input checked="" type="checkbox"/> mm ONLY		CAD GENERATED DRAWING, DO NOT MANUALLY UPDATE DRAWN BY AND DATE JUSTIN XING 10-20-05			
UNLESS OTHERWISE SPECIFIED, GENERAL TOLERANCE: DECIMALS ANGLES .X ±0.38 [0.015] X° ±3° .X ±0.25 [0.010] .X° ±1.0° .XX ±0.13 [0.005]		CHECKED BY AND DATE JUSTIN XING 10-20-05 APPROVED BY AND DATE KING CHIU 10-20-05		TITLE 104 SERIES D-SUB HD SOLDER TYPE	
MATERIAL		THIRD ANGLE PROJECTION 		DRAWING NO. 104-XXXXXXXXXXXXX	
FINISH		SCALE: 1 : 1 SIZE: A3		REV A	
FILE NO.:				SHEET 3 OF 3	