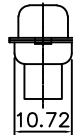
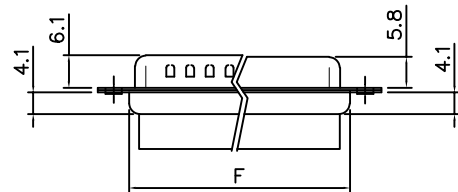
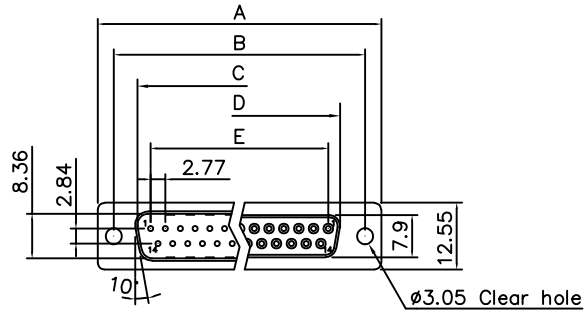


THE INFORMATION CONTAINED IN THIS DOCUMENT IS PROPRIETARY TO Y-S ELECTRONIC, ANY REPRODUCTION IN PART OR WHOLE WITHOUT PRIOR WRITTEN APPROVAL OR AUTHORIZATION OF Y-S ELECTRONIC IS STRICTLY PROHIBITED.

RoHS COMPLIANT

| REVISIONS |         |             |             |      |
|-----------|---------|-------------|-------------|------|
| REV       | ECN NO. | DESCRIPTION | APPROVED BY | DATE |
|           |         |             |             |      |



Dimensions

| Positions | A     | B     | C     | D     | E     | F     |
|-----------|-------|-------|-------|-------|-------|-------|
| 9         | 30.81 | 24.99 | 16.92 | 16.33 | 11.08 | 19.20 |
| 15        | 39.20 | 33.30 | 25.25 | 24.70 | 19.39 | 27.70 |
| 25        | 53.05 | 47.04 | 38.96 | 38.40 | 33.24 | 41.10 |
| 37        | 69.40 | 63.50 | 55.42 | 54.80 | 49.86 | 57.30 |

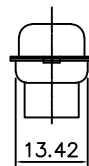
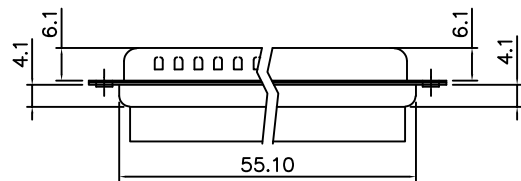
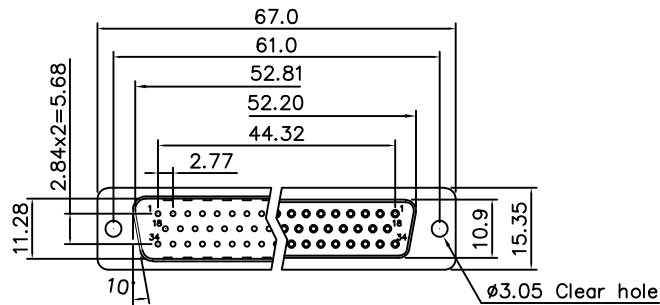
Product Specification

Material

Front Housing : Glass-Filled Thermoplastic PBT, UL94V-0  
 Back Housing : Glass-Filled Thermoplastic PA66, UL94V-0  
 Insulator Color : Black  
 Front shell : Steel, 60u" Nickel Over 50u" min Copper  
 Back shell : Steel, 100u" Tin Over 50u" min Copper  
 Clinch Nut : Brass, Nickel Plated.  
 Screwlock : Steel, Nickel Plated.

Electrical

Insulation Resistance : 1000  
 megohms at 500 VDC  
 Dielectric Withstanding Voltage :  
 1000 VAC/rms 60Hz for 1 minute  
 Operation Temperature : -25°C to +85°C



50 Positions

DO NOT SCALE DRAWING

|  |  |                                   |
|--|--|-----------------------------------|
| DIMENSIONS:<br><input type="checkbox"/> mm [INCH] <input type="checkbox"/> INCH [mm] <input checked="" type="checkbox"/> mm ONLY | CAD GENERATED DRAWING,<br>DO NOT MANUALLY UPDATE<br>DRAWN BY AND DATE<br>JUSTIN XING 10-20-05  |                                   |
|  | UNLESS OTHERWISE SPECIFIED,<br>GENERAL TOLERANCE:<br>DECIMALS      ANGLES<br>.X ±0.38 [0.015]    X° ±3°<br>.XX ±0.25 [0.010]    .X° ±1.0°<br>.XX ±0.13 [0.005] |                                   |
| MATERIAL   |  | DRAWING NO. 102-XXXXXX      REV B |
| FINISH   | SCALE: 1 : 1      SIZE: A3   | FILE NO.:      SHEET 1 OF 3       |

1 2 3 4 5 6 7 8

THE INFORMATION CONTAINED IN THIS DOCUMENT IS PROPRIETARY TO Y-S ELECTRONIC, ANY REPRODUCTION IN PART OR WHOLE WITHOUT PRIOR WRITTEN APPROVAL OR AUTHORIZATION OF Y-S ELECTRONIC IS STRICTLY PROHIBITED.

RoHS COMPLIANT

| REVISIONS |         |             |             |      |
|-----------|---------|-------------|-------------|------|
| REV       | ECN NO. | DESCRIPTION | APPROVED BY | DATE |
|           |         |             |             |      |

Ordering Information

102 -  $\frac{XX}{a} \frac{X}{b} \frac{X}{c} \frac{X}{d} \frac{X}{e}$

a. No. Of Pins

- 09: 09 positions
- 15: 15 positions
- 25: 25 positions
- 37: 37 positions
- 50: 50 positions

b. Contact Type:

- 1: Male
- 2: Female

c. Shell plating :

- 0. Cr<sup>+3</sup> yellow chrome
- 1. Nickel (standard)
- 2. Tin
- 3. Cr<sup>+6</sup> yellow chrome
- 4. Gold flash
- 5. Tin, not dimple
- 6. Cr<sup>+6</sup> yellow chrome, dimple
- 7. Tin tab shell, dimple
- 8. Special tin, dimple
- 9. Cr<sup>+3</sup> yellow chrome, dimple
- A. Tin tab shell, dimple; Copper alloy
- B. Nickel tab shell, dimple
- C. Special Nickel
- D. Special tin, UL logo
- E. Special Nickel, UL logo

d. Position of clinch nut


- 0.  $\phi$ 3.05mm clear hole
- 1. Front rivet, 5.9mm
- 2. Rear rivet, 5.9mm
- 3. Rivet boardlock
- 4. Rear rivet, 3.2mm

- A. Front rivet, 2.0mm
- B. Front rivet, 2.5mm
- C. Front rivet, 4.0mm
- D. Rear rivet, 2.0mm
- E. Rear rivet, 2.5mm
- F. Rear rivet, 4.0mm
- G. Rivet tab shell
- H. Rear rivet leister, 19.0mm

e. Flange Mounting Option

- 0.  $\phi$ 3.05mm clear hole
- 1. #4-40 threaded hole
- 2. #4-40 threaded hole with #4-40 unc(5\*10mm) screwlock installed
- 3. #4-40 threaded hole with #4-40 unc(5\*10mm) screwlock buld-packed
- 4. M3 threaded hole
- 5. #4-40 threaded hole with M3(5\*10mm) screwlock installed
- 6. M2.6 threaded hole
- 7. #4-40 threaded hole with M2.6(5\*10mm) screwlock installed
- 8. #4-40 threaded hole with #4-40 unc(5.8\*10.8mm) screwlock installed
- 9. #4-40 threaded hole with M3(5.8\*10.8mm) screwlock installed
- A. #4-40unc screwlock(4.75\*7.5mm, half hole)
- B. Straight rivet  $\phi$ 4.0mm

DO NOT SCALE DRAWING

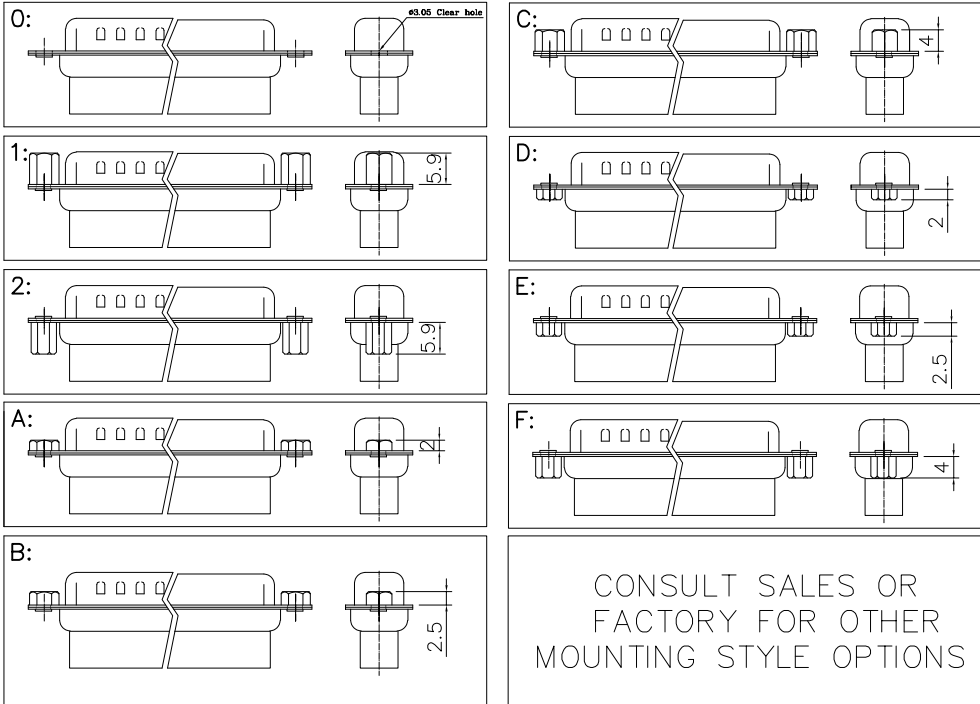
|  |   |   |
|--|---|---|
| DIMENSIONS:<br><input type="checkbox"/> mm [INCH] <input type="checkbox"/> INCH [mm] <input checked="" type="checkbox"/> mm ONLY | CAD GENERATED DRAWING,<br>DO NOT MANUALLY UPDATE<br>DRAWN BY AND DATE<br>JUSTIN XING 07-20-06   |  <b>Y-S ELECTRONIC CO., LTD.</b> |
|  | UNLESS OTHERWISE SPECIFIED,<br>GENERAL TOLERANCE:<br>DECIMALS      ANGLES<br>.X    +0.38 [0.015]    X*    +3°<br>.X    +0.25 [0.010]    .X*    +1.0°<br>.XX   +0.13 [0.005] |   |
| MATERIAL   | SCALE: 1:1  | SIZE: A3  |
| FINISH   | DRAWING NO. 102-XXXXXX  |   |
| FILE NO.:  |   | REV B   |
|  |   | SHEET 1 OF 1  |

1 THE INFORMATION CONTAINED IN THIS DOCUMENT IS PROPRIETARY TO Y-S ELECTRONIC, ANY REPRODUCTION IN PART OR WHOLE WITHOUT PRIOR WRITTEN APPROVAL OR AUTHORIZATION OF Y-S ELECTRONIC IS STRICTLY PROHIBITED.

2 **RoHS COMPLIANT**

| REVISIONS |         |             |             |      |
|-----------|---------|-------------|-------------|------|
| REV       | ECN NO. | DESCRIPTION | APPROVED BY | DATE |
| A         |         |             |             |      |

3 d: Position of Clinch Nut



DO NOT SCALE DRAWING

|   |   |  |
|---|---|--|
| DIMENSIONS:<br><input type="checkbox"/> mm [INCH] <input type="checkbox"/> INCH [mm] <input checked="" type="checkbox"/> mm ONLY  | CAD GENERATED DRAWING,<br>DO NOT MANUALLY UPDATE<br>DRAWN BY AND DATE<br>JUSTIN XING 10-20-05                       |  |
| UNLESS OTHERWISE SPECIFIED,<br>GENERAL TOLERANCE:<br>DECIMALS      ANGLES<br>.X   ±0.38 [0.015]    X°   ±3°<br>.X   ±0.25 [0.010]    .X°   ±1.0°<br>.XX   ±0.13 [0.005] | CHECKED BY AND DATE<br>JUSTIN XING 10-20-05<br>APPROVED BY AND DATE<br>KING CHIU 10-20-05<br>THIRD ANGLE PROJECTION |  |
| MATERIAL  |   | DRAWING NO. 102-XXXXXX      REV B                        |
| FINISH  |   | SCALE: 1 : 1      SIZE: A3<br>FILE NO.      SHEET 3 OF 3 |