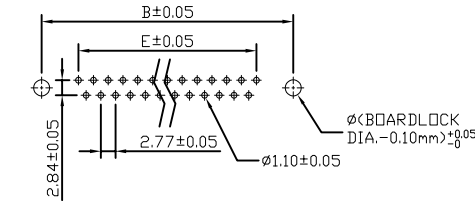
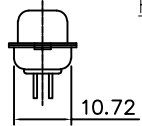
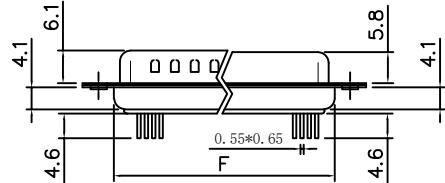
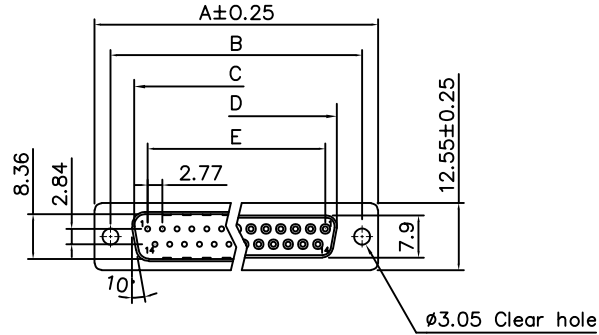


THE INFORMATION CONTAINED IN THIS DOCUMENT IS PROPRIETARY TO Y-S ELECTRONIC, ANY REPRODUCTION IN PART OR WHOLE WITHOUT PRIOR WRITTEN APPROVAL OR AUTHORIZATION OF Y-S ELECTRONIC IS STRICTLY PROHIBITED.

RoHS COMPLIANT

REVISIONS				
REV	ECN NO.	DESCRIPTION	APPROVED BY	DATE



RECOMMENDED PCB LAYOUT

Product Specification

Material

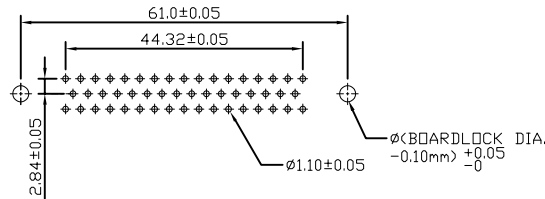
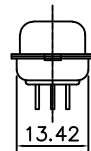
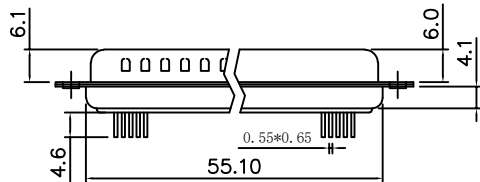
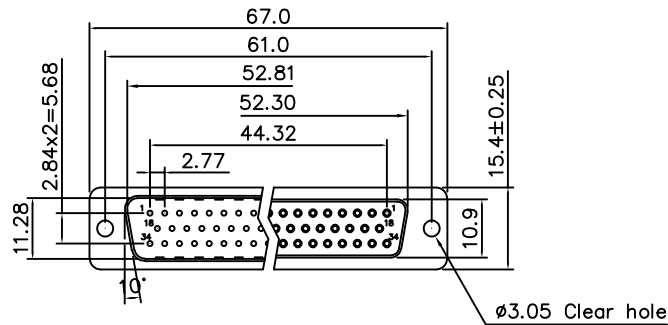
- Insulator : Glass-Filled Thermoplastic PBT, UL94V-0
- Contact : Brass
- Front shell : Steel, 60u" Nickel Over 50u" min Copper
- Back shell : Steel, 100u" Tin Over 50u" min Copper
- Clinch Nut : Brass, Nickel Plated
- Boardlock : Brass, Tin Plated
- Screwlock : Steel, Nickel Plated

Electrical

- Contact Resistance : 20 milliohms
- Insulation Resistance : 1000 megohms at 500 VDC
- Dielectric Withstanding Voltage : 1000 VAC/rms 60Hz for 1 minute
- Current Rating : 3 AMP
- Voltage Rating : 250 VAC/rms 60Hz
- Operation Temperature : -25°C to +85°C

DIMENSION TABLE

POSITIONS	A	B	C	D	E	F
9	30.81	24.99	16.92	16.33	11.08	19.20
15	39.20	33.32	25.35	24.66	19.39	27.70
25	53.04	47.04	38.96	38.30	33.24	41.10
37	69.40	63.50	55.42	54.84	49.86	57.30



RECOMMENDED PCB LAYOUT

50 POSITIONS

DO NOT SCALE DRAWING

DIMENSIONS: <input type="checkbox"/> mm [INCH] <input type="checkbox"/> INCH [mm] <input checked="" type="checkbox"/> mm ONLY	CAD GENERATED DRAWING, DO NOT MANUALLY UPDATE DRAWN BY AND DATE JUSTIN XING 11-21-05		
	UNLESS OTHERWISE SPECIFIED, GENERAL TOLERANCE: DECIMALS ANGLES .X ±0.38 [0.015] X° ±3° .XX ±0.25 [0.010] .X° ±1.0° .XX ±0.13 [0.005]		CHECKED BY AND DATE JUSTIN XING 11-21-05 APPROVED BY AND DATE KING CHIU 11-21-05
MATERIAL	THIRD ANGLE PROJECTION 	DRAWING NO. 101-XXXXXXXXXX	REV G
FINISH	SCALE: 1 : 1	SIZE: A3	FILE NO.: SHEET 1 OF 4

1 2 3 4 5 6 7 8

THE INFORMATION CONTAINED IN THIS DOCUMENT IS PROPRIETARY TO Y-S ELECTRONIC, ANY REPRODUCTION IN PART OR WHOLE WITHOUT PRIOR WRITTEN APPROVAL OR AUTHORIZATION OF Y-S ELECTRONIC IS STRICTLY PROHIBITED.

RoHS COMPLIANT

REVISIONS

REV	ECN NO.	DESCRIPTION	APPROVED BY	DATE

Ordering Information

101 - $\frac{XX}{a} \frac{X}{b} \frac{X}{c} \frac{X}{d} \frac{X}{e} \frac{X}{f} \frac{X}{g} \frac{X}{h} \frac{X}{i}$

a. No. Of Pins

- 09: 09 positions
- 15: 15 positions
- 25: 25 positions
- 37: 37 positions
- 50: 50 positions

b. Contact Type:

- 1: Male
- 2: Female

c. Contact Plating :

- 0. Gold flash selective gold(standard)
- 1. 5u" selective gold on contact
- 2. 10u" selective gold on contact
- 3. 15u" selective gold on contact
- 4. 30u" selective gold on contact
- 5. 50u" selective gold on contact
- 6. Gold flash full gold
- 7. 8u" gold flash full gold
- 8. Full tin
- 9. matte tin selective gold
- A. 30u" matte tin selective gold
- B. 15u" matte tin selective gold

d. Shell plating :

- 0. Cr⁺³ yellow chrome A. Matte tin
- 1. Nickel(standard) B. Tab shell matte tin ϕ 4.0
- 2. Tin C. Tin(With Y-S Logo)
- 3. Cr⁺⁶ yellow chrome
- 4. Gold flash
- 5. Tab shell dimple
- 6. Tab shell ϕ 4.0
- 7. Cr⁺⁶ yellow chrome, dimple
- 8. Thickness Assigned of tin, dimple
- 9. Cr⁺³ yellow chrome, dimple

e. Insulator Color :

- 1: Blue A: Black(high temperature)
- 2: Black(standard) B: Blue(high temperature)
- 3: White C: White(high temperature)
- 4: Gray
- 5: Pc99 blue
- 6: Tab insulator, black
- 7: Green
- 8: Pc99 green
- 9: Pc99 yellow
- 0: Pc99 purple

f. Position of Clinch Nut :

- 0: Clear hole ϕ 3.05mm**
- 1: Rivet front 5.9mm
- 2: Rear rivet, 5.9mm
- 3: Rivet+2 prong boardlock 6.0*3.2mm
- 4: Rivet front, Round 5.9mm
- 5: Rivet+4 prong boardlock 6.0*3.2mm
- 6: Boardlock 4.75*11.7mm, track hole section 1.0mm
- 7: Rivet+2 prong boardlock 5.2*3.2mm
- A: Front rivet, 2.0mm
- B: Front rivet, 2.5mm
- C: Front rivet, 4.0mm
- D: Rear rivet, 2.0mm
- E: Rear rivet, 2.5mm
- F: Rear rivet, 4.0mm
- G: Rivet+2 prong boardlock(6.0*3.0mm)
- H: Rivet+2 prong boardlock(6.0*3.3mm)
- I: Rivet+2 prong boardlock(7.3*3.2mm)
- J: Rear rivet, 3.5mm
- K: Rear rivet, 5.0mm
- L: Front rivet, 5.0mm
- M: Rivet+2 prong boardlock(5.0*3.2mm)
- N: Rear rivet, 11.7mm
- O: Boardlock 5.5mm
- P: Rivet+2 prong boardlock(6.0*3.0mm)
- Q: Rivet+2 prong round boardlock(6.0*3.0mm)
- R: Boardlock 7.1*3.2
- S: Round Boardlock 27.5mm
- T: Rear Rivet 6.2mm
- U: Boardlock 9.6* 3.2mm
- V: Boardlock 13.5*3.2mm, track hole section 1.0mm
- W: Boardlock 11.9*3.2mm, track hole section 1.0mm
- X: Boardlock 12.5*3.2mm, track hole section 1.0mm

g. Flange Mounting Option :

- 0: ϕ 3.05mm clear hole**
- 1: #4-40 threaded hole
- 2: #4-40 threaded hole with #4-40 unc(5*10mm) screwlock installed
- 3: #4-40 threaded hole with #4-40 unc(5*10mm) screwlock bulk-packed
- 4: M3 threaded hole
- 5: #4-40 threaded hole with M3(5*10mm) screwlock installed
- 6: M2.6 threaded hole
- 7: #4-40 threaded hole with M2.6(5*10mm) screwlock installed
- 8: #4-40 threaded(half hole)
- A: Bolt type screw lock
- B: #4-40 threaded hole with #4-40 unc(5.8*10.8mm) screwlock installed
- C: #4-40 threaded hole Standoff+2 prong boardlock screw: 6.0*3.2mm screwlock installed
- D: #4-40 threaded hole with M3(5.8*10.8mm) screwlock installed
- E: #4-40 threaded hole with #4-40 unc(5.8*10.8mm) screwlock bulk-packed
- F: #4-40 threaded hole with #4-40 unc(4.8*11.8mm) screwlock bulk-packed
- G: #4-40 threaded hole with M2.6(5.8*10.8mm) screwlock installed
- H: #4-40 threaded hole with round "-" font #4-40 unc(6.0*12.0mm) screwlock installed
- I: #4-40 threaded hole with #4-40 unc(4.8*10.0mm) screwlock installed
- J: #4-40 threaded hole with #4-40 unc(5.0*11.0mm) screwlock installed

h. Pin Type :

- 0. Stamped pin: 5.5mm
- 1. Stamped pin: 4.6mm
- 2. Machined pin: 5.0mm
- 3. Stamped contact: 4.6mm wanting 1pin
- 4. Stamped short pin: 3.2mm
- 5. Machined pin: 5.5mm
- 6. Machined pin: 6.2mm
- 7. Machined pin: 17.5mm
- 8. Stamped pin: 4.3mm
- 9. Machined pin: 13mm
- A. Machined pin: 7.4mm
- B. Machined pin: 9.52mm
- C. Machined pin: 12.6mm
- D. Stamped pin: 5.0mm
- E. Machined pin: 6.5mm



i. Ferrite :

- 0. Without ferrite
- 1. With ferrite

Lettering :

- Y: laser lettering
- K: kang tai lettering

DO NOT SCALE DRAWING

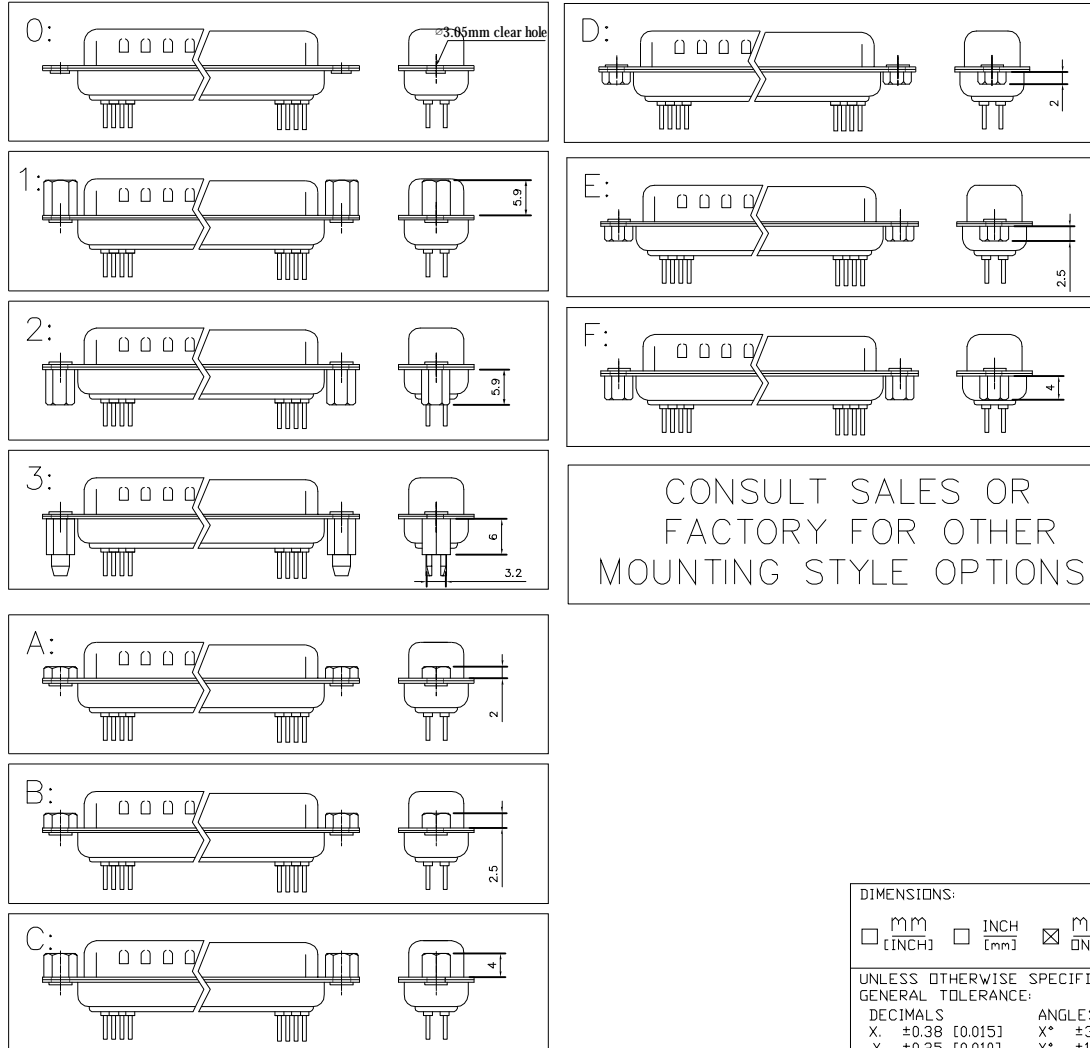
DIMENSIONS: <input type="checkbox"/> MM [INCH] <input type="checkbox"/> INCH [MM] <input checked="" type="checkbox"/> MM ONLY		CAD GENERATED DRAWING, DO NOT MANUALLY UPDATE DRAWN BY AND DATE JUSTIN XING 07-20-06		 Y-S ELECTRONIC CO., LTD. No. 101, Sec. 1, Long-An Street, Lu-Chu, Taoyuan, Taiwan, R.O.C. TEL: +886-3-3609819 FAX: +886-3-3609817
UNLESS OTHERWISE SPECIFIED, GENERAL TOLERANCE: DECIMALS ANGLES X. \pm 0.38 [0.015] X* \pm 3° .X \pm 0.25 [0.010] .X* \pm 1.0° .XX \pm 0.13 [0.005]		CHECKED BY AND DATE JUSTIN XING 07-20-06 APPROVED BY AND DATE KING CHIU 11-21-05 THIRD ANGLE PROJECTION		
MATERIAL				TITLE 101 SERIES D-SUB DIP STRAIGHT TYPE
FINISH		SCALE: 1 : 1 SIZE: A3		
DRAWING NO. 101-XXXXXXXXXX		REV G		SHEET 2 OF 3
FILE NO.:		SHEET 2 OF 3		

THE INFORMATION CONTAINED IN THIS DOCUMENT IS PROPRIETARY TO Y-S ELECTRONIC. ANY REPRODUCTION IN PART OR WHOLE WITHOUT PRIOR WRITTEN APPROVAL OR AUTHORIZATION OF Y-S ELECTRONIC IS STRICTLY PROHIBITED.

RoHS COMPLIANT


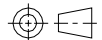
REVISIONS				
REV	ECN NO.	DESCRIPTION	APPROVED BY	DATE

f: Position of Clinch Nut



CONSULT SALES OR
FACTORY FOR OTHER
MOUNTING STYLE OPTIONS

DO NOT SCALE DRAWING

DIMENSIONS: <input type="checkbox"/> MM [INCH] <input type="checkbox"/> INCH [mm] <input checked="" type="checkbox"/> MM ONLY	CAD GENERATED DRAWING, DO NOT MANUALLY UPDATE DRAWN BY AND DATE JUSTIN XING 07-20-06		 Y-S ELECTRONIC CO., LTD. No. 101, Sec. 1, Long-An Street, Lu-Chu, Taoyuan, Taiwan, R.O.C. TEL: +886-3-3609819 FAX: +886-3-3609817	
	UNLESS OTHERWISE SPECIFIED, GENERAL TOLERANCE: DECIMALS ANGLES .X ±0.38 [0.015] X° ±3° .X ±0.25 [0.010] .X° ±10° .XX ±0.13 [0.005]			CHECKED BY AND DATE JUSTIN XING 07-20-06 APPROVED BY AND DATE KING CHIU 11-21-05 THIRD ANGLE PROJECTION
MATERIAL			DRAWING NO. 101-XXXXXXXXXX	REV G
FINISH	SCALE: 1 : 1	SIZE: A3	FILE NO.:	SHEET 3 OF 3