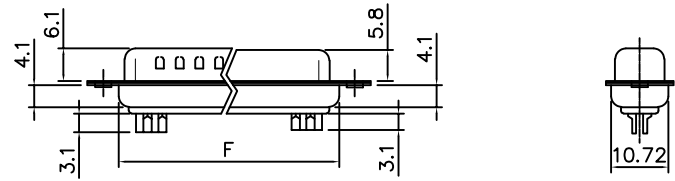
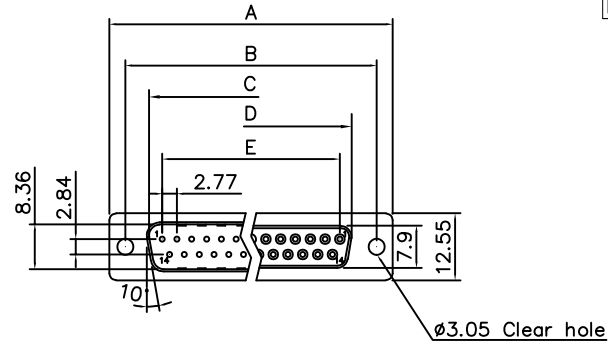


THE INFORMATION CONTAINED IN THIS DOCUMENT IS PROPRIETARY TO Y-S ELECTRONIC, ANY REPRODUCTION IN PART OR WHOLE WITHOUT PRIOR WRITTEN APPROVAL OR AUTHORIZATION OF Y-S ELECTRONIC IS STRICTLY PROHIBITED.

RoHS COMPLIANT

REVISIONS				
REV	ECN NO.	DESCRIPTION	APPROVED BY	DATE

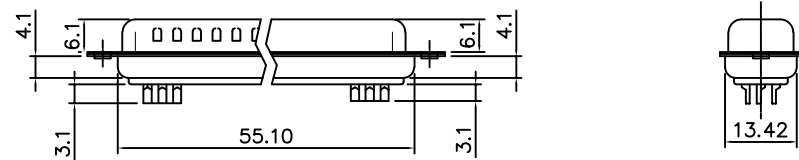
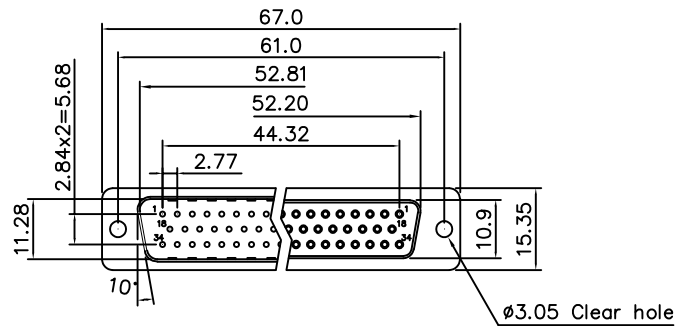


Dimensions

Positions	A	B	C	D	E	F
9	30.81	24.99	16.92	16.33	11.08	19.20
15	39.20	33.30	25.25	24.70	19.39	27.70
25	53.05	47.04	38.96	38.40	33.24	41.10
37	69.40	63.50	55.42	54.80	49.86	57.30

Product Specification
 Material
 Insulator : Glass-Filled Thermoplastic PBT,UL94V-0
 Contact : Brass
 Front shell : Steel, 60u" Nickel Over 50u" min Copper
 Back shell : Steel, 100u" Tin Over 50u" min Copper
 Clinch Nut : Brass, Nickel Plated
 Screwlock : Steel, Nickel Plated

Electrical
 Contact Resistance : 20 milliohms
 Insulation Resistance : 1000 mohms at 500 VDC
 Dielectric Withstanding Voltage : 1000 VAC/rms 60Hz for 1 minute
 Current Rating : 3 AMP
 Voltage Rating : 250 VAC/rms 60Hz
 Operation Temperature : -25°C to +85°C



50 Positions

DIMENSIONS: <input type="checkbox"/> mm [INCH] <input type="checkbox"/> INCH [mm] <input checked="" type="checkbox"/> mm ONLY	CAD GENERATED DRAWING, DO NOT MANUALLY UPDATE DRAWN BY AND DATE JUSTIN XING 11-21-05	
	UNLESS OTHERWISE SPECIFIED, GENERAL TOLERANCE: DECIMALS ANGLES .X ±0.38 [0.015] X° ±3° .XX ±0.25 [0.010] .X° ±1.0° .XX ±0.13 [0.005]	
MATERIAL FINISH	SCALE: 1 : 1 SIZE: A3	DRAWING NO. 100-XXXXXXXXXX REV I
FILE NO.:		SHEET 1 OF 3

DO NOT SCALE DRAWING

THE INFORMATION CONTAINED IN THIS DOCUMENT IS PROPRIETARY TO Y-S ELECTRONIC, ANY REPRODUCTION IN PART OR WHOLE WITHOUT PRIOR WRITTEN APPROVAL OR AUTHORIZATION OF Y-S ELECTRONIC IS STRICTLY PROHIBITED.

RoHS COMPLIANT

Ordering Information

100 - $\frac{XX}{a} \frac{X}{b} \frac{X}{c} \frac{X}{d} \frac{X}{e} \frac{X}{f} \frac{X}{g} \frac{X}{h} \frac{X}{i} \frac{X}{j} \frac{X}{k}$

REVISIONS				
REV	ECN NO.	DESCRIPTION	APPROVED BY	DATE

a.No.Of Pins

- 09: 09 positions
- 15: 15 positions
- 25: 25 positions
- 37: 37 positions
- 50: 50 positions

b.Contact Type:

- 1:Male 3:Male (phosphor bronze)
- 2:Female 4:Female (phosphor bronze)

c.Contact Plating :

- 0.Gold flash selective gold A.Gold flash full gold 50U"
- 1.5u"selective gold on contact B. 2.5 μ inch min gold over 12 μ inch Pd-Ni
- 2.10u"selective gold on contact C. 0.8u"selective gold on contact
- 3.15u"selective gold on contact D.Gold flash full gold 10U"
- 4.30u"selective gold on contact E.15u"selective gold on contact(Bright tin 150U")
- 5.50u"selective gold on contact F.5u"selective gold on contact(Bright tin 150U")
- 6.Gold flash full gold G.20u"selective gold on contact
- 7.Gold flash full gold 8U" H.3u"selective gold on contact
- 8. Tin Full I.Gold flash full gold 15U"
- 9.Gold flash full gold 30U"

d.Shell plating :

- 0. Cr⁺³yellow chrome E. All plastic
- 1.Nickel(standard) F. Tin , UL logo
- 2.Tin G. Nickel , No dimple
- 3.Cr⁺⁶yellow chrome H. Nickel , UL logo
- 4.Gold flash I. Special Nickel , UL logo
- 5.Tin, No dimple J. Special Nickel , Back&front shell
- 6.Cr⁺⁶yellow chrome,dimple K. Nickel , Y-S logo
- 7.Tin tab shell, dimple L. Special tin, dimple , UL logo
- 8.Special tin, dimple M. Nickel(stainless steel)
- 9. Cr⁺³yellow chrome, dimple O. No iron shell
- A. Nickel, UL&CSA logo
- B. Front Gold&Rear Tin
- C.Special,Fornt Nickel back tin,dimple
- D.Tin tab shell,UL&CSA logo

e.Insulator Color :

- 1:Blue A:Black halogen free
- 2:Black(standard) B.Especial color(PANTONE:322C)
- 3:White C.PC99 (purple)
- 4:Gray D.Black (The core hole is reduced)
- 5:Green E.Blue (The core hole is reduced)
- 6:Pc99 blue F.Black(LCP)
- 7.Pc99 green
- 8.Pc99 yellow
- 9:Black(high temperature)

f.Position of clinch nut(reffer ot page 3/4 for detail)

- 0.Ø3.05mm clear hole D.Front rivet,5.5mm(Round head embossing)
- 1.Front rivet, 5.9mm E.Front rivet,5.9mm(Round head embossing)
- 2.Rear rivet, 5.9mm
- 3.Rivet+2 prong boardlock6.0*3.2mm
- 4.Front rivet,2.0mm
- 5.Front rivet,2.5mm
- 6.Front rivet,4.0mm
- 7.Rear rivet, 2.0mm
- 8.Rear rivet, 2.5mm
- 9.Rear rivet, 4.0mm
- A.Front rivet,5.0mm
- B.Rear rivet,5.0mm
- C.Float rivet

g.Flange Mounting Option

- 0.Ø3.05mm clear hole
- 1. #4-40 threaded hole
- 2. #4-40 threaded hole with #4-40 unc(5*10mm)screwlock installed
- 3. #4-40 threaded hole with #4-40 unc(5*10mm)screwlock bulk-packed
- 4. M3 threaded hole
- 5. #4-40 threaded hole with M3(5*10mm)screwlock installed
- 6. M2.6 threaded hole
- 7. #4-40 threaded hole with M2.6(5*10mm)screwlock installed
- 8. #4-40unc serewlock(4.75*7.5mm, half hole)
- 9. #4-40 threaded hole with #4-40 unc(4.8*10.0mm)screwlock installed
- A. #4-40 threaded hole with #4-40 unc(5.8*10.8mm)screwlock installed
- B. #4-40 threaded hole with M3(5.8*10.8mm)screwlock installed
- C.#4-40 threaded hole with screw locking type with round #4-40 unc(6.1*11.94mm)
- D. #4-40 threaded hole with #4-40 unc(4.8*11.8mm)screwlock bulk-packed
- E. M2.6 serewlock(4.75*7.5mm, half hole)
- F. #2-56 serewlock(4.75*7.5mm, half hole)
- G. Ø3.05mm clear hole;with #4-40 unc(4.8*15.0mm)screwlock and 5.0mm nut
- H. #4-40 threaded hole with #4-40 unc(4.8*11.8mm)screwlock installed
- I. #4-40 threaded hole with #4-40 unc(4.8*11.8mm)screwlock installed(Hand lock screw)

h, Pin type

- 1. Stamped pin
- 2. Machined pin
- 3. Stamped pin+recessed 18-25pin
- 4. Machined pin+recessed
- 5. Stamped pin PIN+2~8,20~22pin **No Short ,Ather short.**
- 6. Stamped pin+1~8,20~22pin **No Short,Ather short.**
- 7. Stamped pin+2~8,20~22pin **No Short,Ather Short.**
- 8. Machined pin(exposure:3.5mm)
- 9. Machined pin#7#20 the rest Stamped pin
- A. Machined pin(waterproof glue)

i.Ferrite :

- 0.Without ferrite
- 1.With ferrite


j. Insulator type

- N:Economical type

k.Pin Removal Options

- X: Pin #9 removed
- Y: Pin #4 and #9 removed
- Z: Pin #4, #9 and #11 removed
- B: Pin #17, #18, #38, #39 and #59 removed
- V: Pin #1removed
- U: Pin #1,#4~#6,#9~#19,#21~#25removed
- F: Pin #6 removed
- E: Pin #1.6.7.8.9 removed
- G: Pin #6.7.8.9 removed
- C: Pin #1.9 removed
- H: Pin #24.25 removed

DO NOT SCALE DRAWING

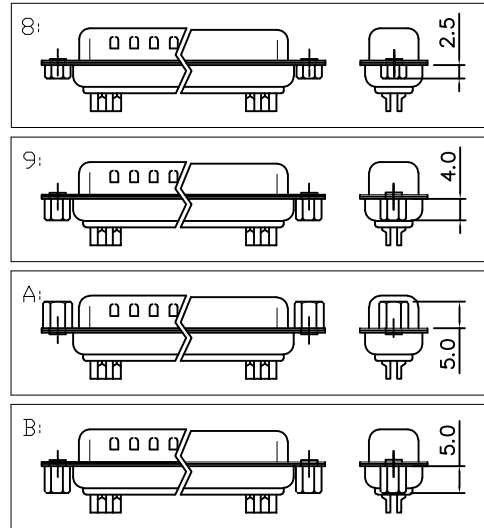
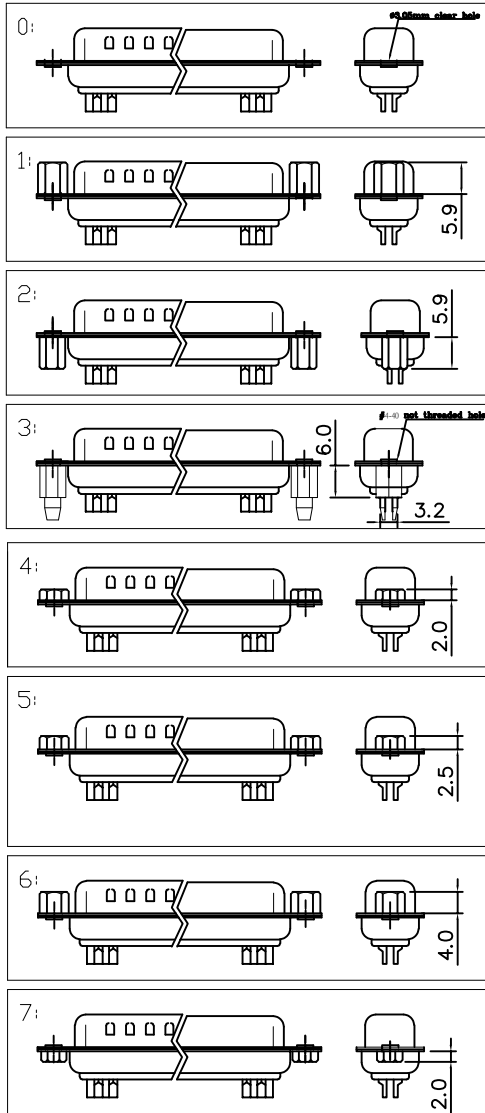
DIMENSIONS: <input type="checkbox"/> mm [INCH] <input type="checkbox"/> INCH [mm] <input checked="" type="checkbox"/> mm ONLY	CAD GENERATED DRAWING, DO NOT MANUALLY UPDATE DRAWN BY AND DATE JUSTIN XING 11-21-05	 Y-S ELECTRONIC CO., LTD.	
	UNLESS OTHERWISE SPECIFIED, GENERAL TOLERANCE: DECIMALS ANGLES X. ±0.38 [0.015] X° ±3* .X ±0.25 [0.010] .X° ±1.0* .XX ±0.13 [0.005]		CHECKED BY AND DATE JUSTIN XING 11-21-05 APPROVED BY AND DATE KING CHIU 11-21-05
MATERIAL	THIRD ANGLE PROJECTION	DRAWING NO.	REV
FINISH	SCALE: 1 : 1	100-XXXXXXXXXX	I
	SIZE: A3	FILE NO.:	SHEET 1 OF 1

1 THE INFORMATION CONTAINED IN THIS DOCUMENT IS PROPRIETARY TO Y-S ELECTRONIC, ANY REPRODUCTION IN PART OR WHOLE WITHOUT PRIOR WRITTEN APPROVAL OR AUTHORIZATION OF Y-S ELECTRONIC IS STRICTLY PROHIBITED.

2 RoHS COMPLIANT

REVISIONS				
REV	ECN NO.	DESCRIPTION	APPROVED BY	DATE

3 f:Position of Clinch Nut



CONSULT SALES OR FACTORY FOR OTHER MOUNTING STYLE OPTIONS

DO NOT SCALE DRAWING

DIMENSIONS: <input type="checkbox"/> mm [INCH] <input type="checkbox"/> INCH [mm] <input checked="" type="checkbox"/> mm ONLY	CAD GENERATED DRAWING, DO NOT MANUALLY UPDATE DRAWN BY AND DATE JUSTIN XING 11-21-05			
	UNLESS OTHERWISE SPECIFIED, GENERAL TOLERANCE: DECIMALS ANGLES .X ±0.38 [0.015] X° ±3° .X ±0.25 [0.010] .X° ±1.0° .XX ±0.13 [0.005]		CHECKED BY AND DATE JUSTIN XING 11-21-05 APPROVED BY AND DATE KING CHIU 11-21-05 THIRD ANGLE PROJECTION 	TITLE 100 SERIES D-SUB SOLDER TYPE
MATERIAL FINISH	SCALE: 1 : 1	SIZE: A3	DRAWING NO. 100-XXXXXXXXXX	REV I
FILE NO.:		SHEET 3 OF 3		